



# Grays Harbor College

## *Community Resource*

### *Directory*

## Grays Harbor College

1620 Edward P Smith Dr  
Aberdeen, WA 98520  
(360) 532-9020



*Publication Information:*  
*Compiled by*  
*Brandy Foreman*  
*GHC BAST Program Student Support Specialist*  
*WACC-AmeriCorps*  
*2021-2023*  
*Last Revision Date: 4/18/2023*

Grays Harbor college is an equal opportunity institution. For more info, see [ghc.edu/pubinfo](http://ghc.edu/pubinfo).

Note: If you would like to add or need to correct information that is found in the resource directory please email [Brandy.foreman@ghc.edu](mailto:Brandy.foreman@ghc.edu)

# Emergency Contact Numbers

**Arson Hotline** (800) 552-7766

**Child Protective Services (CPS)** (866) ENDHARM (866) 363-4276

**Coast Guard (Search & Rescue)** Westport (360) 268-0121

**Crisis Line (Grays Harbor)** (360) 532-4357 or (800) 685-6556

**EMERGENCY ONLY (Fire, Police, Sheriff)** 911

**Forest Fire Reports** (800) 562-6010

**Grays Harbor Community Hospital** (360) 532-8330

**Information About Services** 211

**Summit Pacific Medical Center (Elma)** (360) 346-2222

**Washington Poison Center** (800) 222-1222

**Washington State Patrol** (360) 533-5707

**On Grays Harbor College Campus Security (Non-Emergency)** (360) 538-4120

## **Police Department – Non-Emergency Numbers**

**Aberdeen** (360) 533-3180

**Cosmopolis** (360) 532-9237

**Elma** (360) 428-3131

**Hoquiam** (360) 532-0892

**All other areas of Grays Harbor County – Non- Emergency Police, Fire, Sherriff 24-hour Dispatch** (360) 533-8765

## Contents

Emergency Contact Numbers .....	3
Agencies .....	11
<b>The Arc of Grays Harbor</b> .....	12
<b>Coastal Community Action Program</b> .....	13
<b>Health &amp; Nutrition</b> .....	13
<b>Housing &amp; Energy Services</b> .....	13
<b>Home-Care Services</b> .....	13
<b>WorkFirst Services:</b> .....	13
<b>Transportation:</b> .....	13
<b>Coastal Harvest Food Bank</b> .....	14
<b>Food Banks</b> .....	14
<b>Feeding Programs</b> .....	16
<b>Senior Centers</b> .....	17
<b>Department of Social &amp; Health Services</b> .....	18
<b>Supplemental Nutrition Assistance Program (SNAP)/Food Stamps</b> .....	18
<b>Temporary Assistance for Needy Families (TANF)</b> .....	18
<b>Aged, Blind &amp; Disabled (ABD):</b> .....	18
<b>Diversion Cash Assistance:</b> .....	18
<b>Developmental Disabilities Administration</b> .....	19
<b>Washington Telephone Assist Program</b> .....	19
<b>Additional Requirements for Emergent Needs (AREN) Program</b> .....	19
<b>Tangible Goods</b> .....	19
<b>Childcare Subsidies</b> .....	19
<b>Veterans Integration Program</b> .....	19
<b>Grays Harbor College</b> .....	20
<b>Academic Transfer Degree:</b> .....	20
<b>Continuing Education:</b> .....	20
<b>Degree Options</b> .....	20
<b>Student Resources</b> .....	21
<b>Student Assistance Team (STAT)</b> .....	26
<b>Veteran Resources</b> .....	27
<b>Workforce Funding Programs</b> .....	29
<b>Grays Harbor College Foundation</b> .....	31
<b>GHC Foundation - Student Resources</b> .....	32

<b>Grays Harbor County</b> .....	33
<b>Department of Emergency Management (DEM)</b> .....	33
Emergency Operations Center.....	33
Types of Evacuation.....	34
How to “Shelter-in-Place” .....	34
Tsunami Dangers .....	37
Regional Tsunami Evacuation Maps.....	39
Quinault Indian Nation Emergency Management .....	43
<b>Grays Harbor County Public Health &amp; Human Services</b> .....	47
Women, Infants, & Children (WIC): .....	47
Maternal Support Services (MSS):.....	47
Family Planning .....	47
Immunizations: .....	47
Vital Records.....	47
Children with Special Healthcare Needs (CWSHN) Program .....	47
Access to Baby and Child Dentistry (ABCD).....	47
Parenting Classes .....	47
Mental Health Promotion Programs .....	47
Adventure Day & Substance Abuse Prevention Programming.....	47
<b>Harbor Connections</b> .....	48
Our Children’s Advocacy Center (CAC).....	48
Family Time (FT).....	48
Parent Education (PE).....	48
The Parent-Child Assistance Program (PCAP).....	48
<b>Olympic Area Agency on Aging</b> .....	49
Information & Assistance/Referral Services.....	49
Family Caregiver Support Program and Relatives as Parents.....	49
Medicaid In-Home Care.....	49
Washington Health Benefits Exchange and Statewide Health Insurance Benefits Advisors .....	49
(SHIBA).....	49
<b>Women Infant &amp; Children</b> .....	50
WIC Office Locations.....	50
<b>YMCA of Grays Harbor</b> .....	51
<b>City/ Community Information</b> .....	52
Aberdeen .....	53

<b>Amanda Park &amp; North County Communities</b> .....	57
<b>Cosmopolis &amp; South County Communities</b> .....	60
<b>Elma &amp; East County Communities</b> .....	62
<b>Hoquiam</b> .....	66
<b>Montesano &amp; Surrounding Communities</b> .....	69
<b>Ocean Shores &amp; North Beach Communities</b> .....	72
<b>Westport &amp; South Beach Communities</b> .....	79
<b>Services and Resources</b> .....	82
<b>Addiction Services</b> .....	83
<b>Alano Club (Alcoholics Anonymous)</b> .....	83
<b>Behavioral Health Resources -Adult and Children's Services</b> .....	83
<b>Blue River Recovery</b> .....	83
<b>Crisis Clinic of Grays Harbor</b> .....	83
<b>Eugenia Center</b> .....	84
<b>Grays Harbor Comprehensive Treatment Center</b> .....	84
<b>Lifeline Connections</b> .....	84
<b>Narcotics Anonymous</b> .....	85
<b>Northwest Indian Treatment Center</b> .....	85
<b>Quinault Substance Abuse</b> .....	85
<b>Social Treatment Opportunity Programs (STOP)</b> .....	85
<b>Sunrise Counseling</b> .....	86
<b>Trinity Behavioral Health</b> .....	86
<b>Animal Services &amp; Rescue</b> .....	87
<b>PAWS of Grays Harbor</b> .....	87
<b>Grays Harbor County Animal Control</b> .....	87
<b>East County TNR (Trap-Neuter-Return)</b> .....	87
<b>Childhood &amp; Youth Services</b> .....	88
<b>ABCD (Access to Baby &amp; Child Dentistry</b> .....	88
<b>Adoption Counseling &amp; Referral for all Children</b> .....	88
<b>Answers for Special Kids (ASK)</b> .....	88
<b>Child Care Action Council</b> .....	88
<b>Child Care Connections</b> .....	88
<b>Child Care Aware</b> .....	88
<b>Child Find of America</b> .....	88
<b>Child Help USA</b> .....	88

<b>Connections: A Center for Healthy Families</b> .....	88
<b>Children’s Resource Line</b> .....	89
<b>Children with Special Health Care Needs</b> .....	89
<b>Early Support for Infants &amp; toddlers</b> .....	89
<b>ESD 113 GH Youth Programs</b> .....	89
<b>GH Youth Center</b> .....	89
<b>GRAVITY Learning Center</b> .....	89
<b>Grays Harbor Child Advocates</b> .....	89
<b>Harbor Connections</b> .....	89
<b>Heart and Hands</b> .....	90
<b>Hopkins Early Learning Center</b> .....	90
<b>Kinship Care Support &amp; Resources</b> .....	90
<b>Migrant Program (Aberdeen School Dist)</b> .....	90
<b>National Runaway Safe line</b> .....	90
<b>Parent to Parent @ the ARC of Grays Harbor</b> .....	90
<b>PAVE (Partnership for Action, Voice for Empowerment)</b> .....	90
<b>Sound to Harbor Early Learning Programs</b> .....	90
<b>Women Infant &amp; Children (WIC) Office Locations</b> .....	91
<b>Working Connections Child Care</b> .....	91
<b>YMCA of Grays Harbor</b> .....	91
<b>Youth at Risk</b> .....	91
<b>Disability Services</b> .....	92
<b>Adult Protective Services</b> .....	92
<b>The Arc of Grays Harbor</b> .....	92
<b>Center for Children with Special Needs</b> .....	92
<b>Basics NW (Behavioral and Social Intervention &amp; Consultation Services Northwest)</b> .....	92
<b>Children with Special Healthcare Needs (CWSHN)</b> .....	92
<b>Harbor Alternative Living Association (HALA)</b> .....	92
<b>Morningside</b> .....	93
<b>Washington PAVE</b> .....	93
<b>Education</b> .....	94
<b>Co-Op Preschools</b> .....	94
<b>Evergreen State College</b> .....	94
<b>Grays Harbor College</b> .....	94
<b>National Center for Homeless Education at SERVE</b> .....	94

Sound to Harbor Head Start/ECEAP .....	95
South Puget Sound Community College .....	95
St Martin’s University .....	95
Superintendent of Public Instruction .....	95
US Department of Education .....	96
Washington Higher Education Coordinating Board.....	96
Other Alternative Education.....	96
<b>SPECIAL EDUCATION.....</b>	<b>97</b>
School Districts in Grays Harbor County, Washington.....	98
<b>Employment.....</b>	<b>103</b>
Coastal Supported Employment.....	103
Express Employment Professionals.....	103
Work First (through GH College) .....	103
Work Source Grays Harbor.....	103
Washington Initiative for Supported Employment.....	103
<b>Family Services.....</b>	<b>104</b>
Families in Transition (FIT).....	104
Father’s Network .....	104
Family Planning (GH Health Dept).....	104
Grays Harbor Housing Authority .....	104
NeighborWorks of Grays Harbor.....	104
Parents as Teachers Program .....	104
STOMP/PAVE .....	104
Turning Pointe Domestic Violence Services.....	105
PCAP-Parent Child Assistance Program .....	105
<b>Fire Stations.....</b>	<b>106</b>
<b>Food &amp; Clothing Banks .....</b>	<b>108</b>
<b>Government Officials and Programs .....</b>	<b>110</b>
Elected Officials .....	110
<b>STATE OF WASHINGTON TOLL FREE HOTLINE NUMBERS.....</b>	<b>112</b>
<b>Healthcare.....</b>	<b>115</b>
Addiction services .....	115
AIDS/STD Information .....	119
Dental Services .....	119
Disability Services .....	119



<b>Hearing</b> .....	120
<b>Hospitals</b> .....	121
<b>Mental Health, Counseling, Support &amp; Treatment Programs</b> .....	122
<b>Recovery Programs</b> .....	125
<b>Housing</b> .....	126
<b>Aberdeen Neighborhood Housing Services</b> .....	126
<b>Alive Shelter</b> .....	126
<b>Grays Harbor Housing Authority</b> .....	126
<b>Harbor Alternative Living Association</b> .....	126
<b>Making Home Affordable</b> .....	126
<b>NeighborWorks of Grays Harbor</b> .....	126
<b>Quinault Housing Authority</b> .....	126
<b>Legal Aid/Crisis</b> .....	127
<b>Libraries</b> .....	128
<b>Police Departments</b> .....	129
<b>Post Office</b> .....	130
<b>Senior Care and Services</b> .....	131
<b>Adult Protective Services</b> .....	131
<b>Catholic Community Services of Western Washington</b> .....	131
<b>Senior Centers</b> .....	131
<b>Transportation</b> .....	132
<b>Coastal Community Action Program (CCAP)</b> .....	132
<b>Grays Harbor Transit</b> .....	133
<b>Sky Harbor Shuttle</b> .....	134
<b>Tribal Resources</b> .....	135
<b>Clinics and Treatment Centers</b> .....	135
<b>Housing Authority</b> .....	135
<b>Tribal Services &amp; Contact Information</b> .....	135
<b>Food Banks</b> .....	137
<b>WIC Offices</b> .....	137
<b>Veterans Services</b> .....	142
<b>Veterans Advisory Board</b> .....	142
<b>Veterans of Foreign Wars (VFW)</b> .....	142
<b>Veterans' Relief Fund</b> .....	143
<b>Veteran Resources</b> .....	144

<b>On-Campus Resources</b> .....	144
<b>Local Off-Campus Resources</b> .....	144
<b>Telephone Numbers Specific to Military Veterans</b> .....	145
<b>Vietnam Veterans of America</b> .....	146
<b>Youth &amp; Family Recreation Opportunities</b> .....	147
<b>Arts</b> .....	147
<b>Camps</b> .....	147
<b>Clubs</b> .....	147
<b>Museums</b> .....	147
<b>Sports/ Outdoors</b> .....	147
<b>Theater/Acting</b> .....	147
<b>Parks and Recreation</b> .....	148

---

# Agencies

# The Arc of Grays Harbor

## **The Arc of Grays Harbor**

PO Box 1794  
523 West 1<sup>st</sup> St  
Aberdeen, WA 98520  
(360) 537-7000

[Arcgh.org](http://Arcgh.org)

The Arc of Grays Harbor is a non-profit organization that advocates for and supports a better quality of life for people with intellectual and developmental disabilities

Services offered:

### **Community Engagement**

The Arc of Grays Harbor provides Community Engagement services for clients receiving DDA services. These services allow people with disabilities the ability to access their community with the supports they need. Participants engage in a variety of community-based opportunities to grow their social network and knowledge.

### **Help Applying for DDA Services**

The Arc of Grays Harbor staff can help you apply for benefits from the Developmental Disabilities Administration.

### **Help Applying for SSI Services**

The Arc of Grays Harbor staff can help you apply for benefits from the Social Security Administration.

### **Community Liaison**

We inform individuals with disabilities, families, school staff, and interested parties of the resources available at IEP or 504 planning meetings. We assist people in taking the necessary steps to prepare for life after school through our Informational Workshops, Community information and Liaisons Services, Presentations; “Life after High School!” and other Informational presentations.

### **Information and Referrals**

The Arc of Grays Harbor can provide you with information about local resources and referrals to services in the community.

### **Advocacy**

The Arc was built as a grassroots organization around kitchen tables, as individuals with disabilities and their families organized and fought for their rights and full inclusion in the community. Today, advocates across the country continue to advocate and share stories about what it means to live every day with a disability and what is possible with proper supports and services. Their stories and activism transform legislation and numbers into real-life impact. Through them, the mission of The Arc comes to life and demonstrates the importance of building a future that includes us all.

# Coastal Community Action Program

Coastal Community Action Program (CCAP)  
 101 E Market St  
 Aberdeen, WA 98520  
 (360) 533-5100  
[www.coastalcap.org](http://www.coastalcap.org)

## Health & Nutrition

**Senior Nutrition Program/Meals on Wheels:** Food is served at five senior centers, five days a week from 11:30 am to 1:00 pm. Frozen meals are delivered to clients that are homebound or outside the city limits. A donation of \$3.50 (or \$8 for those under age 60) is suggested. Senior citizens countywide are eligible.

**HIV Case Management & Services:** Offers support and case management services to persons living with HIV/AIDS. These services are provided free of charge in cooperation with the Washington Department of Health.

**Emergency Food Assistance Program (EFAP) and Commodities Supplemental Food Program (CSFP):** In collaboration with Coastal Harvest, CCAP assists food banks and supplies food to households in need.

## Housing & Energy Services

**Emergency Food & Shelter Program (EFSP):** Rental assistance for eviction prevention.

**Home Weatherization Assistance Program:** Assists low-income community with making homes more heat efficient.

**Homeless Assistance:** Provides a variety of programs in individuals experiencing homelessness.

**Rental Assistance:** Assists eligible families with one month rent to help avoid eviction.

**Low-Income Home Energy Assistance Program (LIHEAP):** Assists with home energy costs county-wide for those who meet income requirements.

## Home-Care Services

**In-Home Care:** In-home caregivers offer nonmedical services to seniors, disabled, those recovering from surgery, and others in need of assistance in the safety of their own home.

**Philips Lifeline:** Lifeline Medical Alert Service

## Employment Support and Volunteer Services

**Supported Employment and DVR Services:** Facilitates competitive jobs in integrated work settings for individuals with mild to severe disabilities for whom employment has been difficult, or who need ongoing support services in order to perform their jobs.

### WorkFirst Services:

**Temporary Assistance for Needy Families (TANF):** A temporary cash assistance program to help low-income families stabilize their lives.

**Retired and Senior Volunteer Program (RSVP):** Enlists residents over the age of 55 to assist non-profit agencies with day-to-day operations, projects, and events.

### Transportation:

**Employment Transportation/Job Access & Remote Commute (JARC) Program**

### Medical Transportation Community Services:

**Personal Hygiene Packs:** Provide low-income individuals and families with basic hygiene items such as soap, toothpaste, laundry soap, toothbrushes, deodorant, shampoo, etc.

**Representative Payee Program:** Provides low-income individuals with rides to work or training.

**United Way Emergency Fund:** Funds may be available for dental, prescriptions, water bills, and some miscellaneous services.

# Coastal Harvest Food Bank

Business Office (NO FOOD DISTRIBUTION AT THIS LOCATION)

520 Tyler St  
Hoquiam, WA 98550  
(360) 532-6315

Coastal Harvest provides a number of critical services that simply are not attainable by small, local food pantries alone. These include purchasing power, transportation, food storage and collaboration with government and private entities. We increase the ability of these food pantries and feeding programs to serve their communities by efficiently managing the flow of food from suppliers to the consumer. A vital link in the assault on hunger, Coastal Harvest is a major component in the food distribution network in Grays Harbor, Pacific, Lewis, Thurston, Mason, Jefferson and Wahkiakum counties in Washington State. It is a leader in promoting cooperation and collaboration in service to its customers and community.

## Food Banks

<p><b>Aberdeen Baptist Church Food Bank</b> 2733 Aberdeen Ave Aberdeen, WA 98520 (360) 533-1572 <i>1st and 3rd Saturday 11:00am – 1:00pm</i></p>	<p><b>Copalis Church Community Food Bank</b> 3137 State Route 109 Copalis Beach, WA 98535 (360) 289-2233 <i>Wednesday 1:30pm – 5:30pm</i></p>
<p><b>Aberdeen Food Bank</b> 2120 Commerce St. Aberdeen, WA 98520 Off Wooding, across from Home Depot <a href="https://www.facebook.com/aberdeefoodbank/">facebook.com/aberdeefoodbank/</a> <i>Tuesday 3:00pm – 5:00pm</i></p>	<p><b>East County Food Bank</b> 106 W. Main Street Elma, WA 98541 (360) 482-4728 <i>Monday 1:00pm – 4:00pm</i></p>
<p><b>B.A.S.H. (Biker's Against Statewide Hunger)</b> 427 W. Main Street Elma, WA 98541 (360) 861-8062 <a href="http://www.SetFreeElma.org">www.SetFreeElma.org</a> <i>Monday, Wednesday, and Friday 3:00pm – 5:00pm</i></p>	<p><b>Foursquare Church – The Lord's Pantry</b> 4800 Central Park Drive Aberdeen, WA 98520 (360) 538-0111 <i>2nd and 4th Thursday 10:00am – 12:00pm</i></p>
<p><b>Bay Center Food Bank</b> 2 Main Street E. Bay Center, WA 98527 <i>2nd and last Friday 4:30pm – 5:30pm</i></p>	<p><b>Harbor Landing</b> Grays Harbor College 500 building (gym) 1620 Edward P. Smith Drive Aberdeen, WA 98520 (360) 538-4243 <a href="https://www.ghc.edu/studentlife/harbor-landing-food-pantry">https://www.ghc.edu/studentlife/harbor-landing-food-pantry</a> <i>Tuesday 10:00am – 2:00pm / Days/hours may vary during college breaks</i></p>
<p><b>Hoquiam Food &amp; Clothing Bank</b> 720 K Street Hoquiam, WA 98550 (360) 533-4909 <i>Monday and Wednesday 12:00pm – 2:00pm</i></p>	<p><b>Seventh-day Adventist Church Food Bank</b> 3101 Cherry Street Hoquiam, WA 98550 (360) 537-9133 <i>Thursday 10:00am – 2:00pm</i></p>

<p><b>Humptulips Food Bank</b>  32 Mcaffee Road  Humptulips, WA 98552  (360) 987-2361  <i>3rd Wednesday 12:00pm – 3:00pm</i></p>	<p><b>South Beach Food Bank</b>  314 N. Broadway  Westport, WA 98595  <i>2nd and 4th Thursday 9:00am – 11:00am</i></p>
<p><b>Malone Food Bank</b>  25 Mox Chehalis Road  Malone, WA 98559  (360) 482-2329  <i>2nd and last Wednesday 7:00am – 9:00am</i></p>	<p><b>South Beach Christian Outreach</b>  Meal Program, Food and Clothing Bank  617 S Forrest St.  Westport, WA 98595  (360) 268-1455  <i>Tuesday 12:00pm – 2:00pm</i></p>
<p><b>McCleary Food Bank</b>  100 3rd South Street  McCleary, WA 98557  <i>2nd and 4th Monday 8:30-11:00am</i></p>	<p><b>Taholah – Mobile Food Bank</b>  409 Cummex St (Senior Center)  Taholah, WA 98587  (360) 532-6315  <i>3rd Tuesday 12:00pm – 2:00pm</i></p>
<p><b>Montesano Food Bank</b>  213 W. Spruce Street  Montesano, WA 98563  (360) 249-5374  <i>First four Fridays of the month 1:00pm – 3:00pm</i></p>	
<p><b>Ocean Shores Food Bank</b>  846 Anchor Ave. NW  Ocean Shores, WA 98569  (360) 289-2171  <i>1st and 3rd Thursday 10:00am – 5:00pm</i></p>	
<p><b>Pacific Beach – Mobile Food Bank</b>  4576 WA-109 (Fire Station)  Pacific Beach, WA 98571  (360) 532-6315  <i>3rd Tuesday 9:00am – 11:00am</i></p>	
<p><b>Quinault Food Bank</b>  31 Burn Road  Neilton, WA 98566  <i>1st and 3rd Tuesday 1:00-4:00pm</i></p>	

## Feeding Programs

### **B.A.S.H./Set Free**

427 W. Main Street

Elma, WA 98541

(360) 861-8062

[www.SetFreeElma.org](http://www.SetFreeElma.org)

*Monday – Friday*

*Breakfast: 6:00am – 6:25am*

*Lunch: 11:30am – 12:15pm*

*Dinner: 4:30pm – 5:15pm*

*Saturday*

*Breakfast: 6:00am – 8:25am*

*Lunch: 11:30am – 12:15 pm*

*Dinner: 4:30pm – 5:15 pm*

*Sunday*

*Breakfast: 6:00am – 9:00am*

*Lunch: 11:30am – 12:15pm*

*Dinner: 4:30pm – 5:15pm*

### **CCS/Feed the Hungry**

410 N. H Street

Aberdeen, WA 98520

(360) 637-8563

*Monday – Friday 12:00pm – 1:00pm*

### **Green Lantern Lunches**

(360) 289-2971

### **South Beach Christian Outreach**

Meal Program, Food and Clothing Bank

617 S Forrest St.

Westport, WA 98595

(360) 268-1455

*Tuesday 12:00pm – 2:00pm*



---

## Senior Centers

### **Aberdeen Senior Center**

117 E 3rd Street  
Aberdeen, WA 98520  
(360) 533-3311

### **Elma Senior Center**

100 W Main Street  
Elma, WA 98541  
(360) 482-2377

### **Hoquiam Senior Center**

703 Simpson Ave  
Hoquiam, WA 98550  
(360) 532-5868

### **Montesano Community Center**

314 South Main Street  
Montesano, WA 98563  
(360) 249-5374

### **North Beach Senior Center**

885 Ocean Shores Blvd NW  
Ocean Shores, WA 98569  
(360) 289-2801

### **Westport Senior Center**

114 East Pacific Avenue  
Westport, WA 98595  
(360) 268-0156

# Department of Social & Health Services

## **Department of Social and Health Services (DSHS)**

415 W Wishkah St  
Suite A1  
Aberdeen, WA 98520  
(877) 501-2233  
[www.dshs.wa.gov](http://www.dshs.wa.gov)

## **Supplemental Nutrition Assistance Program (SNAP)/Food Stamps**

**Temporary Assistance for Needy Families (TANF):** Must have dependent children under the age of 18 and meet income criteria. Required to participate in Work First.

**Aged, Blind & Disabled (ABD):** Statewide assistance available to those who are over age 65, blind or have a long-term condition, and are likely to meet federal disability requirements with income below \$197 per month. Cannot be eligible for TANF, State Family Assistance (SFA) or Supplemental Security Income (SSI).

**Diversion Cash Assistance:** Once in a 12month period for families who would qualify for TANF but will have income to meet their needs over the next 12 months.

**Division of Vocational Rehabilitation (DVR):** DVR is a statewide resource assisting people with disabilities to prepare for, secure, maintain, advance in, or regain employment. DVR partners with organizations and businesses to develop employment opportunities. DVR serves people who seek meaningful, secure employment but whose disabilities may result in one or more barriers to achieving an employment goal.

## **Children with Special Healthcare Needs (CWSHN)**

Program development and health status assessment, resource, coordination and referral for children (up to age 18) with special healthcare needs.

Employment Support- Coordinates Group and Individual Supported Employment programming for adults with developmental disabilities.

## **Additional services or assistance for the following:**

Refugee Assistance  
Family Planning Assistance  
General Assistance Unemployable  
Child Care Subsidy  
Medical Care Programs  
Inpatient/Outpatient Chemical Dependency  
Family Counseling/ therapy  
Supplemental Security Income

# Developmental Disabilities Administration

## **Developmental Disabilities Administration (DDA)**

Employment support for the developmentally disabled, must be a client of DDA.

415 W Wishkah St  
Suite A2  
Aberdeen, WA 98520  
(360) 537-4360  
[www.dshs.wa.gov/ddd](http://www.dshs.wa.gov/ddd)

**Washington Telephone Assist Program:** Discount local telephone program that allows customers to pay \$4 per month (plus taxes) for service. Can be accessed by calling local telephone company and providing DSHS client ID number to complete eligibility process. State-wide, must be an adult receiving DSHS benefits.

**Additional Requirements for Emergent Needs (AREN) Program:** Emergency funding for those already on TANF, SFA or Refugee Cash Assistance (RCA), but have an imminent eviction, power shut-off, or other emergent need (\$750 lifetime max).

**Tangible Goods:** Clothing vouchers for parents in the WorkFirst program, and small supply of donated clothing and coats on site in the Long Beach office. Also provided are diapers for children who must be in daycare while parents look for work. Office staff keeps small supply of personal hygiene items for those who need them.

**Childcare Subsidies:** Income, schedule and size of household used to determine eligibility.

**Veterans Integration Program:**(360) 4424157 or (866) 255-4157.

*Local DSHS offices have red phones in the lobby that connect directly to HBE (for medical), and WECC (for childcare).*

# Grays Harbor College

## Grays Harbor College

Main Campus  
1620 Edward P Smith Dr  
Aberdeen, WA 98520  
(360) 532-9020

[Ghc.edu](http://ghc.edu)

Riverview Education Center (North)  
600 Washington Ave.  
Raymond, WA 98577  
(360) 538-4023 Fax:(360) 875-9467

[www.ghc.edu/locations/riverview](http://www.ghc.edu/locations/riverview)

[www.facebook.com/GHCPacificCounty](https://www.facebook.com/GHCPacificCounty)

Hours: Monday-Thursday, 8:00 am-5:00 pm  
Closed Fridays

Columbia Education Center (South)  
208 Advent Ave. SE  
Ilwaco, WA 98624  
(360) 538-2539 Fax:(360) 642-9434

[www.ghc.edu/locations/columbia](http://www.ghc.edu/locations/columbia)

Hours: Monday-Thursday, 8:00 am-5:00 pm  
Closed Fridays

### **Academic Transfer Degree:**

Associate of Arts (AA) and the Associate in  
Business degrees through Direct Transfer  
Agreement in its Pacific County Education Centers, in addition to several certification programs.

**Continuing Education:** Personal enrichment and employability skills enhancement through non-credit courses.

**Degree Options:** GHC offers both two- and four-year degree programs.

## Student Resources

### AccessAbility Services

AccessAbility Services (formerly Disability Support Services) assists qualified students with Physical, Learning, Sensory, Cognitive, and/or Psychological disabilities by identifying and coordinating reasonable accommodations for equal access to academic programs and activities.

### Bishop Center

#### **Grays Harbor Symphony**

The Grays Harbor Symphony is the third oldest community orchestra in Washington State. Founded in 1925, the first rehearsal was organized and directed by Karl Moldrem, violinist and teacher, from Aberdeen.

#### **Grays Harbor Civic Choir**

Do you love to sing? Come join the Grays Harbor Civic Choir. With multiple performances per year, the Grays Harbor Civic Choir is the place to be if you enjoy singing and performing.

#### **Grays Harbor Concert Band**

The Grays Harbor Concert Band formed in the Fall of 2017 and is a community band open to musicians of all ages and abilities. Directed by Tiffany Maki, the concert band performs concerts at the Bishop Center three times per year.

#### **Grays Harbor Opera Workshop**

Directed by Ian and Joy Dorsch, the Opera Workshop prepares two staged productions a year in the Bishop Center. There is no other program in the region that offers similar performance opportunities for aspiring (or experienced!) classical singers.

### Business Training

Grays Harbor College is committed to the belief that every person should have the opportunity for lifelong learning to investigate new career possibilities, to upgrade work skills, to enhance personal skills and to begin a pathway toward vocational and associate degrees. Grays Harbor College is also dedicated to serving the needs of our communities and supporting small business development.

#### **Business Contract Training**

The Business Contract Training program collaborates with community partners to provide training that is aligned with industry needs for a skilled workforce. Contracts are developed by training component, not by the number of participants. The focus of contract training is to be the bridge between educational programs and on-the-job skill training. Business Contract Training also provides:

- Online and on-ground credit and non-credit classes for job skills enhancement
- Short-term certifications
- Industry credentials
- Opportunities for training savings through matching grants and tax credits
- Access to a Small Business Development Center Certified Business Advisor
- Customized Training Program

### Child Care

Wunderland Childcare at Grays Harbor College  
(360) 538-4190.

Childcare is offered on the campus of Grays Harbor College. This service is available to help students with finding care for their children to allow them to attend classes and do homework.

Children ages one month through 12 years may be enrolled in the childcare program on a full-time, part-time, or drop-in basis. Extended evening hours are also available.

### **Choker Club**

Formed in the late 1940's, the purpose, organization and interest of Grays Harbor College's Choker Club is to provide financial support in a variety of ways to the athletic department and its sports programs. Choker Club funds are used to support athletic scholarships, recruiting, athletic banquets and to enhance the overall image of Choker Athletics. As financial demands continue to increase, Choker Club's support plays a vital role in enhancing our ability to compete within the Northwest Athletic Association of Community Colleges.

### **Memberships**

Membership in the GHC Choker club is open to anyone interested in supporting Grays Harbor College and Choker Athletics. In appreciation of this support, all Choker Club members receive season tickets to all Choker athletic events, discounted admission to special Choker Club functions, and an email subscription to our quarterly Choker Club newsletter. Some categories of membership also receive an attractive personalized wall plaque.

### **Clubs and Organizations**

Student Clubs & Organizations are an important part of student life. Clubs, Organizations, and Athletics are open to all interested students with the exception of the honor societies. Don't see a club that interests you? Make a new campus club! Come by the Office of Student Life (HUB 171) for more information!

### **Community Education**

Community Education classes address subjects related to leisure, lifestyle and special interest. Courses range from single day seminars to several weeks. Courses are non-credit and are taught by community professionals experienced in their chosen field.

*We're currently in remote operations due to COVID-19 restrictions. Look at our Online Courses for more classes and please keep checking back for updates.*

### **Online Courses**

Our instructor-led online courses are informative, fun, convenient, and highly interactive. We focus on creating warm, supportive communities for our learners.

### **EDventures**

Explore the arts, history, culture and natural wonders in Grays Harbor County, Pacific County and other surrounding areas! Our EDventures can be day trips or overnight trips and include transportation, admission fees, guided tours and snacks.

### **Flagger Training**

Flagger training is usually offered every month, depending on the number enrolled (all Saturdays from 7:45 am to 4:30 pm in room 2255). We must have a minimum of 10 students for a class to run. The cost is \$65. Pre-Registration and payment in full are required.

Please call (360) 538-4012 for dates and registration or email [nancy.estergard@ghc.edu](mailto:nancy.estergard@ghc.edu).

### **Community Education Online Courses**

Our instructor-led online courses are informative, fun, convenient, and highly interactive. We focus on creating warm, supportive communities for our learners.

#### **Schedule**

New course sessions begin monthly. Visit our website to view start dates for the courses that interest you. Courses are available in personal enrichment, workplace skills, teacher recertification clock hours, and business skill related topics. These 6-week courses are non-credit, offer 24-hour online access, begin monthly, and certificates of completion are available. Prices start as low as \$95.

#### **Course Subjects**

- Accounting & Finances
- Business
- College Readiness
- Computers
- Digital Photography
- Graphic Design
- Health Care
- Languages
- Law & Legal
- Teaching & Education
- Web Design & Writing **and more!**

#### **Teacher Certification Clock Hour Credit**

Grays Harbor College is approved by the Washington State Superintendent of Public Instruction to offer Continuing Education courses which meet teacher professional certification needs. Many online classes are available for clock-hour credit, as are some on-ground Continuing Education courses. All courses must be approved by your school district before enrolling in a course.

#### **Computer Lab**

***Due to COVID-19, the Computer Lab in 2314 is currently closed but you can still find the help you need!***

Please visit the eLearning/Technology Virtual Assistance Zoom Room or email us at [studenthelp@ghc.edu](mailto:studenthelp@ghc.edu)

The eLearning/Technology room is available Monday through Friday from 9 am - 4 pm.

We can help with account issues, Canvas, Word, Excel, PowerPoint, general technology questions and more.

#### **Diversity and Equity Center**

The Diversity & Equity Center (DEC) is located in the Hillier Union Building (HUB). If you are interested in volunteering in the DEC stop by or contact Richard Arquette at [richard.arquette@ghc.edu](mailto:richard.arquette@ghc.edu).

The mission of the Diversity & Equity Center is to educate and advocate for awareness, understanding, and acceptance of fair treatment for all people, ideas, and cultures.

The goals of the DEC are:

- To provide opportunities to learn and engage in conversations regarding diversity, inclusion, power, privilege, inequity, and social justice.
- To educate and bring awareness to all identities, such as but not limited to, race, ethnicity, sexual orientation, religion, socioeconomic class, age, gender, and disability.
- To celebrate differences.
- To create a campus culture accepting of all people, ideas, and culture.

Grays Harbor College values the respect for diversity of people, ideas, culture, and the environment.





## Food Options on Campus

### **Bookstore**

The Grays Harbor College Bookstore has many different varieties of snacks, candy, drinks, and even has some options for meals on the go. The Bookstore is located in the 100 building on the main campus in Aberdeen.

### **Hungry, But Have No Money?**

Student Government has partnered with the college Foundation and Coastal Harvest to establish the Harbor Landing Food Pantry. The pantry, a long-term solution for food insecurity on campus, is open Tuesday, from 10:00am–2:00pm for Spring and Winter 2020. The Food Pantry is located in the lower entrance of the 500 building (gym). Look for the double-doors on the side of the building that faces the bus stop. For more information, contact [foodpantry@ghc.edu](mailto:foodpantry@ghc.edu).

Apply for food benefits and other assistance through Washington Connection. If you have any questions, please contact Workforce Funding and Support Programs at (360) 538-4058 to make an appointment with our Staff Navigator.

### **Vending Machines**

There are vending machines placed in various locations throughout campus. The majority of locations include both snack options as well as beverage options. Methods of payment vary, but most machines accept cash, coin, and credit cards.

### GED Testing

The GED test is designed to measure the academic outcomes normally acquired by completing a typical high school program of study. Earning a GED provides opportunities to pursue higher education, obtain jobs or job promotions, and achieve personal goals.

[www.ghc.edu/admissions/high-schoolequivalency-ged-testing](http://www.ghc.edu/admissions/high-schoolequivalency-ged-testing)

### John Spellman Library

Grays Harbor College Campus  
1620 Edward P. Smith Dr.  
Aberdeen, WA 98520  
(360) 538-4050

### Lake Swano

GHC's 125-acre campus is situated in the Chehalis River Basin and is the site of the unique **Donald F. Samuelson Model Watershed**. An undertaking of students, faculty and staff, this project features nearly two miles of developed "barrier free" nature trails that traverse the site for maximum public access and use.

The one-mile loop around Lake Swano, the heart of the project, features fourteen interpretive signs that include information about watersheds, natural history, and poems by former GHC Humanities Instructor, Harold 'Jim' Enrico.

Another eighth of a mile loop that begins near the John M. Smith Aquaculture Center has been dedicated to **Louis Messmer**, who headed the college's Life Sciences department for 33 years before he retired in 1986. The trail is called "Lou's Loop Botany Trail" There are twelve numbered stops that correspond to a numbered pamphlet that highlights the botanical description and ethnographical information of each plant.

Take a self-guided tour around the two miles of trail surrounding Lake Swano.

We invite you to walk the trails and watch the seasonal changes of the watershed.

While visiting GHC's Model Watershed, it is important to remember to: avoid damage to plants and erosion by staying on the trail; carry out all your trash; leave only footprints; move quietly, observe more; keep pets on a leash and pickup after them (waste bags provided at trailhead); and no unauthorized wheeled vehicles.

**Learning Center**

The GHC Learning Center works in collaboration with faculty to provide learning support, enabling GHC students to become effective independent learners who meet their academic goals.

**Due to COVID-19 the Learning Center is temporarily closed.**

**Office of Student Life**

Research has shown that involved students, both in and out of the classroom, have a better chance of reaching their academic and personal goals. At Grays Harbor College, we offer a variety of ways that students can be involved. Supported by Services and Activities (S&A) fees collected from every student's tuition, the Office of Student Life provides events, trips, lectures, intramural, concerts, clubs, multicultural programs, leadership opportunities, and more. The Associated Students of Grays Harbor College (ASGHC), also known as the Student Government, serves as the representatives and advocates for students at GHC. ASGHC works to ensure that the student voice is included at all levels of the college, advocates for issues related to students on campus and with the state, and allocates funding for resources, programs, and events through the S&A and Student Technology fees.

**Running Start Program**

Allows high-school students to enroll in college classes. Students have access to transfer credits (must check with admissions at college of choice) when they enroll in college. Must complete GHC placement tests and be a high school student under age 21. Available in Ocean Beach, South Bend, Naselle, Raymond, and Willapa Valley school districts.

**[www.ghc.edu/academics/runningstart](http://www.ghc.edu/academics/runningstart)**

**Safety and Security**

The Campus Safety and Security Office is located in the 100 Building, room 131 and can be contacted at (360) 538-4120 or at [david.parkinson@ghc.edu](mailto:david.parkinson@ghc.edu).

The Grays Harbor College Campus Security Department is committed in providing a safe and secure environment for all students, staff and visitors by establishing a peaceful learning atmosphere where all people can attend safely and without fear. We strive to provide the college community with outstanding customer service while balancing the enforcement of the policies and procedures that we are charged to uphold.

**Student Assistance Team (STAT)**

The Student Assistant Team (STAT) is the best place to start if you don't know exactly who you need to talk to! Grays Harbor College students are encouraged to take advantage of the newly launched Student Help Desk for all your student needs. A friendly STAT member is available to assist you with your questions or point you in the right direction if your question is beyond the scope of our abilities.

**Tech Prep**

Dual-credit courses at area high schools (Ilwaco, South Bend, Naselle, Raymond, & Valley) – enrollment forms submitted by school who will submit to GHC. Students will have access to transfer credits (must check with admissions at college of choice) when they enroll in college.

**[www.ghc.edu/techprep](http://www.ghc.edu/techprep)**

**Transitions**

Adult Basic Education. Classes for persons working towards earning their GED or high school diploma, or for those who need to bring their skills up to college level.

**[www.ghc.edu/academics/transitions/finishhigh-school](http://www.ghc.edu/academics/transitions/finishhigh-school)**

**TRIO**

Located on the ground floor of the John Spellman Library in Room 1512 & 1514

TRIO is a federally funded program that works with 280 students each year. This gives the TRIO staff the time to get to know you and find out how we can help. The most important thing that TRIO does is Process Education, teaching students how to be successful in the college environment. There are many excellent faculty here who teach specific academic material, but TRIO teaches students how to make it through college!

**Veteran Resources**

Thousands of military personnel leave the service each year and select Washington state as their home, bringing with them a wealth of experience and a wide range of skills. Grays Harbor College is honored to have veterans as part of our community.

Washington's two-year colleges are a perfect fit for returning veterans who are transitioning to civilian life and private-sector jobs. Here, at GHC, we offer small class sizes, flexible hours, veterans services, and real-world education and training so veterans can hit the ground running. We offer credit for prior learning, which may be based on transfer credit, test results, portfolios or training certificates. For additional information, please read Getting Veterans Back to Work.

**Tuition Waivers**

Veterans and dependents of 100% disabled veterans may qualify for tuition waivers. Contact the Veterans Office at (360) 538-4084 for additional information.

**Overcoming Challenges**

Each veteran brings unique experiences and needs to campus, but some patterns that are common to many have been identified. These are normal challenges for veteran and active-military students. There are steps you can take to help yourself as well as a variety of resources to help you.

**On-Campus Resources****Veterans Club**

The Veterans Club meets weekly during fall, winter and spring quarters at 2 p.m. in the Veterans Lounge in the 800 Building. This student run organization is here to provide support and camaraderie for veteran students. It also conducts fundraising activities in order to provide assistance to veteran students and families. The GHC Veterans Club is a chapter of the Student Veterans of America.

**GI Bill®/VA Funding**, Rhonda Riggs, School Certifying Official for the VA. (360) 538-4099.

**Local Off-Campus Resources****Dutro Counseling**

Aberdeen, WA

VA contracted service to provide Reintegration Counseling

PTSD/War Trauma Counseling to veterans

Services are free for veterans

**(360) 537-9103**

**WA Department of Veterans Affairs**

Olympia Service Center

1-(800)562-2308

**[benefits@dva.wa.gov](mailto:benefits@dva.wa.gov)**

Assists veterans with claims processing and referrals. Provides services to veterans including a Basic Health plan, Veterans Conservation Corps, Homeless Veterans Services, and Estate management services.

**WorkSource Grays Harbor**

John Geelan @ Worksource:

511 W. Heron St.

Aberdeen, WA 98520

(360) 538-2369 /1(800)783-0657

jgeelan@esd.wa.gov

Services include Employment Services for Veterans and VA Benefits services.

**(360) 533-9318**

**Telephone Numbers Specific to Military Veterans**

**Suicide/Crisis Line for Veterans**1(800) 273-8255

**Health Eligibility Center / CHAMPVA**1(800) 733-8387

**Income Verification and Means Testing**1(800) 929-8387

**Military One Source: Services for active military members**1(800) 342-9647

**National Center for Post-traumatic Stress Disorder** 1(844) 698-2311

**Military Retired and Annuity Pay Contact Center** 1(800) 321-1080

**Veterans Group Life Insurance** 1(800) 419-1473

**Gulf War/Agent Orange/Radiation Exposure Helpline** 1(800) 749-8387

### **Workforce Funding Programs**

- Able Bodied Adults Without Dependents (ABAWD) Navigator
- Basic Food Education & Training Program (BFET)
- Early Achievers Grant
- Opportunity Grant
- WorkFirst Program
- Worker Retraining Program

### **Apply for Funding**

To apply for workforce funding, please complete our Workforce Funding Application. Once you've completed the application, email it to [stacey.quarles@ghc.edu](mailto:stacey.quarles@ghc.edu). For questions call (360) 538-4058 or visit our virtual lobby from 9 am – 2 pm Mon-Thurs.

### **Able Bodied Adults Without Dependents (ABAWD) Navigator**

ABAWDS eligibility:

- 18-49 years old
- Able to Work
- Without Dependents

Our ABAWD Navigator is a resource to all community members and enrolled college students

**Basic Food Employment & Training (BFET):** Helps students on food assistance to access childcare, skills training, and additional services while attending college. Must not be receiving TANF.

<https://www.ghc.edu/student-services/workforce-funding>

### **The Early Achievers Grant**

The Early Achievers Grant is a student financial aid program to help employed child care providers and early learning educators' complete certificates and associate degrees in early childhood education.

To be eligible, you must:

- Be a Washington state resident or have a valid work visa.
- Be employed as a child care provider at a child care center, family child care business or Head Start/ECEAP program that is actively participating in the Department of Early Learning's Early Achievers.
- Work a minimum of 10 hours a week or 40 hours a month at an eligible child care program.
- Have worked in the eligible program for a minimum of three months.
- Intend to enroll in an approved Early Childhood Education program at the college.
- Make a formal application to the college
- Submit the Workforce Funding and Support Programs application to the 800 building on campus including the EAG employment verification form.

Services Provided

Funding for:

- Tuition and fees up to 52 credits to be used within four years.
- Required books and supplies up to \$1,000

Students may also get:

- Tutoring
- Career planning
- Mentoring
- Loaned textbooks, calculators or laptops
- College success classes
- Emergency child care
- Emergency transportation

### **Opportunity Grant**

The Opportunity Grant Program (OPG) is intended to assist low-income students enrolled in high-wage, high-demand career pathways. All pathways approved under the OPG provide a minimum beginning wage of \$13.00 per hour.

#### **Approved Pathways**

- Accounting
- Automotive
- Carpentry
- Commercial Transportation and Maintenance (CTM)
- Criminal Justice
- Diesel
- Medical Assistant
- Nursing (Must be accepted into the Nursing program)
- Welding

**WorkFirst:** Helps students receiving Temporary Assistance for Needy Families (TANF) to access childcare, skills training, and additional support services while attending Grays Harbor College.

[www.ghc.edu/student-services/workforcefunding](http://www.ghc.edu/student-services/workforcefunding)

### **Worker Retraining**

The State Worker Retraining Program provides access to training and funding support to laid off, unemployed and dislocated workers in the State of Washington.

#### **Eligibility**

- Facing a layoff and eligible to collect unemployment benefits.
- Currently collecting unemployment benefits.
- Exhausted unemployment benefits within past 48 months.
- Displaced Homemakers (dependent on income of another family member and no longer supported by that income).
- Self-employed and now unemployed.
- Honorably discharged veteran within the past 48 months.
- Active Duty Military with an official order of separation.

Stop-Gap employment (temporary work accepted only because of layoff or termination due to no fault of your own).

#### **Services**

- Tuition assistance
- Required textbooks and supplies for classes
- Educational planning and advising

### **Writing Center**

The Writing Center is a space for all Grays Harbor College students to work on their writing assignments and receive coaching and guidance from experienced tutors.

# Grays Harbor College Foundation

## Grays Harbor College Foundation

1620 Edward P Smith Dr  
Aberdeen, WA 98520  
(360) 538-4024

<https://www.ghc.edu/foundation>

Since 1963, the Grays Harbor College Foundation has been committed to supporting Grays Harbor College and its students. The Foundation is a 501(C)(3), not-for-profit corporation that encourages private financial support to enhance the academic environment of the college and champion student success.

The GHC Foundation is a community-based organization that solicits, receives, manages and disburses gifts that support Grays Harbor College and its students.

## Mission

The Grays Harbor College Foundation strengthens our community by serving Grays Harbor College and its students.

## Values

We value access to education

We value our donors' trust; therefore, we are good stewards of our funds.

## GHC Foundation - History

The Grays Harbor College Foundation was established as a nonprofit Washington Corporation in 1963, making it one of the oldest community college foundations in Washington State. At inception, the Foundation was managed by a board of nine trustees that were civic-minded persons who agreed to give their time and energies on behalf of the college. The founding trustees were:

- Elmer Huhta, President
- Edward Smith, Vice President
- Ernest Ingram, Secretary-Treasurer
- John Anderson, Trustee
- Don Arthaud, Trustee
- Mrs. E.K. Bishop, Trustee
- Roy Landberg, Trustee
- Larry Weinstein, Trustee
- Floyd Vammen, Trustee
- 

Today, the Foundation's board is comprised of over 20 civic-minded leaders from Grays Harbor and Pacific Counties who invest their time and energy into carrying out its mission. For over 55 years, the Grays Harbor College Foundation has been dedicated to supporting the success of students and the academic environment at Grays Harbor College!

## GHC Foundation - Donors

Our donors are comprised of community members, alumni, businesses, and other philanthropic foundations. Our donors believe their gifts will make a difference in the lives of our students and ensure advanced educational opportunities at the college.

Let us help match your interests with a variety of programs and initiatives at Grays Harbor College. Your gifts have the power to change individual lives, our community, and the world.

### **GHC Foundation - Student Resources**

Since 1962 GHC Foundation has been here to "increase opportunities for deserving students to realize their educational goals by offering scholarship assistance and strong support of the academic environment of the college."

The Foundation offers a variety of financial assistance to students through programs such as scholarships, emergency funding and daycare assistance.

#### **General Scholarships**

The GHC Foundation offers a wide selection of scholarships. Students who meet eligibility requirements can receive up to \$5,000 in scholarship awards per academic year. The availability of scholarships may change throughout the application process, based on funding, donor directives and other factors.

#### **Tool Scholarships**

The **Hughes Tool Scholarship** helps GHC Industrial Technology and Nursing students purchase tools required for their particular field of vocational study. Funds from the **James Davis Trust** are utilized for tool scholarships for Forestry and Natural Resources students attending Grays Harbor College to acquire the required tools and equipment for coursework that will later be utilized in the workforce.

#### **Bishop Scholarships**

A scholarship program to continue college educations for college juniors, seniors and graduate students. The endowed program, created in memory of the area's two generous benefactors, **E.K. and Lillian F. Bishop**, recognizes deserving young Grays Harbor students by supporting them as they follow their educational goals.

#### **Emergency Assistance**

The Grays Harbor College Foundation offers emergency assistance to students who experience a financial emergency or unanticipated expenses causing financial hardship. Students may seek support with temporary, short-term financial assistance. Emergency funding is not intended to provide ongoing relief of recurring expenses or as a consistent supplement for educational purposes.

#### **World Class Scholars**

The World Class Scholar (WCS) program is a partnership between students, parents and Grays Harbor College. This partnership provides a pathway to a college education for students through Grays Harbor and Pacific Counties, beginning as early as 7th grade, and provide a scholarship to students who complete the program.

#### **Other Scholarship Resources**

In addition to the scholarships offered by the Grays Harbor College Foundation, there are many different scholarship opportunities offered by other donors and organizations.



# Grays Harbor County Department of Emergency Management (DEM)

## Grays Harbor County Department of Emergency Management (DEM)

[https://www.co.grays-harbor.wa.us/departments/emergency\\_management/index.php#EOC](https://www.co.grays-harbor.wa.us/departments/emergency_management/index.php#EOC)

Director of Emergency Management  
(360) 249-3711

Deputy Director of  
Emergency Management  
(360) 249-3911

Emergency Management Program  
Coordinator  
(360) 964-1579

DEM Assistant  
(360) 964-1576

[GHCDem@co.grays-harbor.wa.us](mailto:GHCDem@co.grays-harbor.wa.us)

### Emergency Operations Center

DEM is responsible for maintaining the Emergency Operations Center (EOC) in a constant state of readiness. During a countywide disaster, the EOC becomes the hub of information gathering and dissemination, strategic decision making, resource allocation and incident coordination. Representatives from law enforcement, fire services and public health, environmental health, EMS, as well as other organizations from throughout the county work together to coordinate the response.

**The Division of Emergency Management actively prepares for and participates in the following functions:**

- Disaster Planning
- Disaster/Emergency Response Planning
- Disaster/Emergency Recovery Planning
- Emergency Operations Center (EOC)
- Emergency Preparedness
- Exercises for Disaster & Emergency Response
- Hazardous Materials Response Planning
- Public Education & Outreach
- Responder Training

**The StormReady** program helps community leaders prepare their communities for severe weather. Severe weather includes thunderstorms, flooding, tornadoes, hurricanes, high heat, high winds, and extreme cold weather. Although no community is storm proof, StormReady communities are better prepared to save lives through planning, education, and awareness.

**TsunamiReady** helps community leaders and emergency managers strengthen their local operations by being sufficiently prepared to save lives in the event of a Tsunami through better planning, education and awareness. Although no community is tsunami proof, being TsunamiReady can help minimize loss to our community. Grays Harbor County continues to hold both designations of StormReady and TsunamiReady.

### Grays Harbor County Emergency Alert Signup

<https://www.smart911.com/smart911/ref/reg.action?pa=graysharbor>

### **To evacuate or shelter in place?**

Although your first instinct may be to get away as far and as fast as possible from a hazardous event, evacuation is not always the safest option. Your home or workplace can be a safe haven during an emergency. Up-front preparations are the key to safety.

### **ROAD SAFETY!**

US-101, US-109, US-105, other local roads, and bridges may become unstable following a severe earthquake, or during flooding. It is recommended that you do not rely on road stability to make a quick escape to safety. When you can, walk to safety.

### **Types of Evacuation**

*Spontaneous Evacuation:* Residents or citizens in a threatened area observe an emergency event or receive official word of an actual or perceived threat and, without receiving instructions to do so, elect to evacuate the area. Their movement, means, and direction of travel are unorganized and unsupervised.

*Voluntary Evacuation:* This is a warning to persons within a designated area that a threat to life and property exists or is likely to exist in the immediate future. Individuals issued this type of warning or order are NOT required to evacuate; however, it would be to their advantage to do so.

*Mandatory or Directed Evacuation:* This is a warning to persons within the designated area that an imminent threat to life and property exists and individuals MUST evacuate in accordance with Official Orders.

### **How to “Shelter-in-Place”**

“Sheltering in-Place” simply means staying put inside your home, workplace, or other building until the emergency passes and the “all clear” signal is given. Local officials, especially the fire department, are best qualified to recommend protective actions against hazardous materials accidents. Sheltering in-place is most often your safest option.

Hazardous materials are all around us at home, work, and school, in industrial and commercial buildings, and on the highways. When properly handled, they pose no health threat. When improperly transported, stored, or used, or when accidentally released, however, there is a potential for devastating damage.

During an accidental release of hazardous materials, air quality may be threatened.

Evacuation may take you through a plume of toxic chemicals, leading to serious, long-term health risks or even death. Sheltering in-place can be a viable alternative which keeps you inside a protected environment.

Preparedness is the key to surviving any emergency, especially a hazardous materials accident. Toxic releases can come without warning and allow only minutes to respond.

Shelter in-place preparations complement your other family emergency preparedness efforts.

### *“Shelter-in-Place” Procedures*

- Stay inside an enclosed building, such as your home or workplace. If possible, bring your pets inside. Do not risk your safety for your pet.
- Close and lock all windows and doors to the outside. Close drapes or shades over all windows. Push wet towels under the doors to help seal against outside air.
- Turn off heating/air conditioning systems, and switch inlets or vents to the “closed” position. Close all fireplace dampers.
- Use tape and pre-cut and labeled plastic sheeting to seal around doors and windows, heating vents, skylights, or any opening which could let air in (in shelter room only).
- Seal bathroom exhaust fans or grills, range vents, dryer vents, and other openings (in shelter room only).
- While sheltering in-place, stay away from windows.
- If there is no phone in your designated shelter room, bring along a battery-operated or cellular phone.
- Listen to the Emergency Alert System radio messages and follow the message instructions. Other local radio stations may also carry the news story.
- Do not go outside or attempt to drive unless you are specifically told to do so. Evacuation procedures may vary by community.
- Once the emergency has passed, ventilate your entire house to remove any residual hazardous fumes.

### ***DO NOT:***

- Do NOT call the school or try to pick up your children. They will be safer sheltering in-place at school than they would be riding in your vehicle.
- DO NOT leave your shelter until the “all clear” signal is sounded.
- DO NOT risk your safety for your pets. If they can’t be found within a minute or two, you’ll have to shelter in-place without them.
- DO NOT wait until the disaster strikes to prepare... It’s never too early

### **Prepare your home before disaster strikes**

**Choose a room:** The ideal room has few windows, is large enough to house your whole family or co-workers comfortably, and preferably has access to water. A bedroom with adjoining bath, a large restroom, or an employee break room may be good choices.

**Prepare window coverings:** When the room is used as a shelter, the windows must be sealed against any outside air entering. Measure all window openings in the room, then add a generous six inches on all sides of each window measurement. Don't forget the skylights. Cut plastic sheeting according to the measurements. Label each sheet to show which window it covers. Store enough rolls of duct tape to go around all the windows completely.

**Prepare vent and door coverings:** Just as you did for the windows, measure each air vent, door, and any other openings leading outside the room. Cut and label plastic sheeting for each opening. Storing multiple rolls of tape allows more than one person to work at a time.

**Assemble shelter in-place supplies:** Your supplies should be stored in the chosen shelter room. Put the plastic sheets, duct tape, and other recommended supplies (see list on reverse) together in one container. An under-the-bed box works well, or use a container that fits on a closet shelf or in a cabinet.

#### *“Shelter-in-Place” supplies*

- Cut and labeled plastic sheeting for each window, door, air vent, or other opening.
- Multiple rolls of duct tape for sealing plastic sheeting (allows more than one person to work at the same time)
- Towel for under the door to seal against outside air
- Battery-powered radio, flashlight, and extra batteries; battery powered or cellular phone (if no phone in room)
- Snack foods, canned juices or other drinks, pet foods

## **Tsunami Dangers**

### *What is a tsunami?*

A tsunami is a series of waves most commonly caused by an earthquake beneath the sea floor. As tsunamis enter shallow water near land, they increase in height and can cause great loss of life and property damage where they come ashore. Recent research suggests that tsunamis have struck the Washington coast on a regular basis. They can occur at any time of the day or night, under any and all weather conditions, and in all seasons. Beaches open to the ocean, bay entrances, tidal flats, and coastal rivers are especially vulnerable to tsunamis.

### *What is the difference between a “distant” and a “local” tsunami?*

When a tsunami has been generated by a distant earthquake, it will not reach the Washington coast for several hours, and there is time to issue a warning.

When a tsunami is generated by a strong offshore earthquake, its first waves would reach the outer coast minutes after the ground stops shaking. Feeling an earthquake could be your only warning has been issued in your area!

## **Tsunami “Watch” “Advisory” or “Warning”**

**Watch:** A Tsunami Watch is the lowest level alert. A watch is issued to alert emergency management officials and the public that a tsunami *may* impact the area under the alert, though exact impacts are unknown.

During the time of a Tsunami Watch, forecasters are working to evaluate the actual threat to land and surrounding areas.

**Advisory:** When a Tsunami Advisory is posted, tsunami conditions in or near the water are expected. Under an advisory, strong ocean currents and/or waves with the *potential* to cause coastal damage are expected.

**Warning:** If a Tsunami Warning is posted, everyone in a tsunami inundation zone should evacuate to higher ground immediately. Tsunami Warnings are the highest-level alert that can be issued.

A warning means a strong tsunami *is likely* to cause widespread damage far inland from coastlines.

Those living within a tsunami inundation zone should go at least one mile inland, or 100 feet above sea level. Those living in a high rise within a tsunami zone should go to the third floor or higher in a sturdy building.

Evacuees should remain clear of coastal areas until authorities issue an "all clear" message.

### *How do you know when to evacuate?*

If you feel the ground shake, evacuate inland or to high ground immediately! A wave as high as 10 feet could reach the Aberdeen/Hoquiam area within an hour and a half of the quake. The first wave is often not the largest; successive waves may be spaced many minutes apart and continue to arrive for several hours.

## **Return only after emergency officials say it is safe.**

Isolated areas may not receive official warnings of distant tsunamis. If you notice a sudden drop or rise in sea level, move to high ground or inland immediately.

### *Where do you evacuate to?*

There are maps that show tsunami hazard areas and show assembly areas. Go to the nearest high ground—at least 50 feet above sea level, if possible.

If you don't have time to travel to high ground, but are in a multi-story building, go to an upper level. If you are on the beach and unable to get to high ground, go inland as far as you can.

### *How do I get inland or to high ground?*

Car evacuation may not be possible if an earthquake has damaged roads and power lines and resulted in significant debris. If this is the case, do not try to follow the evacuation routes out.

Evacuate on foot directly to the nearest high ground. Avoid lakes and wetlands, which are prone to flooding and liquefaction during aftershocks.

*What do the evacuation signs mean?*

Tsunami evacuation routes were developed to guide coastal residents and visitors to locations when car evacuation is possible.

Evacuation signs have been placed along the main roads to direct motorists to higher ground. In some places, there may be more than one way to reach safer areas.

These routes are marked with multiple signs showing additional options for evacuation. You will need to know the evacuation routes for your area



safer  
ground. In  
evacuation.

1 Tsunami Evacuation Route Sign

*Where can you stay until the situation is over?*

Local emergency management has designated safe assembly areas within a reasonable distance for foot traffic.

If you are at risk from a tsunami, but do not have an “official” assembly area close by, you are urged to develop a neighborhood evacuation site.

The site should be outside the tsunami hazard area, easy to get to, and capable of accommodating the number of people expected. If it is on private property, you will need the permission of the owner.

After the immediate danger is past and if there is damage to the degree that you cannot return home, you should then attempt to reach a designated assembly area. Since this may not be possible, it is a good idea to inform your County Emergency Manager of the location of your neighborhood evacuation site.

*What plans does your community have in place?*

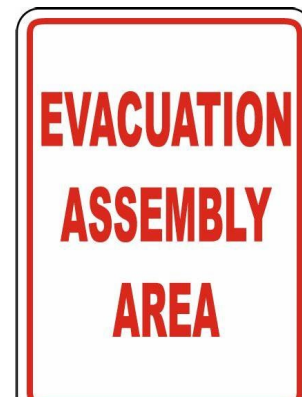
Outdoor assembly areas have been selected to facilitate delivery of emergency

services. It may be several days before help can arrive, so if possible, bring your own emergency kit and emergency shelter. The assembly areas listed below are not three-day specific in terms of boundaries.

You may camp or park in adjacent areas.

Take care not to block a roadway—leave access for emergency vehicles.

Designated assembly areas are noted on the map for each region or community.



2 Evacuation Assembly Area Sign

*What are the “Emergency Radio Frequencies”?*

Neah Bay, 162.55 MHz ~ Mount Octopus/Forks, 162.425 MHz ~ Puget Sound, 162.425 MHz

## Regional Tsunami Evacuation Maps



### Westport/Grayland and Ocosta

Designated assembly areas are:

#### Westport

- Ocosta High School

#### Ocosta

- Ocosta Community Center

#### Grayland

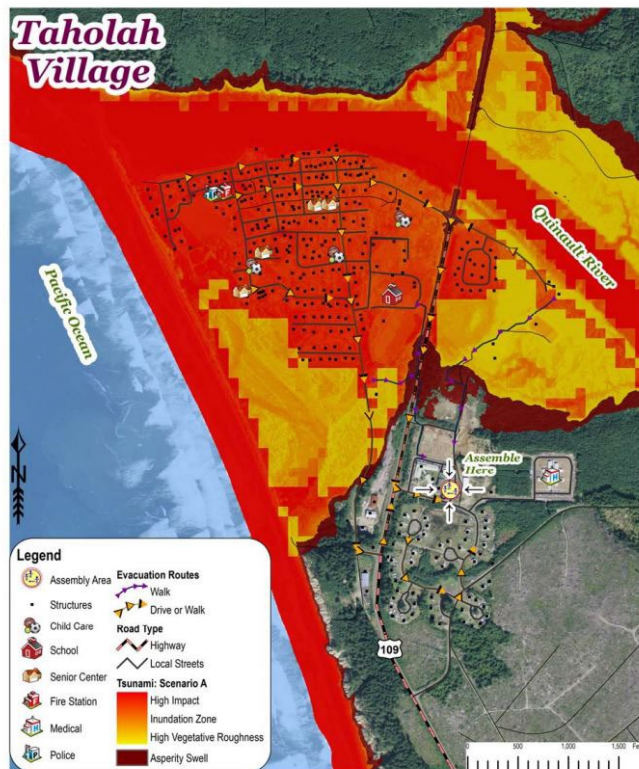
- The high ground at the end of Turkey Road

*If you are on the beach and unable to get to high ground, go inland as far as you can.*

### Taholah

If you are in Taholah, evacuate to the **Tribal Headquarters (follow the signs)** and locate the Disaster Recovery Center / Assembly Area where will coordinate further actions.

*If you are on the beach and unable to get to high ground, go inland as far as you can.*



staff

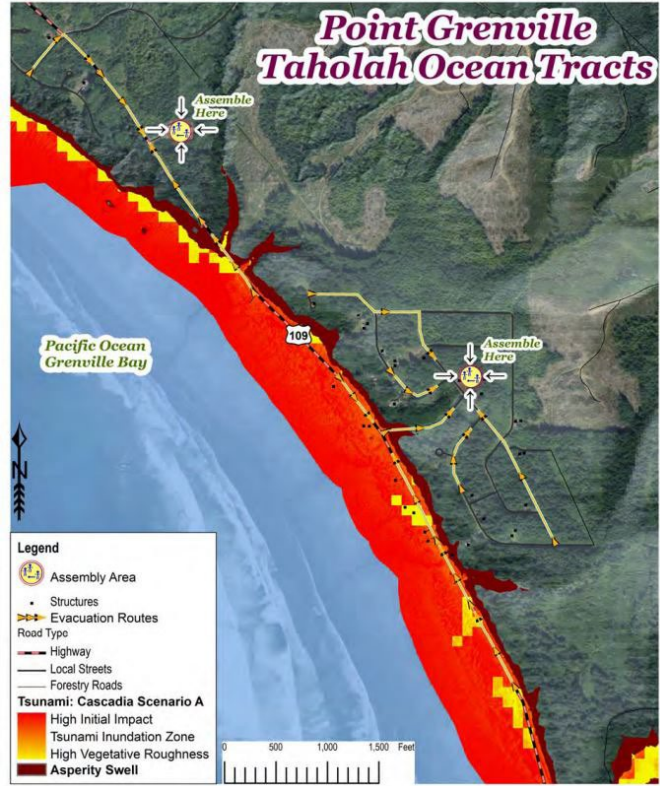
**Point Grenville/ Taholah Ocean Tracts**

If you are in the northern areas of Point Grenville, evacuate to the **QDNR facility along SR109 (follow signs)** and locate the Disaster Recovery Center / Assembly Area where staff will coordinate further actions.

If you are in the Taholah Ocean Tracts Community, **go water tower** and coordinate with your neighbors.

*Do not try to access SR109 as much of this route is the tsunami inundation zone and not safe during the*

*If you are on the beach and unable to get to high ground, go inland as far as you can.*



the  
to the  
within  
event.



**North Beach**

Designated assembly areas are:

**Ocean City**

- North Beach School District

**Pacific Beach**

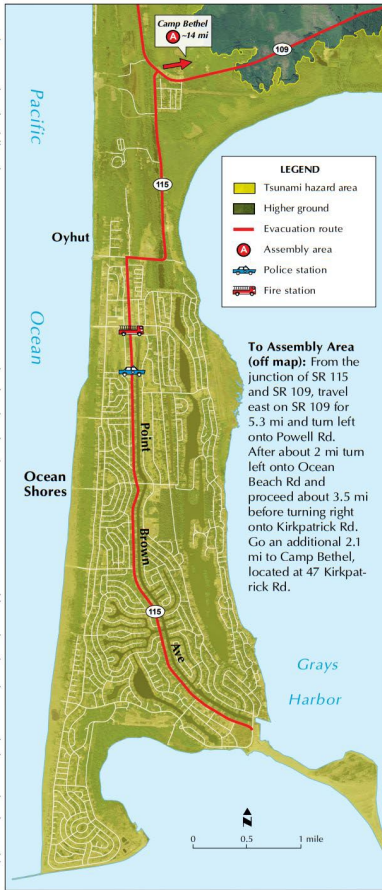
- Pacific Beach Naval Station,
- Pacific Beach Fire Station
- Seabrook Development

**Moclips**

- The old North Beach High School

*If you are on the beach and unable to get to high ground, go inland as far as you can.*





**Ocean Shores**

**PLEASE NOTE:** There are no designated assembly areas in Ocean Shores

*If you are on the beach and unable to get to high ground, go inland as far as you can.*

**Aberdeen and Cosmopolis**

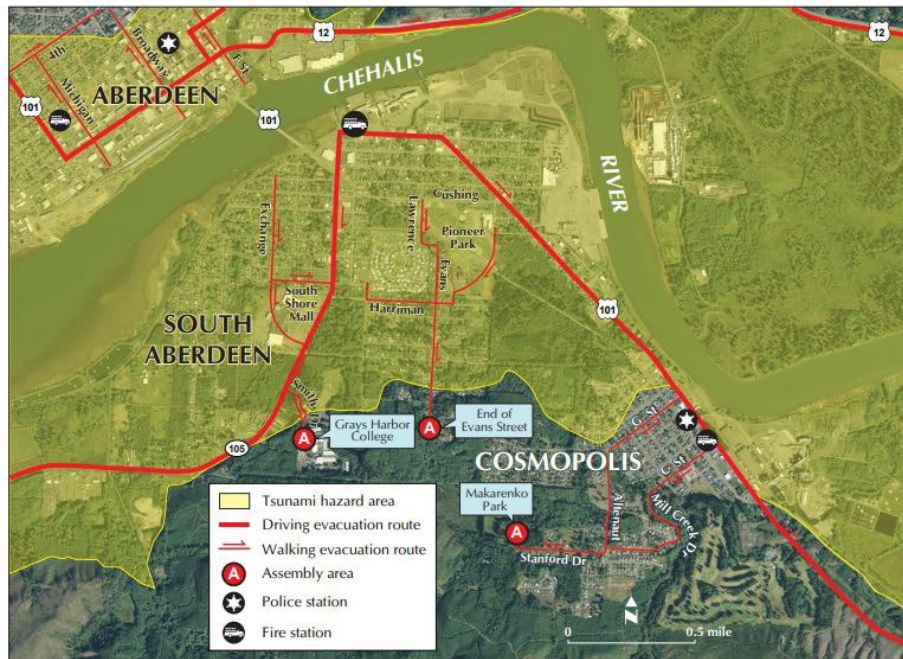
Designated assembly areas are:

**South Aberdeen**

- Grays Harbor College
- The south end of Evans

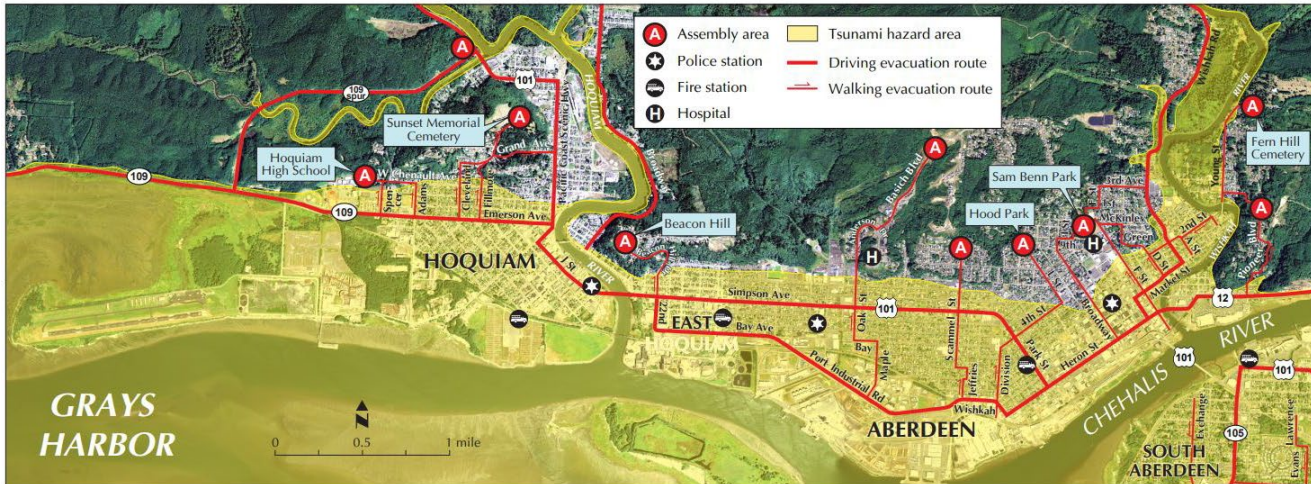
**Cosmopolis**

- Makarenko Park



South

Street



## Aberdeen and Hoquiam

Designated assembly areas are:

### Aberdeen

- Basich Blvd
- Fern Hill Cemetery
- Hood Park
- Pioneer Blvd
- Sam Benn Park
- Scammel St.

### Hoquiam

- Hoquiam High School  
*upper parking area and adjacent Lions Park (300– 400 W. Chenault Ave)*
- The old landfill site on SR 101 (north of SR 109 Spur)
- Beacon Hill
- Sunset Memorial Cemetery (801 Sunset Dr)

## **Quinault Indian Nation Emergency Management**

The Quinault Indian Nation  
Emergency Manager  
807 Fifth Ave  
Taholah, WA 985687  
(360)276-8215

Natural Hazards within the Quinault Indian Reservation include many rapidly developing events such as wildfire, earthquake, tsunami, severe weather storms, flooding, and landslides.

The most probable natural hazards include tsunami, wildfire, floods, earthquakes, and severe winter storms bringing high winds and heavy rains. Being prepared for these natural hazards by securing the area around your home and community will help to prevent unnecessary loss of life and structures.

Knowing when to keep roads clear, and when to evacuate the community requires an understanding of Emergency Services Response actions and knowing how you can help.

Tribal emergency management has tried to designate safe assembly areas within a reasonable distance for foot traffic.

If you are at risk from a catastrophe, but do not have an “official” assembly area close by, you are urged to develop a neighborhood evacuation site. The site should be outside hazard areas, easy to get to, and capable of accommodating the number of people expected.

After the immediate danger is past and if there is damage to the degree that you cannot return home, you should attempt to reach a designated assembly area.

All efforts will be made by the Quinault Indian Nation to coordinate with people arriving at these Assembly Areas and to provide assistance as needed.

## Evacuation maps

### Tsa'alal Village (North Shore entrance to Lake Quinault)



### The identified Assembly Area for Tsa'alal

The Washington State Department of Transportation

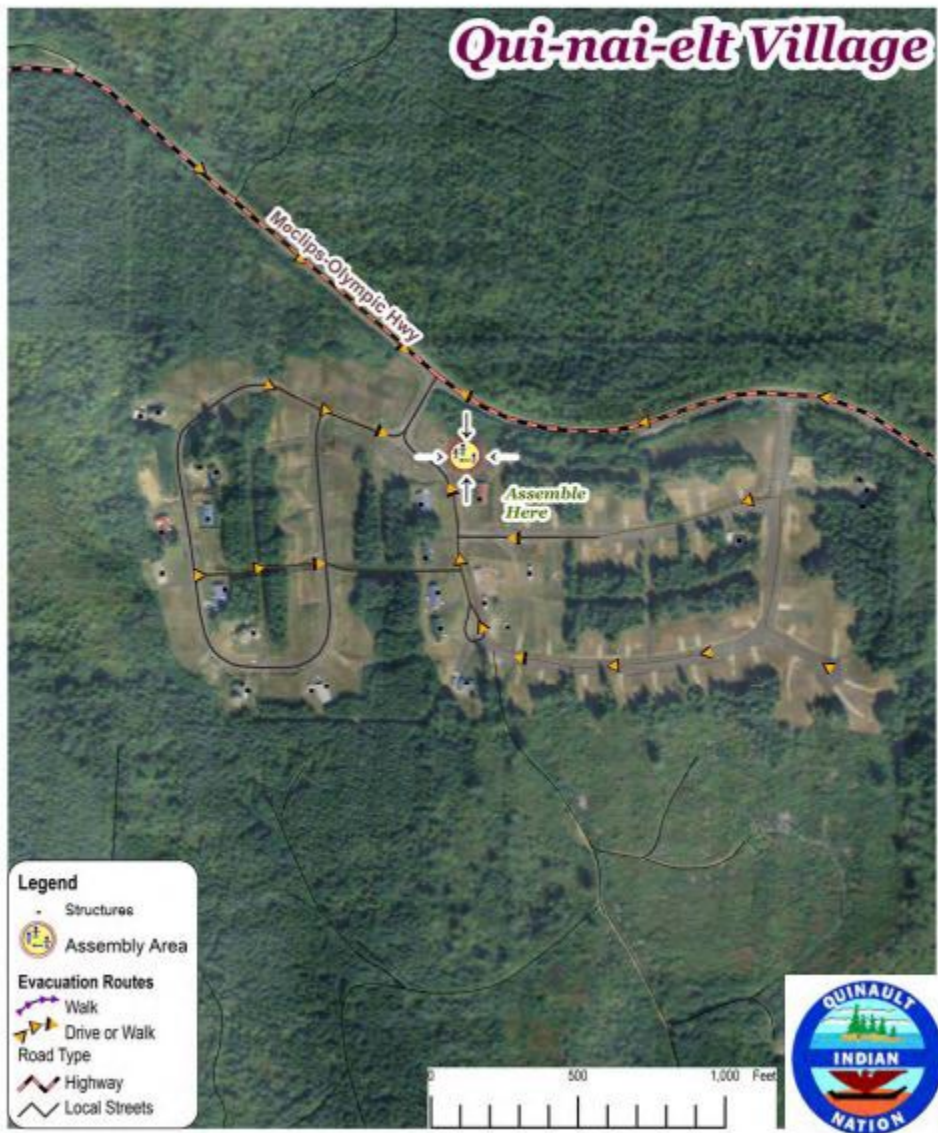
*~Amanda Park Maintenance Facility parking lot*

## Amanda Park Village (on Lake Quinault)



**The identified Assembly Area for Amanda Park**  
 School building parking lot (6130 US-101)

Qui-nai-elt Village (on the Moclips-Olympic Highway just East of Moclips)



**The identified Assembly Area for Qui-nai-elt**

The bus stop at the entrance to the Village

# Grays Harbor County Public Health & Human Services

## Grays Harbor County Public Health & human Services

2109 Sumner Ave

Aberdeen, WA 98520

(360) 532-8631

<https://www.healthygh.org/>

**Women, Infants, & Children (WIC):** Provides vouchers for certain foods, nutritional education and resources in the community. County-wide, available to women and their children under age five and under 150% of poverty level.

**Maternal Support Services (MSS):** Preventative health services including assessment, education, intervention and counseling. County-wide, on a sliding income scale to zero.

**Family Planning:** Confidential and comprehensive services on a sliding fee scale including

- o Exams.
- o STD screening/treatment.
- o Pregnancy tests, birth control and counseling.
- o Plan B and referral for sterilizations.

**Immunizations:** Distributes state-provided vaccines to local providers and adolescent and adult immunization clinics.

**Vital Records:** Preparation and information regarding birth and death certificates.

**Children with Special Healthcare Needs (CWSHN) Program:** Development and health status assessment resource, coordination and referral for children (up to age 18) with special healthcare needs.

**Access to Baby and Child Dentistry (ABCD):** Provides referrals to ABCD dentists who are specially trained to treat infants and small children. One initial exam, two exams per year (six months apart), two parent education sessions per year, and other dental work as needed. Available countywide to children birth to five years old with Medicaid. This is a referral and education program.

### Parenting Classes:

- o Parenting classes for court ordered divorce/co-parenting.
- o Triple P (Positive Parenting Program), a free, individual parenting classes tailored to the needs of individual families.
- o Court ordered parenting classes for CPS involved families.

**Mental Health Promotion Programs:** School based suicide prevention presentation, mental health first aid, and community based mental health promotion programs.

### Adventure Day & Substance Abuse Prevention Programming:

- o School based substance abuse prevention education on a low-ropes course.
- o Community mobilization, coalition support and funding for Big Brothers/Big Sisters and other youth serving agencies.
- o Fiscal agent for the south county DFC grant through WellSpring.

# Harbor Connections

## **Harbor Connections**

514 East Broadway Avenue  
Montesano, WA 98563  
(360) 249-0005

Cultivating healthy families, safeguarding children, and connecting the community to services.

**Our Children's Advocacy Center (CAC)** continues to provide justice services to all of Grays Harbor County. The concept is to care for the child victim in the most considerate way possible, avoiding additional trauma as the case is investigated. Forensic interviews are done in a non-threatening environment, well documented and recorded to eliminate the need for a child to endure repeated questioning. All necessary parties to the investigation are included in the process. Consideration is taken to support non-offending family members and to ensure the best possible outcome for those families. Equal regard is taken to assist prosecutors and law enforcement in facilitating potential prosecution. Our most recent addition to this program is Louie, our Courthouse Dog. Louie is a support for both children and families, providing a comforting friend during difficult times. He is allowed to accompany a child into the courtroom and onto the witness stand.

**Family Time (FT)** allows us to facilitate supervised visitation between parents, children, siblings and extended family. We provide a safe environment, court appropriate documentation and transportation for children to and from visit locations. This work allows children to maintain connections with the biological families, particularly while in the foster care system. We offer both private pay and State referred visitation services.

**Parent Education (PE)** at Connections is based on a nationally recognized curriculum, proven effective through research. We offer both one-on-one and group-based parenting instruction, tailored to meet the family's need. We can provide assistance and education to parents in their homes, or meet them wherever their situation has them, including shelters or treatment facilities.

**The Parent-Child Assistance Program (PCAP)** is an evidence-based home visitation case management model for mothers who have abused drugs or alcohol during pregnancy. Our goals are to help mothers build healthy lives and prevent future births of children exposed prenatally to alcohol or drugs.

Beyond the direct services we deliver, there are over-arching results that come from the collective work of Connections. The results we see are the cohesive elements of family preservation and abuse prevention. Each program touches on these two desired outcomes in some way.



# Olympic Area Agency on Aging

## Olympic Area Agency on Aging (OAAA)

2700 Simpson Ave  
Suite 205  
Aberdeen, WA 98520  
(360) 532-0520  
(800) 801-0060  
[www.o3a.org](http://www.o3a.org)

Olympic Area Agency on Aging provides a network of in-home and community services, support, programs, and assistance to older adults and other qualified adults in Grays Harbor County.

**Information & Assistance/Referral Services:** WA Health Plan finder for help signing up for Affordable Care Act.

**Family Caregiver Support Program and Relatives as Parents:** Provides assistance for grandparents and other relatives acting as caregivers.

**Medicaid In-Home Care:** Provides case management and senior legal advice clinics.

**Washington Health Benefits Exchange and Statewide Health Insurance Benefits Advisors (SHIBA)**

Medicare coverages including supplemental plans and Part D

# Women Infant & Children

## Women Infant & Children (WIC)

<https://www.doh.wa.gov/YouandYourFamily/WIC>

WIC is a place where families like yours get healthy food and a lot more. WIC is for pregnant women, new and breastfeeding moms, and children under 5. WIC made a difference for over 235,000 women, infants and children in Washington in 2019. Almost half of all babies in our state are on WIC.

## What is WIC?

- Nutrition and health information
- Free nutritious foods
- Health care services
- Referrals to other services

## Who can get WIC?

- Pregnant women
- Breastfeeding women
- New mothers
- Infants
- Children up to the age of 5

## WIC Office Locations

Quinault Indian Nation 400 8 <sup>th</sup> St Suite A Hoquiam WA 98550 (360) 276-4405	SeaMar Community Health Center 1510 W Main St Elma, WA 98541 (360) 482-4510
Grays Harbor Public Health & Social Services 2109 Sumner Ave Aberdeen, WA 98520 (360) 532-8631	Chehalis Tribal Health Clinic 21 Niederman Rd Oakville, WA 98568 (360) 462-3224
South Puget Sound Intertribal Planning Agency 4129 Shoalwater Bay Dr Tokeland, WA 98590 (360) 426-3990	Roger Saux Health Center 1505 Kla-ook-wa Dr Taholah, WA 98587 (360) 276-4405
Shoalwater Bay Wellness Center 2373 Tokeland Rd Tokeland, WA 98590 (360) 841-2244	
SeaMar Community Health Center Galilean Chapel 724 Ocean Shores Blvd NW Ocean Shores, WA 98569 (360) 289-2238	

# YMCA of Grays Harbor

## YMCA of Grays Harbor (YMCA)

2500 Simpson Avenue

Hoquiam, WA 98550

(360) 537-9622

[Ghymca.net](http://Ghymca.net)

The Young men's Christian Association is the largest not-for-profit community service organization in the United States. YMCAs are involved in 10,000 communities across the nation. YMCAs are working in 120 countries, and serving over 30 million people. The YMCA is an organization that has influenced many lives since its formation. Many other service organizations such as Gideon's International, Boy Scouts of America, and Campfire Girls have their roots at YMCAs. The YMCA organization has survived through world wars and depressions and continues to impact the lives of people all over the world.

The first YMCA in Grays Harbor formed in 1902. The Hoquiam and Aberdeen YMCAs operated independently until December 1998 when they decided to unite and become the YMCA of Grays Harbor. The unification of these two YMCAs allowed the construction of a new 57,000 square foot facility, which is a major improvement over the old facilities.

The Y offers more than programs and services, we ensure that every individual has access to the essentials needed to learn, grow, and thrive.

Our fitness classes not only improve someone's physical health; they help unleash a new outlook on life.

Our family activities not only bring families together, they help families stay together.

Our youth programs not only teach children to dribble or how to swim, they provide kids lifelong lessons like confidence and teamwork.

Our Y offers Zumba, Pilates, Spinning, Kickboxing, Water Aerobics, and many more great group exercise programs in person, online, or a combination of both.

Our Y offers a Lap Pool for lap swim with walking water in the Rec Pool, Water Aerobics, Swim Lessons, Swim Team, and Family Swim.

---

# **City/ Community Information**

# Aberdeen

**City Hall**

200 E Market St  
Aberdeen, WA 98520  
(360) 537-3227  
[www.aberdeenwa.gov](http://www.aberdeenwa.gov)

**Fire Station**

Aberdeen Fire Department  
700 W Market St  
Aberdeen, WA 98520  
(360) 532-1254

Aberdeen Fire Station  
700 US-101  
Aberdeen, WA 98520

Ocosta Fire District  
119 Johns River Rd  
Aberdeen, WA 98520  
(360) 648-2240

Fire District 2 station 2-1  
6317 Olympic Hwy  
Aberdeen, WA 98520  
(360) 532-6050

Fire District 10  
4660 Wishkah Rd  
Aberdeen, WA 98520  
(360) 533-5773

**Library**

Aberdeen Timberland Library  
121 East Market Street  
Aberdeen WA 98520  
(360) 533-2360

**Police Department**

210 E Market St  
Aberdeen, WA 98520  
(360) 533-3180

**Post Office**

115 N 'K' St  
Aberdeen, WA 98520  
(360) 537-7205

**Schools**

Aberdeen School District  
 216 North G Street  
 Aberdeen, Washington 98520  
 (360) 538-2000

**[Asd5.org](http://Asd5.org)**

Aberdeen High School 410 North G Street Aberdeen, WA 98520 (360) 538-2040	Central Park Elementary 601 School Road Aberdeen, WA 98520 (360) 538-2170
Harbor Learning Center 300 North Williams Aberdeen, WA 98520 (360) 538-2180	Mc Dermoth Elementary 409 North K Street Aberdeen, WA 98520 (360) 538-2120
Harbor Learning Center 300 North Williams Aberdeen, WA 98520 (360) 538-2180	Robert Gray Elementary 1516 North B Street Aberdeen, WA 98520 (360) 538-2140
Miller Junior High School 100 East Lindstrom Street Aberdeen, WA 98520 (360) 538-2100	Stevens Elementary 301 South Farragut St Aberdeen, WA 98520 (360) 538-2150
A.J. West Elementary 1801 Bay Avenue Aberdeen, WA 98520 (360) 538-2130	Hopkins Early Childhood Center 1313 Pacific Avenue Aberdeen, WA 98520 (360) 538-2190

**Alternative School Options****Twin Harbors Skills Center**

410 North G Street  
 Aberdeen, WA 98520  
 (360) 538-2039

**St. Mary's Catholic School**

518 N 'H' Street  
 Aberdeen, WA 98520  
 (360) 532-1209

**[www.saintmaryschool.org](http://www.saintmaryschool.org)**

**Clothing/Food Banks**

Aberdeen Community Food Bank 420 N Broadway Aberdeen, WA 98520 (360) 533-1088	Aberdeen Baptist Church Food Bank 2733 Aberdeen Ave Aberdeen, WA 98520 (360) 533-1572
Union Gospel Mission 405 E Heron ST Aberdeen, WA 98520 (360) 533-1064	Aberdeen Food Bank 2120 Commerce St. Aberdeen, WA 98520
Salvation Army- Grays Harbor 118 W Wishkah St Aberdeen, WA 98520 (360) 533-1062	Salvation Army 120 W. Wishkah Street Aberdeen, WA 98520 (360) 533-1062
Salvation Army Church 215 N G ST Aberdeen, WA 98520 (360) 532-8346	CCS/Feed the Hungry 410 N. H Street Aberdeen, WA 98520 (360) 637-8563

**Aberdeen Senior Center**

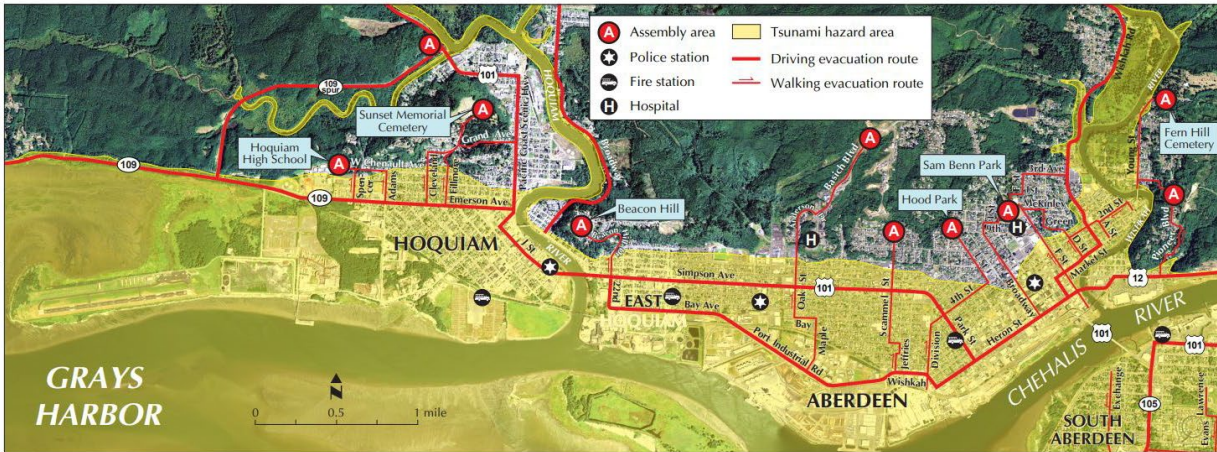
117 E 3rd Street  
Aberdeen, WA 98520  
(360) 533-3311

**Aberdeen Parks & Rec**

Pioneer Park  
Morrison Riverfront Park  
Stewart Field Ballpark  
Lions Park  
Zelasko Park  
Finch Playfield and Waterpark  
Alder Creek Park  
Garley Park (off leash dog park)  
Hood Park  
McKinley Park  
Skate Park  
Johns River Wildlife area (boat launch and trailhead)

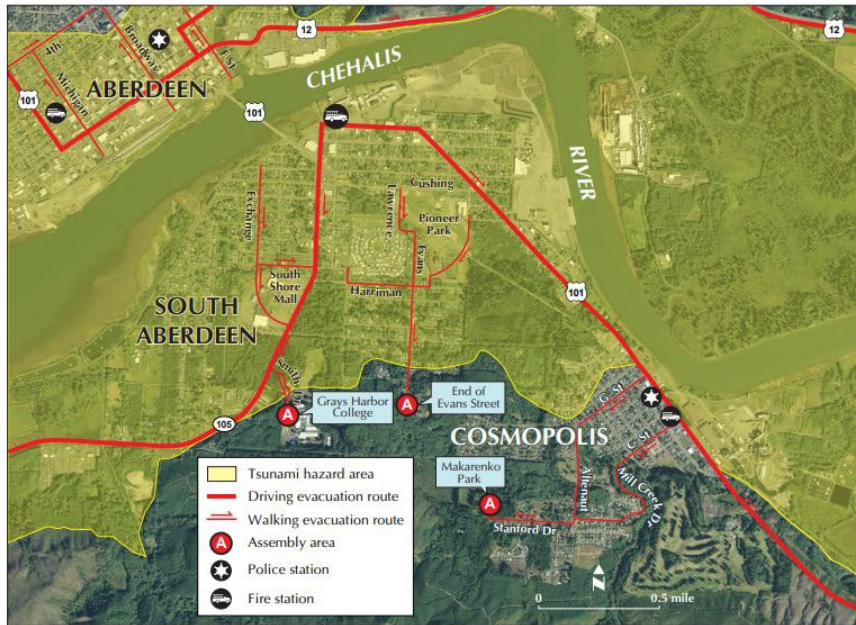
Makarenko Park  
Stewart Memorial Park  
Sam Benn Memorial Park  
Bottle Beach State Park  
Bishop Sports Park  
West End playfield  
Cobain Landing  
Harbig Park  
Lake Aberdeen Recreational area  
North Aberdeen Playfield  
Totem Pole Park

**Emergency evacuation and assembly**



**Aberdeen and Hoquiam**  
Designated assembly areas are:

<u>Aberdeen</u>	<u>Hoquiam</u>
<ul style="list-style-type: none"> <li>• Basich Blvd</li> <li>• Fern Hill Cemetery</li> <li>• Hood Park</li> <li>• Pioneer Blvd</li> <li>• Sam Benn Park</li> <li>• Scammel St.</li> </ul>	<ul style="list-style-type: none"> <li>• Hoquiam High School <i>upper parking area and adjacent Lions Park (300– 400 W. Chenault Ave)</i></li> <li>• The old landfill site on SR 101 (north of SR 109 Spur)</li> <li>• Beacon Hill</li> <li>• Sunset Memorial Cemetery (801 Sunset Dr)</li> </ul>



**South Aberdeen and Cosmopolis**  
Designated assembly areas are:

<p><u>South Aberdeen</u></p> <ul style="list-style-type: none"> <li>• Grays Harbor College</li> <li>• The south end of Evans Street</li> </ul>
<p><u>Cosmopolis</u></p> <ul style="list-style-type: none"> <li>• Makarenko Park</li> </ul>



# Amanda Park & North County Communities

## City Hall

### Fire Station

Lake Quinault Volunteer Fire Department  
6108 US-101  
Amanda Park, WA 98526

### Police Station

### Post Office

**Amanda Park**  
6094 US Highway 101  
Amanda Park, WA 98526  
(360) 288-2232

### **Neilton**

5513 US Highway 101  
Neilton, WA 98566  
(360) 288-2427

### **Humptulips**

1933 Kirkpatrick Rd  
Humptulips, WA 98552  
(360) 987-2492

### **Quinault**

518 S Shore Rd  
Quinault, WA 98575  
(360) 288-2557

### Library

Amanda Park Timberland Library  
6118 US Highway 101  
Amanda Park WA 98526  
(360) 288-2725

### Schools

Lake Quinault School District  
PO Box 38  
6130 Hwy 101  
Amanda Park, WA. 98526

<https://lakequinaultschools.org/>

**Clothing/Food Banks**

Humptulips Food Bank  
32 Mc Affee Road  
Humptulips, WA 98552  
(360) 987-2361

Quinault Food Bank  
31 Burn Road  
Neilton, WA 98566

**Senior Center****Parks & Rec****Humptulips**

Failor Lake  
Hwy 101 Boat Launch

King Salmon Bar  
Promised Land Recreation Area

**Amanda Park/ Lake Quinault**

Lake Quinault  
Quinault Rainforest Trailhead  
Falls Creek South Trailhead  
Big Spruce Trailhead  
Wrights Canyon Trailhead  
Merriman Falls  
North Fork Trailhead  
Kestner Homestead Trail

Willaby Falls Trailhead  
Lake Lane Trailhead  
Quinault Loop Trailhead  
World's Largest Sitka Spruce  
Colonel Bob Trailhead  
Fletcher Canyon Trailhead  
Maple Grove Rain Forest Trail

**Emergency evacuation and assembly**



**Tsa' Alal Village (North Shore entrance to Lake Quinault)**

**The identified Assembly Area for Tsa'alal**

The Washington State Department of Transportation

~Amanda Park Maintenance Facility parking lot

**Amanda Park Village (on Lake Quinault)**

**The identified Assembly Area for Amanda Park**

School building parking lot (6130 US-101)



# Cosmopolis & South County Communities

## **City Hall**

Cosmopolis City Hall  
1300 1st St.  
Cosmopolis, WA 98537  
(360) 532-9230  
[www.cosmopolis.us.com](http://www.cosmopolis.us.com)

## **Fire Station**

Artic Fire Station # 1  
15 Artic Rd  
Cosmopolis, WA 98537  
(360) 532-7575

Cosmopolis City Fire Department  
111 D St  
Aberdeen, WA 98520  
(360) 533-8765

North River Fire Station #2  
1661 N River Rd  
Cosmopolis, WA 98537  
(360) 532-7575

## **Police Station**

Cosmopolis Police Department  
1312 1st St  
Cosmopolis, WA 98537  
(360) 532-9237

## **Post Office**

Cosmopolis  
114 'F' St  
Cosmopolis, WA 98537  
(360) 533-3305

## **Library**

## **Schools**

Cosmopolis School District  
PO Box 479  
1439 4th St  
Cosmopolis, WA 98537  
(360) 532-7181  
<https://www.cosmopolisschool.com/>

## Clothing/Food Banks

### Senior Center

### Parks & Rec

#### **Cosmopolis**

Markarenko Park

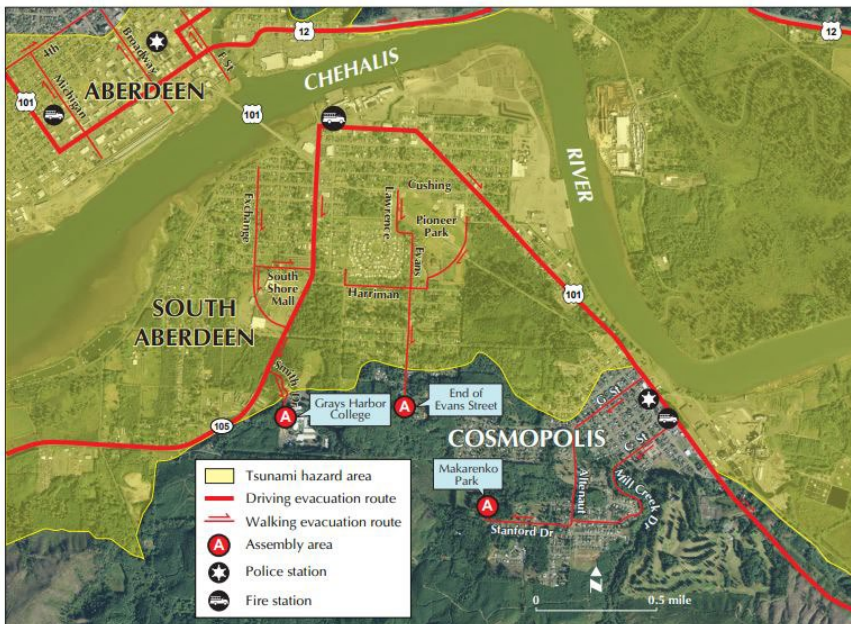
Mill Creek Park

Lions Park

### **North River Communities**

Shiloh Bible Camp

## Emergency evacuation and assembly



### **South Aberdeen and Cosmopolis**

Designated assembly areas are:

#### **South Aberdeen**

- Grays Harbor College
- The south end of Evans Street

#### **Cosmopolis**

- Makarenko Park

# Elma & East County Communities

## City Hall

### **Elma City Hall**

202 W Main St  
Elma, WA 98541  
(360) 482-2212

[www.cityofelma.com](http://www.cityofelma.com)

### **McCleary City Hall**

100 3rd Street  
McCleary, WA 98537  
(360) 495-3667

[www.cityofmccleary.com](http://www.cityofmccleary.com)

## Fire Station

<p>Cloquallum Fire Shed Satsop-Cloquallum Rd Elma, WA 98541</p>	<p>Mox Chehalis Fire Shed Mox Chehalis Rd McCleary, WA 98557</p>
<p>Elma Hicklin Road Fire Shed 462 Elma Hicklin Rd W McCleary, WA 98557</p>	
<p>Elma Fire Department 112 N 2nd St Elma, WA 98541 (360) 482-2812</p>	<p>McCleary Fire Station 100 Simpson Ave McCleary, WA 98557 (360) 495-3667</p>
<p>Fire District 1 Station 1 108 Main St Oakville, WA 98568 (360) 273-6645</p>	<p>Fire District 1 Station 2 1880 S Bank Rd Oakville, WA 98568</p>
<p>Fire District 5 428 Stamper Rd Elma, WA 98541 (360) 482-3143</p>	<p>Port Fire Station 52 3 Porter Creek Rd Elma, WA 98541 (360) 482-3771</p>

**Police Station**

Elma Police Department  
124 N 3rd St  
Elma, WA 98541  
(360) 482-3131

McCleary Police Department  
100 S 3rd St  
McCleary, WA 98557  
(360) 495-3107

**Post Office****Elma**

204 W Young St  
Elma, WA 98541  
(360) 482-2511

**McCleary**

117 S 4th St  
McCleary, WA 98537  
(360) 495-3630

**Oakville**

114 E Pine St  
Oakville, WA 98568  
(360) 273-9321

**Library**

Elma Timberland Library  
118 North First Street  
Elma WA 98541  
(360) 482-3737

Oakville Timberland Library  
204 Main St  
Oakville, WA 98568  
(360)273-5305

**Schools****Elma School District Office**

1235 Monte-Elma Road

Elma, WA 98541

(360) 482-2822

<https://www.eagles.edu/>

Elma Elementary School 1235 Monte-Elma Road Elma, WA 98541 (360) 482-2632	Elma high School 1011 W Main Elma, WA 98541 (360) 482-3121
Elma Middle School 805 West Main Elma, WA 98541 (360) 482-2237	East Grays Harbor High School 705 Waldrip Street Elma, WA 98541 (360) 482-5086

**Oakville School District**

103 School St.

Oakville, WA 98568

(360) 273-0171

<https://www.oakvilleschools.org/>

Oakville Elementary 103 School St Oakville, WA 98568 (360) 273-5946	Oakville High 103 School St Oakville, WA 98568 (360) 273-8229
--	--

**Clothing/Food Banks**

B.A.S.H./Set Free 427 W. Main Street Elma, WA 98541 (360) 861-8062 <a href="http://www.SetFreeElma.org">www.SetFreeElma.org</a>	Malone Food Bank 25 Mox Chehalis Road Malone, WA 98559 (360) 482-2329
Elma Food Bank 106 W Main St. Elma, WA 98541 (360) 482-4728	Assembly of God (Clothes & Food) 23 Mox Chehalis Rd. Elma, WA 98541
McCleary Food Bank 100 3rd South Street McCleary, WA 98557	

**Elma Senior Center**

100 W Main St

Elma, WA 98541

(360) 482-2377



**Parks & Rec****Elma**

Vance Creek County Park  
Gladys Smith Park  
Lloyd Murrey Park  
Elma Veteran's Memorial Park  
Grays Harbor County Fairgrounds  
Elma Paintball  
Elma Disc Golf  
Grays Harbor Raceway  
Shafer State Park

**Oakville**

Oakville Regional Event Center  
Oakville Baseball Field  
Capitol Forest  
Chehalis Wildlife Area

**McCleary**

Beerbower Park  
Grays Harbor ORV Park

# Hoquiam

**City Hall**

609 8<sup>th</sup> Street  
Hoquiam, WA 98550  
(360) 538-3971  
[www.cityofhoquiam.com](http://www.cityofhoquiam.com)

**Fire Station**

517 Ontario St  
Hoquiam, WA 98550  
(360) 532-3324

615 8th St  
Hoquiam, WA 98550  
(360) 538-3960

**Police Station**

Hoquiam Police Department  
215 10th St  
Hoquiam, WA 98550  
(360) 532-0892

Washington State Patrol  
3111 Pacific Ave  
Hoquiam, WA 98550  
(360) 533-5707

**Post Office**

620 8<sup>th</sup> St  
Hoquiam, WA 98550  
(360) 537-7204

**Library**

Hoquiam Timberland Library  
420 7th Street  
Hoquiam WA 98550  
(360) 532-1710

**Schools**

Hoquiam School District  
 325 West Chenault Avenue  
 Hoquiam, WA 98550  
 (360) 538-8200

**Hoquiam.net**

Highschool 501 W. Emerson Hoquiam, WA 98550 (360) 538-8210	Lincoln Elementary 700 Wood Ave. Hoquiam, WA 98550 (360) 538-8250
Middle School 200 Spencer Street Hoquiam, WA 98550 (360) 538-8220	Emerson Elementary 101 W. Emerson Hoquiam, WA 98550 (360) 538-8240
Central Elementary 310 Simpson Ave. Hoquiam, WA 98550 (360) 538-8230	

**Clothing/Food Banks**

Hoquiam Food & Clothing Bank 720 K St Hoquiam, WA 98550 (360) 533-4909	Food Distribution Center Adventist Community Services of Grays Harbor 3101 Cherry St Hoquiam, WA 98550 (360) 537-9133
---	---

**Hoquiam Senior Center**

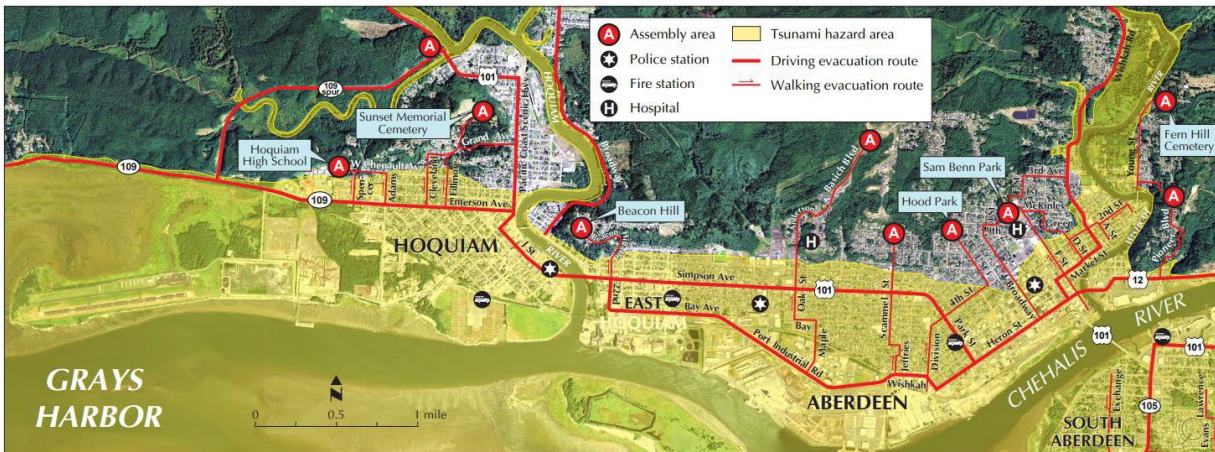
703 Simpson Ave  
 Hoquiam, WA 98550  
 (360) 532-5868

**Parks & Rec**

John Gable Community Park  
 Sonshine Park  
 Hoquiam Skate Park  
 Grays Harbor National Wildlife Refuge  
 Beacon Hill Park  
 Last Spur Park  
 Elton Bennet Park  
 Lincoln Park

Levee Street Boat Launch & Park  
 Olympic Stadium  
 Polson Museum  
 28<sup>th</sup> street Boat launch & Viewing Tower  
 Riverside Dike Park  
 Central Playground  
 Sunset Memorial Park (Cemetery)

## Emergency evacuation and assembly



**Aberdeen and Hoquiam**  
Designated assembly areas are:

### Aberdeen

- Basich Blvd
- Fern Hill Cemetery
- Hood Park
- Pioneer Blvd
- Sam Benn Park
- Scammel St.

### Hoquiam

- Hoquiam High School  
*upper parking area and adjacent Lions Park (300– 400 W. Chenault Ave)*
- The old landfill site on SR 101 (north of SR 109 Spur)
- Beacon Hill
- Sunset Memorial Cemetery (801 Sunset Dr)

# Montesano & Surrounding Communities

## **City Hall**

112 N Main St.  
Montesano, WA 98563  
(360) 249-3021  
[www.montesanol.us](http://www.montesanol.us)

## **Fire Station**

Montesano  
310 Pioneer Ave E  
Montesano, WA 98563  
(360) 249-4851

Fire Station 33  
1393 Wynoochee Valley Rd  
Montesano, WA 98563  
(360) 249-2733

Satsop  
1003 Monte Elma Rd  
Satsop, WA 98583  
(360) 482-4903

Fire District 2 station 2-2  
8 Firestation Rd  
Montesano, WA 98563  
(360) 532-6050

## **Police Station**

Montesano Police Department  
112 N Main St  
Montesano, WA 98563  
(360) 249-1031

Grays Harbor County Sheriff  
100 W Broadway Ave #3  
Montesano, WA 98563  
(360) 249-3711

**Post Office****Montesano**

211 W Pioneer Ave  
 Montesano, WA 98563  
 (360) 249-3322

**Satsop**

102 S 5th St  
 Satsop, WA 98583  
 (360) 482-3432

**Library**

Montesano Timberland Library  
 125 Main Street South  
 Montesano WA 98563  
 (360) 249-4211

**Schools****Montesano School District**

District Office  
 303 N. Church St  
 Montesano, WA  
 (360) 249-3942

**[www.monte.webnet.edu](http://www.monte.webnet.edu)**

Beacon Elementary 1717 Beacon Ave E Montesano, WA 98563 (360) 249-4528	Montesano Jr/SR High 303 N Church Montesano, WA 98563 (360) 249-4041
Simpson Elementary 519 W Simpson Montesano, WA 98563 360) 249-4331	

<b>Satsop School District</b> PO Box 96 853 Monte Elma Rd. Satsop, WA 98583 (360) 482-5330 <b><u><a href="http://www.satsopschool.org/">http://www.satsopschool.org/</a></u></b>	<b>Grays Harbor Seventh-Day Adventist School</b> 1216 State Route 12 Montesano, WA 98583 (360) 249-1115 <b><u><a href="https://www.ghacschool.org/">https://www.ghacschool.org/</a></u></b>
---	---

**Clothing/Food Banks**

Montesano Food Bank  
 213 W Spruce  
 Montesano, WA 98563  
 (360) 249-4163

**Montesano Senior Center**

314 South Main Street  
 Montesano, Washington  
 (360) 249-5374

---

**Parks & Rec****Montesano**

Friends Landing

Kelsey Park

Sterling Landing

Lake Sylvia State Park

Twin Bridges County Park

**Satsop**

Satsop River Public Boat Launch

Cool Trail Boat Dock Creek

West Fork Satsop Boat Launch

# Ocean Shores & North Beach Communities

## City Hall

Ocean Shores City Hall  
PO Box 909  
801 Minard Ave NW  
Ocean Shores, WA 98569  
(360) 289-3099  
[www.osgov.com](http://www.osgov.com)

## Fire Station

Copalis Crossing Fire Station  
1617 Ocean Beach Rd  
Copalis Crossing, WA 98536  
(360) 289-4266

Ocean City Fire Station  
2670 WA-109  
Ocean City, WA 98569  
(360) 289-4338

Ocean Shores Fire Department  
585 Point Brown Ave NE  
Ocean Shores, WA 98569  
(360) 289-3611

Fire District 7  
701 Copalis Beach Rd  
Copalis Beach, WA 98535  
(360) 289-7935

Fire District 8  
Pacific Beach  
4576 WA-109  
Pacific Beach, WA 98571  
(360) 276-4807



**Police Station**

Ocean Shores Police Department  
 577 Point Brown Ave NW  
 Ocean Shores, WA 98569  
 (360) 289-3331

Grays Harbor County Sheriff Substation  
 2652 WA-109  
 Ocean City, WA 98569  
 (360) 289-2447

Quinault Indian Nation Police Department  
 205 Cuitan St  
 Taholah, WA 98587  
 (360) 276-8211

**Post Office**

<b>Copalis Beach</b> 731 Copalis Beach Rd Copalis Beach, WA 98535 (360) 289-2703	<b>Ocean Shores</b> 689 Dolphin Ave NE Ocean Shores, WA 98569 (360) 289-3665
<b>Copalis Crossing</b> 1663 Ocean Beach Rd Hoquiam, WA 98550 (360) 289-0252	<b>Pacific Beach</b> 12 Main St Pacific Beach, WA 98571 (360) 276-4473
<b>Moclips</b> 4758 State Route 109 Moclips, WA 98562 (360) 276-4503	<b>Taholah</b> 142 W Quinault St Taholah, WA 98587 (360) 276-4636

**Library**

**Ocean Shores Library**  
 573 Pt. Brown Ave NW  
 Ocean Shores, WA 98569  
 (360) 289-3919

**Quinault Indian Nation Tribal Library**

(Taholah School/ non-public)  
 PO Box 249  
 600 Chitwhin  
 Taholah, WA 98587  
 (360)276-4729  
[www.taholah.k12.wa.us](http://www.taholah.k12.wa.us)

**Schools****North Beach School District**

P.O. Box 159

336 State Route 115

Ocean Shores, WA 98569

(360) 289-2447

<https://www.northbeachschools.org/>

North Beach Middle/Senior High School 336 State Route 11 Ocean Shores, WA 98569 (360) 289-3888	Pacific Beach Elementary School 11 4th St. Pacific Beach, WA 98571 (360) 276-4512
Ocean Shores Elementary School 300 Mt. Olympus Ave Ocean Shores, WA 98569 (360) 289-2147	

**Taholah School District**

600 Chitwhin Drive

Taholah, WA 98587

(360) 276-4780

<https://taholah.org/>**Clothing/Food Banks**

Copalis Church Community Food Bank 3137 State Route 109 Copalis Beach, WA 98535 (360) 289-2233	Pacific Beach – Mobile Food Bank 4576 WA-109 (Fire Station) Pacific Beach, WA 98571 (360) 532-6315
Ocean Shores Food Bank 846 Anchor Ave. NW Ocean Shores, WA 98569 (360) 289-2171	

**North Beach Senior Center**

885 Ocean Shores Blvd NW

Ocean Shores, WA 98569

(360) 289-2801

**Parks & Rec****Ocean Shores**

Ocean Shores Gold Course  
 Ken Peterson Park  
 Damon Park  
 Oyhut Wildlife Recreation Area  
 Spinnaker Park  
 South End Grand Canal Park  
 Bill Ellis Park  
 Skookumchuck Park  
 Emerson Park  
 Oyhut State Park

Ocean Shores Beaches  
 Weatherwax Nature Preserve and Trailhead  
 Perkins Pond and Trailhead  
 North Jetty  
 Quinault Marina  
 Coastal Interpretive Center  
 Chinook city Park  
 Bills Spit  
 North Bay Park  
 Ocean City State Park

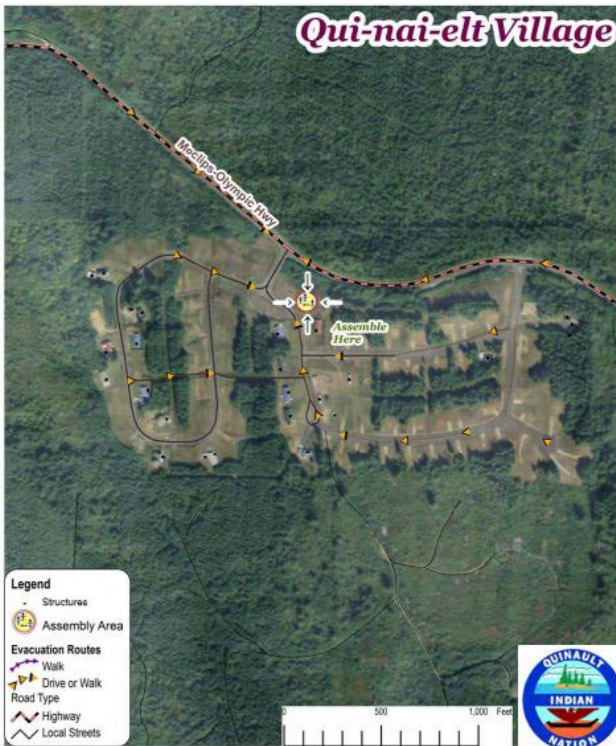
<b>Copalis Beach</b> Griffiths-Priday State Park Ghost Forest Copalis Rock Copalis Head Roosevelt Beach (Mocrocks) Access	<b>Ocean City</b> Washington Parks Ocean City Beach Access
<b>Copalis Crossing</b> Carlisle Lakes	<b>Pacific Beach</b> Pacific Beach State Park Sheahan Trail Museum of the North Beach
<b>Moclips</b> Moclips State Park Mocrocks Beach Copalis National Wildlife Refuge Point Greenville Haynisisnos Park	<b>Taholah</b> Quinault Cultural Museum Veterans Memorial Park Park Place Park (located on Park Place but did not see a name)

**Seabrook**

Crescent Park  
 Orchard Walk Park  
 Mill District Park  
 Lily Walk Park  
 Seabrook Tennis & Pickleball Courts  
 Horseshoe Park  
 Overlook Park

Seabrook playground  
 South Alder Park & Bocce Ball Court  
 Barn Hill Park  
 North Alder Park  
 Beach Camp Park  
 Sunset Amphitheater  
 Seabrook Beach

## Emergency evacuation and assembly



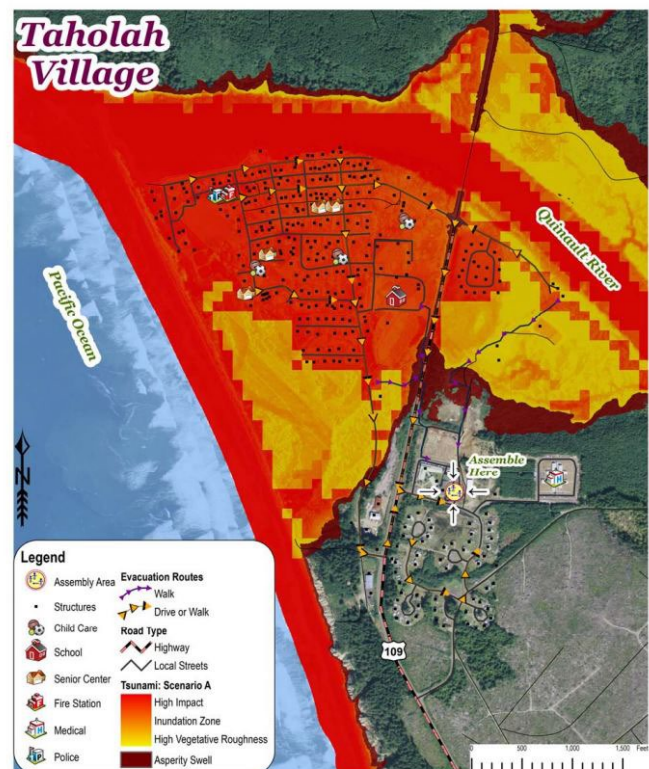
Qui-nai-elt Village (on the Moclips-Olympic Highway just East of Moclips)

The identified Assembly Area for Qui-nai-elt  
The bus stop at the entrance to the Village

### Taholah

If you are in Taholah, evacuate to the **Tribal Headquarters (follow the signs)** and locate the Disaster Recovery Center / Assembly Area where staff will coordinate further actions.

*If you are on the beach and unable to get to high ground, go inland as far as you can.*



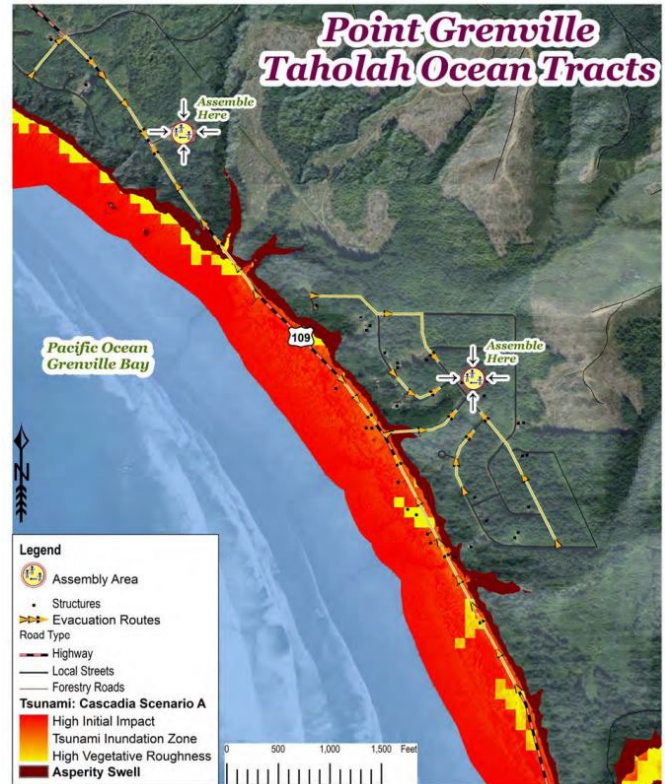
### Point Grenville/ Taholah Ocean Tracts

If you are in the northern areas of Point Grenville, evacuate to the **QDNR facility along SR109 (follow the signs)** and locate the Disaster Recovery Center / Assembly Area where staff will coordinate further actions.

If you are in the Taholah Ocean Tracts Community, **go to the water tower** and coordinate with your neighbors.

*Do not try to access SR109 as much of this route is within the tsunami inundation zone and not safe during the event.*

*If you are on the beach and unable to get to high ground, go inland as far as you can.*



### North Beach

Designated assembly areas are:

### Ocean City

- North Beach School District

### Pacific Beach

- Pacific Beach Naval Station,
- Pacific Beach Fire Station
- Seabrook Development

### Moclips

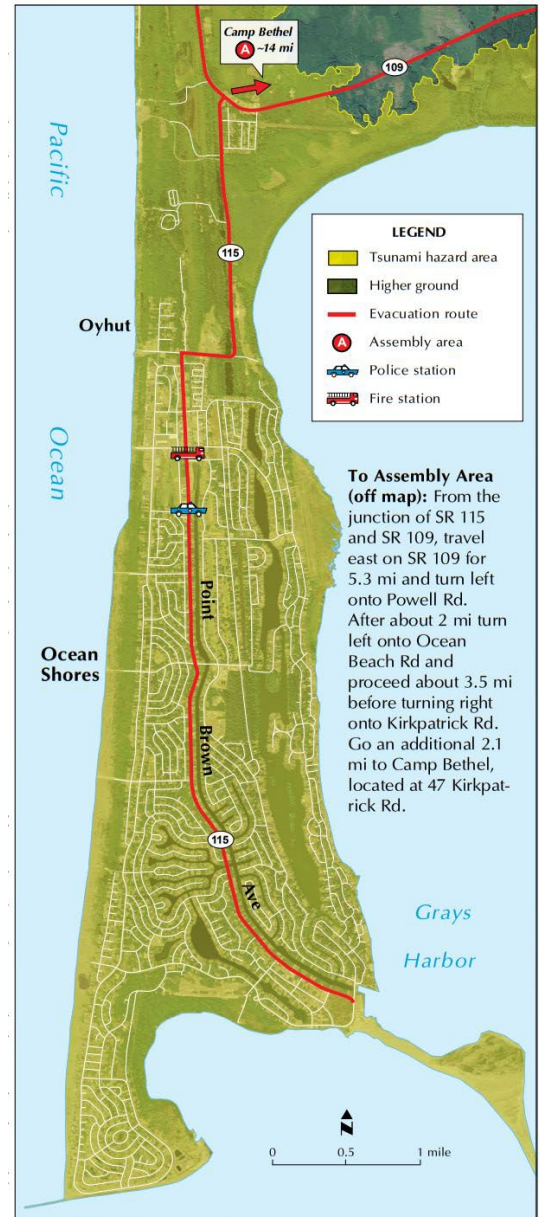
- The old North Beach High School

*If you are on the beach and unable to get to high ground, go inland as far as you can.*

## Ocean Shores

**PLEASE NOTE:** *There are no designated assembly areas in Ocean Shores*

*If you are on the beach and unable to get to high ground, go inland as far as you can.*



# Westport & South Beach Communities

## **City Hall**

506 N Montesano, St  
Westport, WA 98595  
(360) 268-0131  
[www.ci.westport.wa.us](http://www.ci.westport.wa.us)

## **Fire Station**

Grayland Fire Department  
1785 WA-105  
Grayland, WA 98547  
(360) 267-4126

North Cove Fire Department  
2829 WA-105  
Grayland, WA 98547  
(360) 267-3970

Westport Fire Station  
170 W Spokane Ave  
Westport, WA 98595  
(360) 268-9235

## **Police Station**

Westport Police Department  
740 N Montesano St  
Westport, WA 98595  
(360) 268-9197

## **Post Office**

**Westport**  
400 W Ocean Ave  
Westport, WA 98595  
(360) 268-9684

## **Grayland**

883 Cranberry Rd  
Grayland, WA 98547  
(360) 267-3712

## **Library**

Westport Timberland Library  
101 East Harms Drive  
Westport WA 98595  
(360) 268-0521

**Schools**

Ocosta School District  
 2580 South Montesano Street  
 Westport, WA 98595  
 (360) 268-9125  
<https://www.ocosta.k12.wa.us/>

Ocosta Elementary 2580 Montesano St South Westport, WA 98595 (360) 268-9125	Ocosta Jr-Sr High 2580 Montesano St South Westport, WA 98595 (360) 268-9125
--	--

**Clothing/Food Banks**

South Beach Christian Outreach Meal Program, Food and Clothing Bank 617 S Forrest St. Westport, WA 98595 (360) 268-1455	Westport/South Beach Food Bank 314 N Broadway St Westport, WA 98595 (360) 268-1686
---	---

**Westport Senior Center**

114 East Pacific Avenue  
 Westport, WA 98595  
 (360) 268-0156

**Parks & Rec****Westport**

Westport Light State Park  
 Westhaven State Park  
 Westport Viewing Tower  
 Gar Park Baseball Field  
 Shifting Sands Natural Trails  
 Westport Seashore Conservation Area

Harriet Dorland Municipal Park/ Westport City Park  
 Fisherman's Memorial  
 Grays Harbor Lighthouse  
 Twin Harbors State Park  
 Westport Dunes  
 International Mermaid Museum

**Grayland**

Grayland Beach Oba Sate Park  
 Cranberry Museum

Grayland Beach State Park  
 Seashore Conservation Area State Park



## Emergency evacuation and assembly



### Westport/Grayland and Ocosta

Designated assembly areas are:

#### Westport

- Ocosta High School

#### Ocosta

- Ocosta Community Center

#### Grayland

- The high ground at the end of Turkey Road

*If you are on the beach and unable to get to high ground, go inland as far as you can.*

---

# Services and Resources

# Addiction Services

## Alano Club (Alcoholics Anonymous)

District 21 is comprised of AA Groups in and around the Grays Harbor and Pacific County coastal region. We are glad you're here. The purpose of this site is to make sure you can find your way to a meeting within our district, or guide you to the helping hand of AA close to you.

<b>Aberdeen</b> 823 W Heron St Aberdeen, WA 98520	<b>St Andrews Church</b> 400 E 1 <sup>st</sup> St Aberdeen, WA 98520
<b>Faith Lutheran Church</b> 1296 Monte Elma Rd Elma, WA 98541	<b>St Marks Church</b> 124 N Sylvia St Montesano WA 98563
<b>North Beach</b> 873 Point Brown Ave NW Ocean Shores, WA 98569	

## Behavioral Health Resources -Adult and Children's Services

### **Hoquiam**

205 8th St.  
 Hoquiam, WA 98550  
 (360) 532-8629  
 (800) 654-3837

### **Elma**

575 E Main Street  
 Suite C  
 Elma, WA 98541  
 (360) 482-5358

**Recovery-Integrated Treatment Services (RITS)** is a new, comprehensive program provided by BHR and led by a RITS Team that includes five clinicians and case managers who specialize in mental health and substance use disorders. It is for clients who are experiencing significant mental health and substance use issues. Some of the highlights of this new program include:

- Intensive case management and substance use services both in the community and in the office
- Individualized services that meet the unique needs of each participant
- Intensive outreach provided as needed to those who need additional support engaging in services

### Blue River Recovery

2380 Southbank Rd  
 Oakville, WA 98568  
 (360) 464-9860  
 Drug Addiction Treatment Center in Oakville

### Crisis Clinic of Grays Harbor

(360) 532-HELP (4357) for Hoquiam area  
 (800) 685-6556 (East county and outside)  
 24 hours a day, 7 days a week.

**Eugenia Center**

Eugenia Center Aberdeen  
 501 N. Broadway St.  
 Aberdeen, WA 98520  
 (360) 660-1011

Our mission is to lead in providing quality care that is accessible and to support the dedicated professionals who make caring for the clients we serve their number one priority.

At Eugenia Center, we serve every individual with dignity and respect and make every effort to provide services and resources to all in need, regardless of their social or economic situation. Eugenia Center offers prevention, intervention and treatment services consistent with the principles of the Twelve-Step fellowships. The services are provided along a continuum of care consistent with the needs of each individual.

Maintaining a climate of optimism, enthusiasm, and shared accountability, Eugenia Center embodies a sense of purpose, a commitment to wellness and a dedication to continual improvement as it seeks to share the joys of recovery with those it serves.

Eugenia Center ensures the provision of an effective treatment process including assessment, treatment planning, documentation of patient progress, treatment plan reviews and updates, patient compliance reports, continuing care and discharge planning, and conducting individual and group counseling.

Our vision is to be recognized as a leader in comprehensive healthcare, challenging and inspiring our clients, families, and our employees to reach their full potential and purpose.

- Drug abuse counseling (individual and group)
- Group counseling every day
- Random drug testing
- Drug abuse education
- Case management
- Case management referrals
- Self-esteem support groups
- Court reports (as needed)
- Sober transport
- Sober coaching
- Trauma Recovery Classes
- Mental health services
- Mental health referral coordination

**Grays Harbor Comprehensive Treatment Center**

516 East 1st Street  
 Aberdeen, WA 98520  
 (360) 743-4310

**[Westernwashingtonctc.com](http://Westernwashingtonctc.com)**

Grays Harbor Comprehensive Treatment Center provides personalized opioid addiction treatment for adults. Grays Harbor CTC is an ideal outpatient treatment environment for men and women, age 18 and above, who have become dependent upon prescription painkillers, morphine, heroin, or other opioids. Services at Grays Harbor CTC include medication-assisted treatment, individual therapy, and group therapy. Adult men and women who choose Grays Harbor CTC will receive the focused care they need to end their opioid use and begin their recovery journey.

**Lifeline Connections**

311 S. I St.  
 Aberdeen, WA 98520  
 (360) 787-9319

**<https://lifelineconnections.org/locations/aberdeen-office/>**

### **Offered Services**

Start on your recovery journey today with Lifeline Connections' highly accredited mental health and substance use disorder programs. Our dedicated professional team is ready to meet with you in person or via telehealth as they support you on your journey to wellness.

- Case Management
- Medication Management
- Individual Therapy
- MAR (Medication Assisted Recovery)
- Substance Use Disorder (SUD)
- Problem Gambling Treatment

### **Narcotics Anonymous**

**Gha-na.org**

<b>Aberdeen</b> 823 W Heron St Aberdeen, WA 98520	<b>North Beach</b> 873 Point Brown Ave NW Ocean Shores, WA 98569
---	--

### **Northwest Indian Treatment Center**

P.O. Box 477  
 308 E. Young  
 Elma, WA 98541  
 (360) 482-2674

Using approaches grounded in evidence, experience and a deep understanding of culture, we treat trauma first—this unique approach of addressing historical, systematic, and individual trauma is the center of NWITC's strength and success. Using culturally adapted best practices, the NWITC provides clinical, cultural, and support services to clients during the 45-day treatment program, intensive recovery support with alumni after treatment, and recovery coach programming in tribal communities. Welcomed, envisioned and collaboratively implemented by tribal leaders who felt the urgent need for such a facility, the NWITC was developed to serve tribal people who have addictions and unresolved grief and trauma in a calming location and supportive environment that is centered on tribal people and culture. At the heart of the NWITC development was immersive, culturally based treatment and intensive content to address the roots of client trauma to help clients reconnect to their identities as Native people and move toward stability and wellness.

### **Quinault Substance Abuse**

1505 Kla-Ook-Wa Drive  
 Taholah, WA, 98587  
 (360) 276-4405

**<https://sobernation.com/listing/quinault-indian-nation-chemical-dependency-program-taholah-wa/>**

Cognitive/behavioral therapy, Dialectical behavioral therapy, Substance abuse counseling approach, Trauma-related counseling, Rational emotive behavioral therapy

### **Social Treatment Opportunity Programs (STOP)**

114 north Park St  
 Aberdeen, WA 98520  
 (360) 533-4997

**<http://www.stopwa.com>**

We will help you find the best addiction treatment solution.  
 Talk to a caring expert, calls are free and fully confidential

**Sunrise Counseling**

1200 N Montesano Ave # 105

Westport, WA, 98595-0000

(360) 268-9051

**Trinity Behavioral Health**

138 S 1st St

STE 6

Montesano WA, 98563

(360) 964-4138

- Full Evaluation
- DUI Deferred Prosecution Evaluation
- Family Law Evaluation
- Alcohol and Other Drug Information School (ADIS)
- Intensive Outpatient Groups
- Relapse Prevention/Outpatient Groups
- Suboxone Groups
- Individual and Group Counseling

# Animal Services & Rescue

## **PAWS of Grays Harbor**

800 West 1<sup>st</sup> St  
Aberdeen, WA 98520  
(360) 533-1141

***Pawsggh.org***

PAWS of Grays Harbor protects dogs and cats until they can be united with family. PAWS of Grays Harbor is the largest No Kill animal shelter in Grays Harbor County. We were established as a non-profit organization in June of 1973 making our home in Aberdeen, WA. This organization serves our community through the education of pet owners; providing a safe shelter for lost, abused and unwanted pets; a reduced cost Spay and Neuter Program to limit the number of unwanted pets; and through pet adoptions to suitable homes. Many lives have been changed through the love and commitment to saving abandoned and abused pets.

## **Grays Harbor County Animal Control**

Animal Control officers handle the investigation of animal abuse and neglect, potentially dangerous and dangerous dog complaints for the Sheriff's Office. New reports are made through the communications center at (360) 533-8765.

## **East County TNR (Trap-Neuter-Return)**

(360) 300-7084

***Eastcountyrescue.org***

East County Rescue's mission is to improve the lives of cats and kittens around us. We rescue and give care before finding their forever families.

# Childhood & Youth Services

## **ABCD (Access to Baby & Child Dentistry)**

Aberdeen Health Dept.  
(360) 532-8631

## **Adoption Counseling & Referral for all Children**

(800) 222-9383

## **Answers for Special Kids (ASK)**

Resource line (800) 322-2588

[www.withinreachwa](http://www.withinreachwa)

[www.parenthelp123](http://www.parenthelp123)

\*Servicios en Espanol disponible

## **Child Care Action Council**

(800)845-0956

(360) 786-8907

[www.ccacwa.org](http://www.ccacwa.org)

\*Free listing of child care providers.

## **Child Care Connections**

(844) 626-8687

[www.dshs.wa.gov/onlinecs/wccc](http://www.dshs.wa.gov/onlinecs/wccc)

## **Child Care Aware**

800-446-1114

(253) 383-1735

## **Child Find of America**

(800) I-AM-LOST / (800) 426-5678

\*For parents of lost/abducted children

(800) A-WAY-OUT / (800)292-9688

\*For parental abduction mediation

## **Child Help USA**

National Child Abuse Hotline

(800) 422-4453

## **Connections: A Center for Healthy Families**

514 E Broadway

Montesano, WA 98563

(360) 249-0005

(800) 959-1467

\*Support for child abuse victims & their families.

\*Translator accessible.

[www.cacgh.org](http://www.cacgh.org)



**Children's Resource Line**

(866) 987-2000

[www.seattlechildrens.org](http://www.seattlechildrens.org)

\*Sponsored by Seattle Children's Hosp.

**Children with Special Health Care Needs**

2109 Sumner Ave.

Aberdeen, WA 98520

(360) 532-8631 ext. 236

\*Case management from birth -18 with special health care needs. (Grays Harbor Health Dept)

**Early Support for Infants & toddlers**

(South Sound Parent to Parent)

1313 Pacific Ave

Aberdeen, WA 98520

(360) 972-0460

\* Help with health, vision, hearing & developmental concerns.

**ESD 113 GH Youth Programs**

(360) 538-6577 Grays Harbor

(360) 875-9470 ext. 4 Pacific County

\*Summer and year-round training/employment opportunity for youth.

**GH Youth Center**

111 E 4th St

Aberdeen, WA 98520

(360) 589-3259 (24-hour referral & info line)

\*Temporary safe place for teens between 13&17.

**GRAVITY Learning Center**

1700 Cherry Street Ste B

Aberdeen WA 98520

(360) 209-5431

**Grays Harbor Child Advocates**

1017 S Boone St #312 (NEED UPDATED ADDRESS)

Aberdeen, WA 98520

(360) 612-3273

[Casaofgraysharbor.org](http://Casaofgraysharbor.org)

The Grays Harbor Child Advocates Program is committed to recruiting, training, supporting, and empowering court-appointed volunteers to advocate for abused and neglected children so that all children can thrive in safe, permanent homes.

**Harbor Connections**

514 East Broadway Avenue

Montesano, WA 98563

(360) 249-0005

Cultivating healthy families, safeguarding children, and connecting the community to services.

**Heart and Hands**

2638 Simpson Avenue  
 Hoquiam, WA 98550  
 (360) 532-1104

**Heartandhandspc.org**

We offer free Pregnancy Tests, Pre-natal thru parenting education, Pregnancy & Early Childhood Education, Material Resources, and Community Resources. We're here to give you a helping hand.

**Hopkins Early Learning Center**

1313 Pacific Ave  
 Aberdeen, WA 98520  
 (360) 538-2190  
 \* Birth to 5 Preschool, assessments

**Kinship Care Support & Resources**

2700 Simpson Ave  
 Aberdeen, WA 98520  
 (360) 538-2458  
 (866)582-1485

**Migrant Program (Aberdeen School Dist)**

(360) 538-2000  
 \*Spanish speaking interpreter & advocate for Hispanic migrant families.  
 \*Head Start/ECEAP services for migrant families

**National Runaway Safe line**

(800) Runaway (1-800-786-2929)

**Parent to Parent @ the ARC of Grays Harbor**

523 W 1st Street,  
 Aberdeen, WA 98520  
 (360)537-7000

**PAVE (Partnership for Action, Voice for Empowerment)**

Workshops, resources & referrals regarding Special Education.  
 (800)572-7368.

**Sound to Harbor Early Learning Programs**

(360) 464-6800  
[www.soundtoharbor.com](http://www.soundtoharbor.com)  
[www.esd113.org](http://www.esd113.org)

A free preschool program for income eligible three and four-year olds.

**Women Infant & Children (WIC) Office Locations****<https://www.doh.wa.gov/YouandYourFamily/WIC>**

<b>Chehalis Tribal Health Clinic</b> 21 Niederman Rd Oakville, WA 98568 (360) 462-3224	<b>SeaMar Community Health Center</b> 1510 W Main St Elma, WA 98541 (360) 482-4510
<b>Grays Harbor Public Health &amp; Social Services</b> 2109 Sumner Ave Aberdeen, WA 98520 (360) 532-8631	<b>SeaMar Community Health Center</b> Galilean Chapel 724 Ocean Shores Blvd NW Ocean Shores, WA 98569 (360) 289-2238
<b>Quinault Indian Nation</b> 400 8 <sup>th</sup> St Suite A Hoquiam WA 98550 (360) 276-4405	<b>Shoalwater Bay Wellness Center</b> 2373 Tokeland Rd Tokeland, WA 98590 (360) 841-2244
<b>Roger Saux Health Center</b> 1505 Kla-ook-wa Dr Taholah, WA 98587 (360) 276-4405	<b>South Puget Sound Intertribal Planning Agency</b> 4129 Shoalwater Bay Dr Tokeland, WA 98590 (360) 426-3990

**Working Connections Child Care**

(877) 501-2233

**[www.dshs.wa.gov/onlinecso/wccc](http://www.dshs.wa.gov/onlinecso/wccc)****YMCA of Grays Harbor**

2500 Simpson Ave  
 Hoquiam, WA 98550  
 (360) 537-9622

**[www.ghymca.net](http://www.ghymca.net)****Youth at Risk**

(Grays Harbor County Juvenile Court Services)

(360) 533-3919

(888)713-6115

# Disability Services

## **Adult Protective Services**

(877) 734-6277

Purpose is to promote, plan, develop and provide long-term care services responsive to the needs of persons with disabilities and the elderly.

## **The Arc of Grays Harbor**

P.O. Box 179

Aberdeen, WA 98520

(360) 537-7000

[arcgh.org](http://arcgh.org)

Intellectual and Developmental Disability Resource Center: One-stop access to information regarding goods and services related to meeting the needs of those with intellectual and/or developmental disabilities. Provides access to information available to anyone with questions regarding developmental disabilities. Some programs have specific requirements.

## **Coastal Community Action Program (CCAP)**

101 E Market St

Aberdeen, WA 98520

(360) 533-5100

[www.coastalcap.org](http://www.coastalcap.org)

## **Center for Children with Special Needs**

Box 5371, CW8-6

Seattle, WA 98145-5005

(206) 987-3736

Provides information to families and healthcare professionals, education and family partnerships in health care. Collaborates with a variety of healthcare organizations, state agencies, and families, to plan and implement programs that improve care and increase access to community resources.

## **Basics NW (Behavioral and Social Intervention & Consultation Services Northwest)**

8282 28th Court NE

Ste. A

Lacey, WA 98516

(360) 915-6868

[www.basicsnw.com](http://www.basicsnw.com)

## **Children with Special Healthcare Needs (CWSHN)**

Program development and health status assessment, resource, coordination and referral for children (up to age 18) with special healthcare needs.

Employment Support- Coordinates Group and Individual Supported Employment programming for adults with developmental disabilities.

## **Harbor Alternative Living Association (HALA)**

111 S Wooding St

Aberdeen, WA 98520

(360) 538-1374

<https://hala-gh.org/>

Harbor Alternate Living Association (HALA) is non-profit agency dedicated to helping people with developmental disabilities recognize their strengths and abilities. We provide Supported Living services throughout Grays Harbor County that aims to empower them to live independent lives.

**Morningside**

110 West Market St  
Aberdeen, WA 98520  
(360)533-8820

<https://morningsideservices.com/service-area/service-area/grays-harbor-county/>

Since 1963 Morningside has been helping change the lives of individuals with disabilities by matching their skill and interest with jobs in the community. Morningside is one of the nation's most successful programs for matching individuals having significant disabilities with jobs in the community. Our success lies in the extremely professional, qualified and motivated staff who are the solid linkage between employers and people with disabilities who want to work.

**Washington PAVE**

6316 So. 12<sup>th</sup> St.  
Tacoma, WA, 98465  
(253) 565-2266

[wapave.org](http://wapave.org)

Parent Training Information Center: Provides training, resources, and support for parents in Washington state whose children have special learning needs. Staff and volunteers work one-to-one or provide workshops on various aspects of obtaining appropriate services in the public-school system.

Family to Family Health Information Center: Serves children with special healthcare needs age birth to 18 years. Provides individual information on advocating for children in the health care system and referrals to resources that are available in Washington State that provide information on healthcare.

Response to Intervention (RTI): Process that schools use to identify students who are struggling in school and get them support. All students are screened by teachers to see if they need help in an area. Teachers monitor students' progress and adjust interventions based on individual needs. There are three levels of interventions that increase in intensity.

Specialized Training of Military Parents (STOMP): Information and training regarding special education and other resources available to military families of children with disabilities.

# Education

## **Co-Op Preschools**

Montesano Co-Op  
401 Spruce Ave  
Montesano, WA 98563  
(360) 249-2717  
[www.montesanoevents.com](http://www.montesanoevents.com)

Central Park C-Op  
6508 Manor Rd  
Aberdeen, WA 98520  
(360) 532-1530  
[www.Centralparkpreschool.com](http://www.Centralparkpreschool.com)

## **Evergreen State College**

2700 Evergreen Parkway NW  
Olympia, WA 98512  
(360) 867-6000  
[www.evergreen.edu](http://www.evergreen.edu)

- Associate Degree Programs
- Bachelor's Degree Programs
- Post-Grad Degrees
- Certifications

## **Grays Harbor College**

1620 Edward P Smith Dr  
Aberdeen, WA 98520  
(360) 532-9020  
[www.ghc.edu](http://www.ghc.edu)

- Associate's Degree Programs
- Bachelor's Degree Programs
- Distance Learning
- Job Training
- Basic Skills: ESL, GED

## **National Center for Homeless Education at SERVE**

(800) 308-2145  
[www.serve.org/nche](http://www.serve.org/nche)  
[homeless@serve.org](mailto:homeless@serve.org)

**Sound to Harbor Head Start/ECEAP**

[www.soundtoharbor.com](http://www.soundtoharbor.com)

**ECEAP/LTG Elma Center**

502 E Young St  
Elma, WA 98541  
(360) 482-3201

**ESD113 Sound to Harbor Head Start @ Washington Elementary**

3003 Cherry St  
Hoquiam, WA 98550  
(360) 533-5420

**Hopkins Early Childhood Center Head Start/ECEAP @Harbor High**

1313 Pacific Avenue  
Aberdeen, WA 98520

**Sound to Harbor Head Start/ECEAP**

308 W King St  
Aberdeen, WA 98520  
(360) 532-5001

**South Puget Sound Community College**

2011 Mottman Rd SW  
Olympia, WA 98512  
(360) 754-7711

[www.spscc.ctc.edu](http://www.spscc.ctc.edu)

- Associate's Degree Programs
- Adult Education, GED
- Professional & Technical

**St Martin's University**

500 Abbey Way SE  
Lacey, WA 98503  
(360) 491-4700

[www.stmartin.edu](http://www.stmartin.edu)

Private/Catholic University

- Associate's Degree Programs
- Bachelor's Degree Programs
- Master's Degree Programs

**Superintendent of Public Instruction**

Old Capitol Building  
600 Washington St SE  
Olympia, WA 98504  
(360) 725-6075

[www.k12.wa.us](http://www.k12.wa.us)

**US Department of Education**

(800) 433-3243

[www.studentaid.ed.gov/redirects/federal-studentaid-ed-gov](http://www.studentaid.ed.gov/redirects/federal-studentaid-ed-gov)

Information on filing for federal financial aid for college.

**Washington Higher Education Coordinating Board**

P.O. Box 43430

Olympia, WA 98504

(360) 753-7846

Passport to College Promise Scholarship opportunities, housing support and special consideration for state need grants and work study. Eligible students spent at least one year in foster care after age 16, left foster care on or after 1/1/07, will enroll at least half-time in college by age 21 and have not yet earned a bachelor's or professional degree.

**Other Alternative Education****Aberdeen All-Star Driving School**

100 South I St.

Aberdeen, WA 98520

(360) 612-3529

[Aberdeenallstardriving.com](http://Aberdeenallstardriving.com)

**Cascade Driving School**

301 South F St.

Aberdeen, WA 98520

(360) 532-1423

[Cascadedriving.com](http://Cascadedriving.com)

**AARP Driver Safety Classes**

(800) 350-7025

[www.aarpdriversafety.org](http://www.aarpdriversafety.org)

Driver Safety Classes In-person and online driver safety classes for drivers over age 50.

**National Migrant Education Hotline**

(800) 234-8848

Migrant families can call when they arrive in a new area. Will be enrolled in migrant program. Helps with transfer of school records and school enrollment.



**SPECIAL EDUCATION****Center for Children with Special Needs**

Box 5371, CW8-6  
Seattle, WA 98145-5005  
(206)987-3736

**[cshch.org](http://cshch.org)**

Information to families and health care providers; research and evaluation that impact policy development, quality of care, education and family partnerships in health care.

**Washington PAVE**

6316 So. 12th St.  
Tacoma, WA, 98465  
(253) 565-2266

Family-to-Family Health Information Center: Serves children with special healthcare needs ages birth to 18 years. Provides individual information on advocating for children in the healthcare system and referrals to resources that are available in Washington State that provide information on healthcare.

Parent Training Information Center: Provides training, resources, and support for parents in Washington State whose children have special learning needs. Staff and volunteers work one-to-one or provide workshops on various aspects of obtaining appropriate services in the public-school system.

Response to Intervention (RTI): Used by schools to identify students who are struggling in school and get them support. All students are screened by teachers to see if they need help in an area. Teachers monitor students' progress and adjust interventions based on individual needs. Three levels of interventions that increase in intensity.

Specialized Training of Military Parents (STOMP): Information and training regarding special education and other resources available to military families of children with disabilities.

**School Districts in Grays Harbor County, Washington**

**Aberdeen School District**

216 North G Street,  
Aberdeen, Washington 98520  
(360) 538-2000

**Asd5.org**

<p><b>Aberdeen High School</b> 410 North G Street Aberdeen, WA 98520 (360) 538-2040</p>	<p><b>Central Park Elementary</b> 601 School Road Aberdeen, WA 98520 (360) 538-2170</p>
<p><b>Harbor Learning Center</b> 300 North Williams Aberdeen, WA 98520 (360) 538-2180</p>	<p><b>Mc Dermoth Elementary</b> 409 North K Street Aberdeen, WA 98520 (360) 538-2120</p>
<p><b>Harbor Learning Center</b> 300 North Williams Aberdeen, WA 98520 (360) 538-2180</p>	<p><b>Robert Gray Elementary</b> 1516 North B Street Aberdeen, WA 98520 (360) 538-2140</p>
<p><b>Miller Junior High School</b> 100 East Lindstrom Street Aberdeen, WA 98520 (360) 538-2100</p>	<p><b>Stevens Elementary</b> 301 South Farragut St Aberdeen, WA 98520 (360) 538-2150</p>
<p><b>A.J. West Elementary</b> 1801 Bay Avenue Aberdeen, WA 98520 (360) 538-2130</p>	<p><b>Hopkins Early Childhood Center</b> 1313 Pacific Avenue Aberdeen, WA 98520 (360) 538-2190</p>

**Cosmopolis School District**

PO Box 479  
1439 4th St  
Cosmopolis, WA 98537  
(360) 532-7181

**<https://www.cosmopolisschool.com/>**

**Elma School District Office**

1235 Monte-Elma Road  
 Elma, WA 98541  
 (360) 482-2822

<https://www.eagles.edu/>

<p>Elma Elementary School          1235 Monte-Elma Road          Elma, WA 98541          (360) 482-2632</p>	<p>Elma high School          1011 W Main          Elma, WA 98541          (360) 482-3121</p>
<p>Elma Middle School          805 West Main          Elma, WA 98541          (360) 482-2237</p>	<p>East Grays Harbor High School          705 Waldrip Street          Elma, WA 98541          (360) 482-5086</p>

**Grays Harbor Seventh-Day Adventist School**

1216 State Route 12  
 Montesano, WA 98583  
 (360) 249-1115

<https://www.ghacschool.org/>

**Hoquiam School District**

325 West Chenault Avenue  
 Hoquiam, WA 98550  
 (360) 538-8200

[Hoquiam.net](http://Hoquiam.net)

<p><b>Highschool</b>          501 W. Emerson          Hoquiam, WA 98550          (360) 538-8210</p>	<p><b>Lincoln Elementary</b>          700 Wood Ave.          Hoquiam, WA 98550          (360) 538-8250</p>
<p><b>Middle School</b>          200 Spencer Street          Hoquiam, WA 98550          (360) 538-8220</p>	<p><b>Emerson Elementary</b>          101 W. Emerson          Hoquiam, WA 98550          (360) 538-8240</p>
<p><b>Central Elementary</b>          310 Simpson Ave.          Hoquiam, WA 98550          (360) 538-8230</p>	

**Montesano School District**

District Office  
 303 N. Church St  
 Montesano, WA 98563  
 (360) 249-3942  
[www.monte.webnet.edu](http://www.monte.webnet.edu)

Beacon Elementary 1717 Beacon Ave E Montesano, WA 98563 (360) 249-4528	Montesano Jr/SR High 303 N Church Montesano, WA 98563 (360) 249-4041
Simpson Elementary 519 W Simpson Montesano, WA 98563 360) 249-4331	

**North Beach School District**

P.O. Box 159  
 336 State Route 115  
 Ocean Shores, WA 98569  
 (360) 289-2447  
<https://www.northbeachschools.org/>

North Beach Middle/Senior High School 336 State Route 11 Ocean Shores, WA 98569 (360) 289-3888	Pacific Beach Elementary School 11 4th St. Pacific Beach, WA 98571 (360) 276-4512
Ocean Shores Elementary School 300 Mt. Olympus Ave Ocean Shores, WA 98569 (360) 289-2147	

**Oakville School District**

103 School St.  
 Oakville, WA 98568  
 (360) 273-0171  
<https://www.oakvilleschools.org/>

Oakville Elementary 103 School St Oakville, WA 98568 (360) 273-5946	Oakville High 103 School St Oakville, WA 98568 (360) 273-8229
--	--

**Ocosta School District**

2580 South Montesano Street  
Westport, WA 98595  
(360) 268-9125

<https://www.ocosta.k12.wa.us/>

<p>Ocosta Elementary 2580 Montesano St South Westport, WA 98595 (360) 268-9125</p>	<p>Ocosta Jr-Sr High 2580 Montesano St South Westport, WA 98595 (360) 268-9125</p>
--	--

**Lake Quinault School District**

PO Box 38  
6130 Hwy 101  
Amanda Park, WA. 98526

<https://lakequinaultschools.org/>

**Mary M Knight School District**

2987 W. Matlock-Brady Rd.  
Elma, WA 98541  
(360) 426-6767

<https://www.marymknight.com/>

**McCleary School District**

611 South Main Street  
McCleary, WA 98557  
(360) 495-3204

<http://mccleary.wednet.edu/>

**North River School District**

2867 North River Road  
Cosmopolis, WA 98537  
(360) 532-3079

<http://www.nr.k12.wa.us/>

**Satsop School District**

PO Box 96  
853 Monte Elma Rd.  
Satsop, WA 98583  
(360) 482-5330

<http://www.satsopschool.org/>

**St. Mary's (Private)**

518 N 'H' Street  
Aberdeen, WA 98520  
(360) 532-1209

[www.saintmaryschool.org/](http://www.saintmaryschool.org/)

**Taholah School District**

600 Chitwhin Drive  
Taholah, WA 98587  
(360) 276-4780

<https://taholah.org/>

**Twin Harbors Skills Center**

410 North G Street  
Aberdeen, WA 98520  
(360) 538-2039

**Wishkah Valley School District**

4640 Wishkah Road  
Aberdeen, WA 98520  
(360) 532-3128

<https://www.wishkah.org/>

# Employment

## **Coastal Supported Employment**

117 E 3rd St  
Aberdeen, WA 98520  
(360) 532-4900  
Positions & on-site childcare  
\*Servicios en Espanol disponible

## **Express Employment Professionals**

601 W. Wishkah St.  
Aberdeen, WA 98520  
(360) 533-6755  
[www.aberdeenwa.expresspros.com](http://www.aberdeenwa.expresspros.com)

## **Work First (through GH College)**

1620 Edward P Smith Dr.  
Aberdeen, WA 98520  
(360) 532-9020  
[www.ghc.edu/student-services/workforce/workfirst-program](http://www.ghc.edu/student-services/workforce/workfirst-program)

The Grays Harbor College WorkFirst Program and its community partners assist parents who currently receive Temporary Assistance for Needy Families (TANF) prepare for and find employment. The WorkFirst grant may be able to fund the following expenses for Pre-College / Basic Skills classes, High School Completion classes, short-term training, and eligible professional/technical programs. Tuition-Books-Fees

## **Work Source Grays Harbor**

415 W Wishkah  
Suite 2D  
Aberdeen, WA 98520  
(360) 538-2350  
[www.go2worksource.com](http://www.go2worksource.com)

\*Employment services to people with disabilities and misplaced workers. Unemployment insurance, VA benefits & employment readiness. Youth resource center & computers available.

\*Servicios en Espanol disponible

## **Out of county**

### **Washington Initiative for Supported Employment**

100 S. King St.  
#260  
Seattle, WA 98188  
(206) 343-9330  
[www.gowise.org](http://www.gowise.org)

# Family Services

## **Families in Transition (FIT)**

(360) 538-2253

(360) 580-6740

\* Housing needs of families

## **Father's Network**

(425) 653-4286

[www.fathersnetwork.org](http://www.fathersnetwork.org)

## **Family Planning (GH Health Dept)**

(360) 532-8631

2109 Sumner Ave.

Aberdeen, WA 98520

\* Quality, low-cost health care services, Medical coupons accepted.

\* Servicios en Espanol disponible

## **Grays Harbor Housing Authority**

602 E 1st Street

Aberdeen, WA 98520

(360) 532-0570

[www.awha.org](http://www.awha.org)

\* Spanish translators accessible

\*Low income, subsidized housing.

## **NeighborWorks of Grays Harbor**

710 E Market Aberdeen

(360) 533-7828

(866) 533-7828

[anhs@aberdeen-nhs.com](mailto:anhs@aberdeen-nhs.com)

\*Provides wide variety of housing services to help people be home owners

## **Parents as Teachers Program**

(360) 532-8631

Home visiting program through the Grays Harbor County Health Dept.

## **STOMP/PAVE**

(800) 572-7368

<https://wapave.org/>

PAVE provides support, training, information and resources to empower and give voice to individuals, youth and families impacted by disabilities.



**Turning Pointe Domestic Violence Services**

Advocacy based counseling, outreach & shelter for domestic violence survivors & their children. 1-877-923-1212

business line:(360) 426-1216

Crisis Line: (360) 432-1212

**[www.turningpointe.org](http://www.turningpointe.org)**

Services in Espanol.

**PCAP-Parent Child Assistance Program**

(360) 249-0005

# Fire Stations

Aberdeen Fire Department 700 W Market St Aberdeen, WA 98520 (360) 532-1254	Aberdeen Fire Station 700 US-101 Aberdeen, WA 98520
Artic Fire Station # 1 15 Artic Rd Cosmopolis, WA 98537 (360) 532-7575	Copalis Crossing Fire Station 1617 Ocean Beach Rd Copalis Crossing, WA 98536 (360) 289-4266
Cosmopolis City Fire Department 111 D St Aberdeen, WA 98520 (360) 533-8765	Elma Fire Department 112 N 2nd St Elma, WA 98541 (360) 482-2812
Grayland Fire Department 1785 WA-105 Grayland, WA 98547 (360) 267-4126	Hoquiam Fire Station 517 Ontario St Hoquiam, WA 98550 (360) 532-3324
Hoquiam Fire Station 615 8th St Hoquiam, WA 98550 (360) 538-3960	Lake Quinault Volunteer Fire Department 6108 US-101 Amanda Park, WA 98526
McCleary Fire Station 100 Simpson Ave McCleary, WA 98557 (360) 495-3667	Montesano 310 Pioneer Ave E Montesano, WA 98563 (360) 249-4851
North Cove Fire Department 2829 WA-105 Grayland, WA 98547 (360) 267-3970	North River Fire Station #2 1661 N River Rd Cosmopolis, WA 98537 (360) 532-7575
Ocean City Fire Station 2670 WA-109 Ocean City, WA 98569 (360) 289-4338	Ocean Shores Fire Department 585 Point Brown Ave NE Ocean Shores, WA 98569 (360) 289-3611
Ocosta Fire District 119 Johns River Rd Aberdeen, WA 98520 (360) 648-2240	Satsop 1003 Monte Elma Rd Satsop, WA 98583 (360) 482-4903
Westport Fire Station 170 W Spokane Ave Westport, WA 98595 (360) 268-9235	

<p>Cloquallum Fire Shed Satsop-Cloquallum Rd Elma, WA 98541</p>	<p>Elma Hicklin Road Fire Shed 462 Elma Hicklin Rd W McCleary, WA 98557</p>
<p>Mox Chehalis Fire Shed Mox Chehalis Rd McCleary, WA 98557</p>	
<p>Fire District 1 Station 1 108 Main St Oakville, WA 98568 (360) 273-6645</p>	<p>Fire District 1 Station 2 1880 S Bank Rd Oakville, WA 98568</p>
<p>Fire District 2 station 2-2 8 Firestation Rd, Montesano, WA 98563 (360) 532-6050</p>	<p>Fire Station 33 1393 Wynoochee Valley Rd Montesano, WA 98563 (360) 249-2733</p>
<p>Fire District 5 428 Stamper Rd Elma, WA 98541 (360) 482-3143</p>	<p>Port Fire Station 52 3 Porter Creek Rd Elma, WA 98541 (360) 482-3771</p>
<p>Fire District 7 701 Copalis Beach Rd Copalis Beach, WA 98535 (360) 289-7935</p>	<p>Fire District 8 Pacific Beach 4576 WA-109 Pacific Beach, WA 98571 (360) 276-4807</p>

# Food & Clothing Banks

<p><b>Aberdeen Baptist Church Food Bank</b>  2733 Aberdeen Ave  Aberdeen, WA 98520  (360) 533-1572  <i>1st and 3rd Saturday 11:00am – 1:00pm</i></p>	<p><b>East County Food Bank</b>  106 W. Main Street  Elma, WA 98541  (360) 482-4728  <i>Monday 1:00pm – 4:00pm</i></p>
<p><b>Aberdeen Community Food Bank</b>  420 N Broadway  Aberdeen, WA 98520  (360) 533-1088  <i>Tue &amp; Wed 3-5pm</i></p>	<p><b>Food Distribution Center</b>  Salvation Army- Grays Harbor  118 W Wishkah St  Aberdeen, WA 98520  (360) 533-1062</p>
<p><b>Aberdeen Food Bank</b>  2120 Commerce St.  Aberdeen, WA 98520  Off Wooding, across from Home Depot  <a href="https://www.facebook.com/aberndeenfoodbank/">facebook.com/aberndeenfoodbank/</a>  <i>Tuesday 3:00pm – 5:00pm</i></p>	<p><b>Foursquare Church – The Lord’s Pantry</b>  4800 Central Park Drive  Aberdeen, WA 98520  (360) 538-0111  <i>2nd and 4th Thursday 10:00am – 12:00pm</i></p>
<p><b>B.A.S.H. (Biker’s Against Statewide Hunger)</b>  427 W. Main Street  Elma, WA 98541  (360) 861-8062  <a href="http://www.SetFreeElma.org">www.SetFreeElma.org</a>  <i>Monday, Wednesday, and Friday 3:00pm – 5:00pm</i></p>	<p><b>Friendship House Clothing Bank -</b>  513 N ‘G’ Street  Aberdeen, WA 98520  (360) 533-2221  <i>Clothing bank Wed &amp; Fri 12-2 pm.</i>  <i>*Emergency housing for single women&amp; mothers w/small children</i></p>
<p><b>CCS/Feed the Hungry</b>  410 N. H Street  Aberdeen, WA 98520  (360) 637-8563  <i>Monday – Friday 12:00pm – 1:00pm</i></p>	<p><b>Grays Harbor Community Clothing Bank</b>  301 N ‘G’ Street  Aberdeen, WA 98520  (360) 532-1420</p>
<p><b>Copalis Church Community Food Bank</b>  3137 State Route 109  Copalis Beach, WA 98535  (360) 289-2233  <i>Wednesday 1:30pm – 5:30pm</i></p>	<p><b>Harbor Landing</b>  Grays Harbor College 500 building (gym)  1620 Edward P. Smith Drive  Aberdeen, WA 98520  (360) 538-4243  <a href="https://www.ghc.edu/studentlife/harbor-landing-food-pantry">https://www.ghc.edu/studentlife/harbor-landing-food-pantry</a>  <i>Tuesday 10:00am – 2:00pm / Days/hours may vary during college breaks</i></p>
<p><b>Assembly of God (Clothes &amp; Food)</b>  23 Mox Chehalis Rd.  Elma, WA 98541</p>	<p><b>Hoquiam Food &amp; Clothing Bank</b>  720 K Street  Hoquiam, WA 98550  (360) 533-4909  <i>Monday and Wednesday 12:00pm – 2:00pm</i></p>

<p><b>Humptulips Food Bank</b> 32 Mcaffee Road Humptulips, WA 98552 (360) 987-2361 <i>3rd Wednesday 12:00pm – 3:00pm</i></p>	<p><b>McCleary Food Bank</b> 100 3rd South Street McCleary, WA 98557 <i>2nd and 4th Monday 8:30-11:00am</i></p>
<p><b>Labor of Love (Clothing Bank)</b> 207 N 3rd St Elma, WA 98541 (360) 495-4848 Tues &amp; Thurs</p>	<p><b>Montesano Food Bank</b> 213 W. Spruce Street Montesano, WA 98563 (360) 249-5374 <i>First four Fridays of the month 1:00pm – 3:00pm</i></p>
<p><b>Seventh-day Adventist Church Food Bank</b> 3101 Cherry Street Hoquiam, WA 98550 (360) 537-9133 <i>Thursday 10:00am – 2:00pm</i></p>	<p><b>Quinault Food Bank</b> 31 Burn Road Neilton, WA 98566 <i>1st and 3rd Tuesday 1:00-4:00pm</i></p>
<p><b>Malone Food Bank</b> 25 Mox Chehalis Road Malone, WA 98559 (360) 482-2329 <i>2nd and last Wednesday 7:00am – 9:00am</i></p>	<p><b>Ocean Shores Food Bank</b> 846 Anchor Ave. NW Ocean Shores, WA 98569 (360) 289-2171 <i>1st and 3rd Thursday 10:00am – 5:00pm</i></p>
<p><b>Pacific Beach – Mobile Food Bank</b> 4576 WA-109 (Fire Station) Pacific Beach, WA 98571 (360) 532-6315 <i>3rd Tuesday 9:00am – 11:00am</i></p>	<p><b>Taholah – Mobile Food Bank</b> 409 Cummex St (Senior Center) Taholah, WA 98587 (360) 532-6315 <i>3rd Tuesday 12:00pm – 2:00pm</i></p>
<p><b>South Beach Christian Outreach</b> Meal Program, Food and Clothing Bank 617 S Forrest St. Westport, WA 98595 (360) 268-1455 <i>Tuesday 12:00pm – 2:00pm</i></p>	<p><b>South Beach Food Bank</b> 314 N. Broadway Westport, WA 98595 <i>2nd and 4th Thursday 9:00am – 11:00am</i></p>
<p><b>Salvation Army</b> 120 W. Wishkah Street Aberdeen, WA 98520 (360) 533-1062 <i>Tuesday and Thursday 10:00am – 11:30am &amp; 1:00pm – 3:00pm</i></p>	<p><b>St. Mary's Catholic Church</b> 410 North H St. Aberdeen WA 98520 360-637-8563 <i>Monday thru Friday 12:00pm</i></p>
<p><b>Union Gospel Mission</b> 405 E Heron ST Aberdeen, WA 98520 (360) 533-1064 <i>* Food Distribution M-F Three meals - 7am, noon and 7pm Weekends 2 meals: Saturday @ 10:30 am &amp; 5 pm * Sunday @ 7:30 AM &amp; 4 pm</i></p>	

# Government Officials and Programs

Voter Legislature Information Hotline 800-562-6000

## Elected Officials

<p><b>President /Vice President</b> 1600 Pennsylvania Ave. Washington D.C. 20510 (202) 456-1414</p>	<p><b>Governor</b> PO Box 40002 Olympia, WA 98504 (360) 902-4111 or (360) 753-6780</p>
<p><b>Secretary of State</b> PO Box 40220 Olympia, WA 98504 (360) 902-4151</p>	<p><b>State Attorney General</b> 1125 Washington St. SE PO Box 40100 Olympia, WA 98504 (360) 753-6200</p>
<p><b>State Treasurer</b> PO Box 40200 Olympia, WA 98504 (360) 902-9000</p>	<p><b>State Auditor</b> PO Box 40021 Olympia, WA 98504 (360) 902-0370</p>
<p><b>Senator</b> District Office: 2988 Jackson Federal Bldg. 915 2nd Ave Seattle, WA 98174 (206) 553-5545</p>	<p><b>Senator</b> District Office: 915 2nd Ave, Suite 3206 Seattle, WA 98174 (206) 220-6400</p>
<p><b>6th Congressional District: Olympic Peninsula, Port Angeles, Tacoma, Bremerton</b> District Office: 1717 Pacific Ave Suite 806 Tacoma, WA 98402 (253) 272-3515</p>	<p><b>10th Congressional District: Olympia, Lakewood</b> District Office: 420 College Street SE Lacey, WA 98503 (360) 459-8514</p>

**19th Legislative District: Pacific, Wahkiakum, S Grays Harbor, Cowlitz**

<b>Representatives</b> 421 John O'Brien Bldg. PO Box 40600 Olympia, WA 98504 (360) 786-7870	<b>Senator</b> 239 John A Cherberg Bldg. PO Box 40419 Olympia, WA 98504 (360) 786-7636
---	--

**24th Legislative District: Clallam, Jefferson, N Grays Harbor**

<b>Representatives</b> PO Box 40600 Olympia, WA 98504 (360) 786-7934 (360) 786-7916	<b>Senator</b> 411 Legislative Bldg. PO Box 40424 Olympia, WA 98504 (360) 786-7646
---	--

**35th Legislative District: Mason, Parts of Kitsap, Thurston, Grays Harbor**

<b>Representatives</b> PO Box 40600 Olympia, WA 98504 (360) 786-7966 (360) 786-7902	<b>Senator</b> 412 Legislative Bldg. PO Box 40435 Olympia, WA 98504 (360) 786-7668
---	--

**County Agencies**

<b>G H County Auditor Auto License</b> Vehicle & Vessel Registration & Licensing 100 W Broadway Suite 2 Montesano, WA 98563 (360) 249-4232	<b>GH County Public Health &amp; Social Services Department</b> 2109 Sumner Ave Aberdeen, WA 98520 (360) 532-8631 www.ghphs.org *Servicios en Español disponible
<b>Grays Harbor Chamber of Commerce</b> 506 Duffy St Aberdeen, WA 98520 (800) 321-1924 www.graysharbor.org	

**State Agencies**

<b>Driver's License Examining Office</b> WA Dept of Licensing 719 8th Street Hoquiam, WA 98550 (360) 533-9330	<b>Hoquiam License Agency</b> 2616 Sumner Ave Hoquiam, WA 98550 (360) 533-4333
<b>Social Security Office</b> 820 Simpson Ave Hoquiam, WA 98550 (800) 772-1213 * M-F * Servicios en Español disponible	

**STATE OF WASHINGTON TOLL FREE HOTLINE NUMBERS**

**Access Mobility Systems (AMS)** (866) 868-9694

\*Wheelchair, accessible vans, conversions, drive aids, scooters, wheelchairs, grab bars etc.

**Adoption Counseling & Referral** (800) Baby-Due (222-9383)

Counseling & referral for birth and Adoptive parents through Catholic Community Services.

**AIDS HOTLINE** (800) 448-0440 (National)

[www.aidsinfo.nih.gov](http://www.aidsinfo.nih.gov)

**Auto Safety Hotline** (800) 424-9393

**Cancer Hotline** (800) 422-4453 Cancer Information

**Chemical Referral Center** (800) 262-8200

[www.hhs.gov](http://www.hhs.gov)

(Safety information on chemicals, household products & disposal of dangerous chemicals.)

**Child Abuse Hotline** (800) 562-5624 24-hour hotline

**Child Family Health Programs** (800) 841-1410

\*WIC & First Steps Info

**Child Find of America**

(800) I-AM-LOST (800) 426-5678 \*For parents of runaway children

(800) A-WAY-OUT (800) 292-9688 \*For Parental Abduction mediation

**Child Help USA** (800) 422-4453 Volunteers & Donations accepted

\*National child abuse hotline. Information & Referral to emergency counselors for abused children.

**Columbia Legal Services** (360) 943-6260

Free legal counseling for seniors. Offered for Civil issues only. Call for eligibility.

**Consumer Resource Center / Attorney General** (360) 753-6200 M-F 9-5 pm

Provides info & mediation of disputes to consumer's business.

**Department Services for the Blind** (800) 552-7103

State wide resources



**Deployment Health Clinical Center** (800) 796-9699

**Diabetes Hotline** (800) 628-8808 M-F 9-5 pm

**Domestic Violence Center of Grays Harbor** (360) 538-0733 Crisis Line 800-799-7233

**Domestic Violence Hotline** – 800-562-6025 - State 800-799-7233 - National

**Easter Seals Society of WA** (800) 678-5708

[www.easterseals.org](http://www.easterseals.org)

**Fair Housing & Equal Opportunity Hotline** (800) 877-0246

[www.hud.gov](http://www.hud.gov)

**Family Food Hotline** (888) 436-6392

**Family Helpline** (800) 932-4673 24 Hours

\*Trained volunteers assist parents w/parenting issues. No fee.

**Family Health Hotline** (800) 322-2588

**Gamblers Anonymous** - 855-222-5542 (for area code 360)

[www.gamblersanonymous.org](http://www.gamblersanonymous.org)

**Healthcare Authority** (800) 562-3022

**Internal Revenue Service (IRS)** (800) 829-1040

[www.irs.gov](http://www.irs.gov)

**Location Service** – 1-800-426-5678

[www.childfindofamerica.org](http://www.childfindofamerica.org)

**National Alcohol & Drug Treatment Routing** (800) 662-HELP (4357)

\*Treatment options, literature, information & referral.

**Nursing Home Residents Neglect Hotline** (800) 562-6078

\*Anonymous reports of abuse or neglect occurring in nursing homes, assisted living facilities & adult homes for people over 18.

**National Center for Missing & Exploited Children** (800) 843-5678

**Office of Civil Rights** (800) 368-1019

\*Part of DSHS that investigates discrimination by departments within DSHS.

**Olympic Area on Aging**– 800-801-0060 Local- (360) 532-0520

**Paratransit Services** - (800) 846-5438

\*Medical transport broker under contract with WA State DSHS.

**Parent Help** – 1(800) 716-3468

for Dads & Moms parenting apart- free & confidential telephone assistance. [www.parenthelp-ny.org](http://www.parenthelp-ny.org)

**Parents are Vital in Education (P.A.V.E.)** (800) 572-7368

**Poison Control Center** (800) 222-1222 \*If life threatening - call 911.

\*Before calling have brand name, amount & what was taken & how, symptoms, age, weight & Dr name

**Relatives of Parents Program (RAPP)** (800) 932-4673 (Family Help Line)

**Runaway Safe Line** (800) 621-4000

\*Adolescent crisis service & suicide hotline for runaways.

**Sexual Health Association** (800) 227-8922

**Speech to Speech** (877) 833-6341 24 hours

\*Free access for people with speech disabilities.

**Veterans Affairs Info & Referral** (800) 562-2308

**Veterans Independent Enterprises of WA** (800) 748-6856

\*For recovering veterans

**Victim Support Services** (800) 346-7555 24 Hr.

[www.fnfvcv.org](http://www.fnfvcv.org)

**Voter Legislature Information Hotline** (800) 562-6000 (during session)

**WA Institutional Resources for the Visually Impaired** (800) 562-4176

**WA State Dept. of Health** (800) 525-0127

**WA State Dept. of Veteran Affairs** (800) 562-2308

\*Provides info on issues associated w/benefits.

**WA Telephone Assistance Program** (360) 664-1160

**WA WIC Nutrition Program** (800) 841-1410

# Healthcare

## Addiction services

### **Alano Club (Alcoholics Anonymous)**

District 21 is comprised of AA Groups in and around the Grays Harbor and Pacific County coastal region. We are glad you're here. The purpose of this site is to make sure you can find your way to a meeting within our district, or guide you to the helping hand of AA close to you.

### **Aberdeen**

823 W Heron St  
Aberdeen, WA 98520

### **St Andrews Church**

400 E 1st St  
Aberdeen, WA 98520

### **Montesano**

**St Marks Church**  
124 N Sylvia St  
Montesano, WA 98563

### **Faith Lutheran Church**

1296 Monte Elma Rd  
Elma, WA 98541

### **North Beach**

873 Point Brown Ave NW  
Ocean Shores, WA 98569

## **Behavioral Health Resources –Adult and Children's Services**

### **Hoquiam**

205 8th St.  
Hoquiam, WA 98550  
(360) 532-8629 or (800) 654-3837

### **Elma**

575 E Main Street  
Suite C  
Elma, WA 98541  
(360) 482-5358

Recovery-Integrated Treatment Services (RITS) is a new, comprehensive program provided by BHR and led by a RITS Team that includes five clinicians and case managers who specialize in mental health and substance use disorders. It is for clients who are experiencing significant mental health and substance use issues. Some of the highlights of this new program include:

- Intensive case management and substance use services both in the community and in the office
- Individualized services that meet the unique needs of each participant
- Intensive outreach provided as needed to those who need additional support engaging in services

**Blue River Recovery**

2380 Southbank Rd  
 Oakville, WA 98568  
 (360) 464-9860  
 Drug Addiction Treatment Center in Oakville

**Crisis Clinic of Grays Harbor**

(360) 532-HELP (4357) for Hoquiam area  
 (800) 685-6556 (East county and outside)  
 24 hours a day, 7 days a week.

**Eugenia Center**

501 N. Broadway St.  
 Aberdeen, WA 98520  
 Monday-Friday, 9:00am - 5:30pm  
 (360) 660-1011

Our mission is to lead in providing quality care that is accessible and to support the dedicated professionals who make caring for the clients we serve their number one priority.

At Eugenia Center, we serve every individual with dignity and respect and make every effort to provide services and resources to all in need, regardless of their social or economic situation. Eugenia Center offers prevention, intervention and treatment services consistent with the principles of the Twelve-Step fellowships. The services are provided along a continuum of care consistent with the needs of each individual.

Maintaining a climate of optimism, enthusiasm, and shared accountability, Eugenia Center embodies a sense of purpose, a commitment to wellness and a dedication to continual improvement as it seeks to share the joys of recovery with those it serves.

Eugenia Center ensures the provision of an effective treatment process including assessment, treatment planning, documentation of patient progress, treatment plan reviews and updates, patient compliance reports, continuing care and discharge planning, and conducting individual and group counseling.

Our vision is to be recognized as a leader in comprehensive healthcare, challenging and inspiring our clients, families, and our employees to reach their full potential and purpose.

**Services Include:**

- Drug abuse counseling (individual and group)
- Group counseling every day
- Random drug testing
- Drug abuse education
- Case management
- Case management referrals
- Self-esteem support groups
- Court reports (as needed)
- Sober transport
- Sober coaching
- Trauma Recovery Classes
- Mental health services
- Mental health referral coordination

**Grays Harbor Comprehensive Treatment Center**

516 East 1st Street  
 Aberdeen, WA 98520  
 (360) 743-4310

[Westernwashingtonctc.com](http://Westernwashingtonctc.com)

**Business Hours:**

Mon-Fri: 5:30am-2pm

Sat: 6am-9am

Sun: Closed

Grays Harbor Comprehensive Treatment Center provides personalized opioid addiction treatment for adults. Grays Harbor CTC is an ideal outpatient treatment environment for men and women, age 18 and above, who have become dependent upon prescription painkillers, morphine, heroin, or other opioids. Services at Grays Harbor CTC include medication-assisted treatment, individual therapy, and group therapy. Adult men and women who choose Grays Harbor CTC will receive the focused care they need to end their opioid use and begin their recovery journey.

**Lifeline Connections**

311 S. I St.  
 Aberdeen, WA 98520  
 (360) 787-9319

<https://lifelineconnections.org/locations/aberdeen-office/>

**Offered Services**

Start on your recovery journey today with Lifeline Connections' highly accredited mental health and substance use disorder programs. Our dedicated professional team is ready to meet with you in person or via telehealth as they support you on your journey to wellness.

- Case Management
- Medication Management
- Individual Therapy
- MAR (Medication Assisted Recovery)
- Substance Use Disorder (SUD)
- Problem Gambling Treatment

**Crystal Meth Anonymous**

First Presbyterian Church  
 420 North Broadway  
 Aberdeen, WA 98520  
 (360) 581-8310

**Narcotics Anonymous**

[Gha-na.org](http://Gha-na.org)

**Aberdeen**

823 W Heron St  
 Aberdeen, WA 98520

**North Beach**

873 Point Brown Ave NW  
 Ocean Shores, WA 98569

**Northwest Indian Treatment Center**

P.O. Box 477  
 308 E. Young  
 Elma, WA 98541  
 (360) 482-2674

Using approaches grounded in evidence, experience and a deep understanding of culture, we treat trauma first—this unique approach of addressing historical, systematic, and individual trauma is the center of NWITC’s strength and success. Using culturally adapted best practices, the NWITC provides clinical, cultural, and support services to clients during the 45-day treatment program, intensive recovery support with alumni after treatment, and recovery coach programming in tribal communities. Welcomed, envisioned and collaboratively implemented by tribal leaders who felt the urgent need for such a facility, the NWITC was developed to serve tribal people who have addictions and unresolved grief and trauma in a calming location and supportive environment that is centered on tribal people and culture. At the heart of the NWITC development was immersive, culturally based treatment and intensive content to address the roots of client trauma to help clients reconnect to their identities as Native people and move toward stability and wellness.

**Quinault Substance Abuse**

1505 Kla-Ook-Wa Drive  
 Taholah, WA 98587  
 (360) 276-4405

<https://sobernation.com/listing/quinault-indian-nation-chemical-dependency-program-taholah-wa/>

Cognitive/behavioral therapy, Dialectical behavioral therapy, Substance abuse counseling approach, Trauma-related counseling, Rational emotive behavioral therapy

**Sunrise Counseling**

1200 N Montesano Ave  
 # 105  
 Westport, WA 98595  
 (360) 268-9051

**Social Treatment Opportunity Programs (STOP)**

114 north Park St  
 Aberdeen, WA 98520  
 (360) 533-4997

<http://www.stopwa.com>

We will help you find the best addiction treatment solution.  
 Talk to a caring expert, calls are free and fully confidential

**Trinity Behavioral Health**

138 S 1st St  
 STE 6  
 Montesano WA, 98563  
 (360) 964-4138

- Full Evaluation
- DUI Deferred Prosecution Evaluation
- Family Law Evaluation
- Alcohol and Other Drug Information School (ADIS)
- Intensive Outpatient Groups
- Relapse Prevention/Outpatient Groups
- Suboxone Groups
- Individual and Group Counseling

**AIDS/STD Information****Division of Public Health GH Health Department**

2109 Sumner Ave  
 Aberdeen, WA 98520  
 (360) 532-8631  
 AIDS 24-hr hotline 800-458-5231

**Dental Services****Access to Baby & Child Dentistry (ABCD)**

For enrollment & referral information: Aberdeen Health Dept.  
 (360) 532-8631

**Disability Services****Adult Protective Services**

(877) 734-6277

Purpose is to promote, plan, develop and provide long-term care services responsive to the needs of persons with disabilities and the elderly.

**The Arc of Grays Harbor**

P.O. Box 179  
 Aberdeen, WA 98520  
 (360) 537-7000

**[arcgh.org](http://arcgh.org)**

One-stop access to information regarding goods and services related to meeting the needs of those with intellectual and/or developmental disabilities. Provides access to information available to anyone with questions regarding developmental disabilities. Some programs have specific requirements.

**Basics NW (Behavioral and Social Intervention & Consultation Services Northwest)**

8282 28th Court NE  
 Ste. A  
 Lacey, WA 98516  
 (360) 915-6868

**[www.basicnsw.com](http://www.basicnsw.com)**

**Center for Children with Special Needs**

Box 5371, CW8-6  
Seattle, WA 98145-5005  
(206) 987-3736

Provides information to families and healthcare professionals, education and family partnerships in health care. Collaborates with a variety of healthcare organizations, state agencies, and families, to plan and implement programs that improve care and increase access to community resources.

**Developmental Disabilities Administration**

307 E. Robert Bush Dr.  
South Bend, WA  
(360) 875-4244  
(800) 458-3747 Ext. 5  
Employment support for the developmentally disabled, must be a client of DDA.

**Washington PAVE**

6316 So. 12<sup>th</sup> St.  
Tacoma, WA, 98465  
(253) 565-2266  
[wapave.org](http://wapave.org)

Provides training, resources, and support for parents in Washington state whose children have special learning needs. Staff and volunteers work one-to-one or provide workshops on various aspects of obtaining appropriate services in the public-school system.

**Hearing****Avida Audiology & Hearing Care Center**

110 W Market St Suite 101  
Aberdeen  
(360) 637-4437



## **Hospitals**

### **Harbor Regional Health**

915 Anderson Dr  
Aberdeen, WA 98520  
(360) 532-8330

Harbor Regional Health (HRH) Medical Group is a multi-specialty group that offers services such as Internal Medicine, Pediatrics, Family Medicine, Prompt Care, Orthopedics, Urology, General Surgery, Gastroenterology, and OB/GYN. With clinics throughout Grays Harbor County, HRH Medical Group is continuously growing its services to better serve our community.

HRH Medical Group is a subsidiary of Harbor Regional Health, a not-for-profit Public Hospital District that serves over 72,000 residents. HRH Medical Group is committed to patient satisfaction and creating access to quality healthcare seeing 45,000 patient visits a year. Our Physicians and medical staff strive to provide the highest standard of healthcare in a comfortable, safe, convenient, and friendly environment.

### **Summit Pacific Medical Center**

600 E Main St  
Elma, WA 98541  
(360) 346-2222  
Open 24 hours

<https://summitpacificmedicalcenter.org/>

Summit Pacific is a vibrant and expanding public hospital district that operates a Critical Access Hospital with a level IV trauma designation, two rural healthcare clinics and a seven day a week urgent care clinic. Our vision is that “Through Summit Care, we will build the healthiest community in the Nation.” Our hospital is unique due to our size and accessibility. We pride ourselves on our low emergency department wait times and our ability to give patients access to a provider quickly.

- Critical Access Hospital
- 24/7 Emergency Department
- Level II Cardiac Center
- Level III Stroke Center
- Level IV Trauma Care

At Summit Pacific we have the ability to stabilize and provide advanced trauma life support to critically injured patients prior to transferring them to a higher-level trauma center by ambulance or helicopter. Stopping at Summit Pacific for stabilization has been instrumental in saving the lives of heart attack and stroke victims and those with traumatic injuries. Summit Pacific Medical Center also has a Skilled Nursing and Rehabilitation Program (also known as Swing Bed). This program cares for patients who are recently out of surgery or recovering from illness who need a bit more recovery time before returning home. For more information, follow the link on the left.

**Mental Health, Counseling, Support & Treatment Programs****Adult Behavioral Health**

403 W State St  
Aberdeen, WA 98520  
(360) 612-3839

**Alano Club of Aberdeen**

823 W Heron  
Aberdeen, WA 98520  
(360) 532-5971  
\*12 Step meetings, AA

**Alanon & Alateen (Aberdeen)**

[www.wa-al-anon.org](http://www.wa-al-anon.org)  
(360) 532-5971 or (360) 533-9749  
\*People affected by another's addiction.

**Alcohol/Drug Helpline**

(800) 562-1240 \* Servicios en Espanol disponible  
1-800-craving (1-800-272-8464)

**Alcoholics Anonymous (Aberdeen)**

(360) 532-2691 \*Daily meetings Please call for list of times

**Alzheimer's Support Group (360) 533-2277****American Council for the Blind (800) 424-8666**

[www.acb.org](http://www.acb.org)

**Behavioral Health Resources****Hoquiam Clinic**

205 8th St  
Hoquiam, WA 98550  
(360) 236-5328  
(360) 532-8629  
[www.bhr.org](http://www.bhr.org)

**Elma Clinic**

575 E Main St  
Elma, WA 98541  
(360) 482-5358

**Beyond Survival**

313 'I' Street  
Aberdeen M-F 9-5  
(360) 533-9751 or (888) 626-2640  
24 hr. helpline- (888)626-2640  
[www.ghbeyondsurvival.com](http://www.ghbeyondsurvival.com)

\*Services en Espanol disponible \*Provides free sexual assault advocacy, preventive education, information, and referrals.

**Cancer Hotline (800) 433-0464 Cancer information.**

**Cancer Information & Counseling Line**

(800) 813-4673

[info@cancercare.org](mailto:info@cancercare.org)

\*provides professional counseling for patients & those affected by cancer.

**Caregiver Support Group (Alzheimer's)**

**Aberdeen Timberland Regional Library**

(360) 538-2458

**Columbia Wellness**

2700 Simpson Ave

Aberdeen, WA 98520

(360) 423-0203

**Community Integrated Health Services**

618 W Market ST

Aberdeen, WA 98520

(360) 261-6930

**Consejo Mental Health Counseling**

Hispanic Counseling & Referral Services

(206) 461-4880 M-F 8-5 pm

[consejocounseling.org](http://consejocounseling.org)

**Counseling for Survivors of Sexual Assault**

BHR (360) 532-8629 - (800) 654-3837

SeaMar (360) 538-1461

BHR (360) 532-0060

(360) 532-6011

**CrisisChat.org****Domestic Violence Center of G H**

2306 Sumner Ave

Hoquiam, WA 98550

(360) 538-0733 24-hr

\*Provides services for women over 18 & their children, counseling & shelter.

**Grays Harbor Counseling**

110 W Market ST

Aberdeen, WA 98520

(360) 589-0567

**Grays Harbor County Public health & Social Services**

2109 Sumner Ave

Aberdeen, WA 98520

(360) 532-8631

**Grays Harbor Youth Center**

111 E 4th St  
Aberdeen, WA 98520  
(360) 589-3259

24-hr line \*Temporary safe place for teens age 13-17 Meals served, referrals/resources & homework assistance. For troubled teens who need a break from parents due to domestic violence, abuse, neglect, etc.

**Healthy Risk Counseling Center**

(360) 249-2297  
315 W Marcy Ave  
Montesano, WA 98563  
(State Certified) (360) 537-6258 or (877) 688-0734

**Harbor Crest Behavioral Health**

1006 N H St  
Aberdeen, WA 98520  
(360) 537-6258 Intake # (877) 688-0734

**Lifeline Connections**

311 S I St  
Aberdeen, WA 98520  
(360) 787-9319

**Narcotics Anonymous** (360) 589-8620 (Help line)

**National Center for Missing & Exploited Children** (800) 843-5678

**National Parent Helpline** 1(855) 427-2736

**National Suicide Prevention Hotline** (800) 273-8255

**Northwest Indian Treatment Center**

P.O. Box 477  
308 E. Young  
Elma, WA 98541  
(360) 482-2674

The NWITC was developed to serve tribal people who have addictions and unresolved grief and trauma in a calming location and supportive environment that is centered on tribal people and culture.

**Suicide Prevention Hotline (National)** (800) 273-9255 or (800) 273-8255

**Social Treatment Opportunity (STOP)**

**2700 Simpson Avenue Aberdeen**  
(360) 533-4997 or (800) 838-1752  
[www.stopwa.com](http://www.stopwa.com)

**Teen Hot Line (for parents)** (800) 852-8336

**TRANS LIFELINE** (877) 565-8860

[translifeline.org](http://translifeline.org)

**TEXT “TALK” TO 741741**

Free crisis text-line, 24 hours a day

**Trevor Project Lifeline** (866) 488-7386 (trained volunteers)

Text and chat:

[thetrevorproject.org](http://thetrevorproject.org)

**True North at Capital Region ESD 113**

Grays Harbor (360) 533-9749

Pacific County (360) 942-2474 Ext 2141

**Youth at Risk (360) 537-4300**

through the Juvenile court

**Recovery Programs****Washington Prescription Drug Program (WPDP)**

(800) 913-4146 for information or to enroll

[www.rx.wa.gov](http://www.rx.wa.gov)

Savings up to 60% on generic drugs and 20% on brand-name drugs. Most pharmacy chains honor the discount card. Call number above or visit web to find participating pharmacies

**Washington State Insurance Commissioner** (855) 923-4633**American Behavioral Health Systems (ABHS)** (360) 266-5029

Detox center, takes walk-ins and state health insurance.

**Evergreen Treatment Services**

804 Levee St.

Hoquiam, WA 98550

(855) 885-8604 or (360) 209-6339

[evergreentx.org](http://evergreentx.org)

**Olympic Health & Recovery Services**

Designated Crisis Responder

(360) 754-1338 or (800) 270-0041

**Substance Abuse and Mental Health Services Administration (SAMHSA)**

(877) 726-4727

Locate a detox center at

<https://www.samhsa.gov/>

# Housing

## **Aberdeen Neighborhood Housing Services**

710 E Market St  
Aberdeen, WA 98520  
(360) 533-7828

## **Alive Shelter**

(800) 562-6025 -Statewide Multilingual.  
24 Hour Confidential location, shelter for battered women & their young children - medical referrals, legal advocacy, support groups.

## **Grays Harbor Housing Authority**

602 E 1st Street  
Aberdeen, WA 89520  
(360) 532-0570

**[www.awha.org](http://www.awha.org)**

\* Spanish translators accessible  
\*Low income, subsidized housing.

## **Harbor Alternative Living Association**

111 South Wooding St  
Aberdeen, WA 98520  
(360) 538-1374

## **Making Home Affordable**

(888) 995-4673

**[www.makinghomeaffordable.gov](http://www.makinghomeaffordable.gov)**

Home Affordable Modification Program (HAMP) Federal program that saves homeowners money for paying mortgage payments on time each month. Availability based on income level.

## **NeighborWorks of Grays Harbor**

710 E Market  
Aberdeen, WA 98520  
(360) 533-7828  
(866) 533-7828

**[anhs@aberdeem-nhs.com](mailto:anhs@aberdeem-nhs.com)**

\*Provides wide variety of housing services to help people be home owners

## **Quinault Housing Authority**

209 Spruce St  
Taholah, WA 98537  
(360) 276-4320

# Legal Aid/Crisis

**Better Business Bureau of Washington** (206)431-2222

**Columbia Legal Services** (360)943-6260 or (800) 260-6260

*Provide advice only for family law cases*

**CLEAR (Coordinated Legal Education, Advice & Referral)** (888) 201-1014

*Free legal advice for low income individuals*

**CLEAR Seniors** (888) 387-7111

*60 years plus, regardless of income*

**Disability Rights Washington** (800) 562-2702

**Grays Harbor County District Court (Aberdeen)** (360)532-7061

**Grays Harbor County District court (Montesano)** (360)249-3441

**Grays Harbor Courthouse Facilitator** (360) 249-3842

*Servicios en Espanol disponible*

**Grays Harbor Superior Court** (360)249-6381

**Legal Voice** (866)259-7720

*Free legal advice over the phone*

**Northwest Justice Project** (888)201-1014

<https://nwjustice.org/home>

**Northwest Women's Law** (866) 259-7720

*Information and referral line*

**Washington State Attorney General's Office** (800) 692-5082

*Consumer Protection*

**Washington State Bar Association** (800)945-9722

<https://www.wsba.org/>

**Washington Protection and Advocacy** (800)562-2702

# Libraries

<p><b>Aberdeen Timberland Library</b>          121 East Market Street          Aberdeen WA 98520          (360) 533-2360</p>	<p><b>Amanda Park Timberland Library</b>          6118 US Highway 101          Amanda Park WA 98526          (360) 288-2725</p>
<p><b>Elma Timberland Library</b>          118 North First Street          Elma WA 98541          (360) 482-3737</p>	<p><b>Hoquiam Timberland Library</b>          420 7th Street          Hoquiam WA 98550          (360) 532-1710</p>
<p><b>John Spellman Library</b>          Grays Harbor College Campus          1620 Edward P. Smith Dr.          Aberdeen, WA 98520          (360) 538-4050</p>	<p><b>McCleary Timberland Library</b>          121 South 4th Street          McCleary WA 98557          (360) 495-3368</p>
<p><b>Montesano Timberland Library</b>          125 Main Street South          Montesano WA 98563          (360) 249-4211</p>	<p><b>Oakville Timberland Library</b>          204 Main Street          Oakville WA 98568          (360) 273-5305</p>
<p><b>Ocean Shores Library</b>          573 Pt. Brown Ave NW          Ocean Shores, WA 98569          (360) 289-3919</p>	<p><b>Westport Timberland Library</b>          101 East Harms Drive          Westport WA 98595          (360) 268-0521</p>
<p><b>Quinault Indian Nation Tribal Library</b>          (Taholah School/ non-public)          PO Box 249          600 Chitwhin          Taholah, WA 98587          (360)276-4729  <a href="http://www.taholah.k12.wa.us">www.taholah.k12.wa.us</a></p>	



# Police Departments

<p>Aberdeen Police Department 210 E Market St Aberdeen, WA 98520 (360) 533-3180</p>	<p>Cosmopolis Police Department 1312 1st St Cosmopolis, WA 98537 (360) 532-9237</p>
<p>Elma Police Department 124 N 3rd St Elma, WA 98541 (360) 482-3131</p>	<p>Grays Harbor County Sheriff 100 W Broadway Ave #3 Montesano, WA 98563 (360) 249-3711</p>
<p>Grays Harbor County Sheriff Substation 2652 WA-109 Ocean City, WA 98569 (360) 289-2447</p>	<p>Hoquiam Police Department 215 10th St Hoquiam, WA 98550 (360) 532-0892</p>
<p>McCleary Police Department 100 S 3rd St McCleary, WA 98557 (360) 495-3107</p>	<p>Montesano Police Department 112 N Main St Montesano, WA 98563 (360) 249-1031</p>
<p>Ocean Shores Police Department 577 Point Brown Ave NW Ocean Shores, WA 98569 (360) 289-3331</p>	<p>Quinalt Indian Nation Police Department 205 Cuitan St Taholah, WA 98587 (360) 276-8211</p>
<p>State Patrol 3111 Pacific Ave Hoquiam, WA 98550 (360) 533-5707</p>	<p>Westport Police Department 740 N Montesano St Westport, WA 98595 (360) 268-9197</p>

# Post Office

115 N 'K' St Aberdeen, WA 98520 (360) 537-7205	4758 State Route 109 Moclips, WA 98562 (360) 276-4503
6094 US Highway 101 Amanda Park, WA 98526 (360) 288-2232	211 W Pioneer Ave Montesano, WA 98563 (360) 249-3322
731 Copalis Beach Rd Copalis Beach, WA 98535 (360) 289-2703	5513 US Highway 101 Neilton, WA 98566 (360) 288-2427
1663 Ocean Beach Rd Copalis Crossing, WA 98550 (360) 289-0252	114 E Pine St Oakville, WA 98568 (360) 273-9321
114 'F' St Cosmopolis, WA 98537 (360) 533-3305	689 Dolphin Ave NE Ocean Shores, WA 98569 (360) 289-3665
204 W Young St Elma, WA 98541 (360) 482-2511	12 Main St Pacific Beach, WA 98571 (360) 276-4473
883 Cranberry Rd Grayland, WA 98547 (360) 267-3712	518 S Shore Rd Quinault, WA 98575 (360) 288-2557
620 8th St Hoquiam, WA 98550 (360) 537-7204	102 S 5th St Satsop, WA 98583 (360) 482-3432
1933 Kirkpatrick Rd Humptulips, WA 98552 (360) 987-2492	142 W Quinault St Taholah, WA 98587 (360) 276-4636
117 S 4th St McCleary, WA 98537 (360) 495-3630	400 W Ocean Ave Westport, WA 98595 (360) 268-9684

# Senior Care and Services

## Adult Protective Services

(877) 734-6277

The purpose of the Home and Community Services (HCS) Division is to promote, develop and provide long-term care services responsive to the needs of persons with disabilities and the elderly with priority attention to low-income individuals.

## Catholic Community Services of Western Washington

(360) 637-8563

[www.ccsww.org](http://www.ccsww.org)

In-home (non-medical) care, volunteer chore assistance and volunteer transportation. Must be over 60 with fixed income and mobility problems, or adults 18-59 with temporary or permanent functional limitations.

## Senior Centers

### **Aberdeen Senior Center**

117 E 3rd Street

Aberdeen, WA 98520

(360) 533-3311

### **Elma Senior Center**

100 W Main Street

Elma, WA 98541

(360) 482-2377

### **Hoquiam Senior Center**

703 Simpson Ave

Hoquiam, WA 98550

(360) 532-5868

### **Montesano Community Center**

314 South Main Street

Montesano, Washington

(360) 249-5374

### **North Beach Senior Center**

885 Ocean Shores Blvd NW

Ocean Shores, WA 98569

(360) 289-2801

### **Westport Senior Center**

114 East Pacific Avenue

Westport, WA 98595

(360) 268-0156

# Transportation

## **Coastal Community Action Program (CCAP)**

1(800)846-5438

<https://www.coastalcap.org/transportation/>

### Medical Transportation (Paratransit)

Transportation is provided to residents of five counties in Western Washington (Grays Harbor, Pacific, Lewis, Mason, Thurston). There are three different transportation programs that serve seniors, low-income residents, the disabled, and elderly who do not drive.

Coastal Community Action Program administers programs offering transportation assistance for reasons including education, medical and workplace transportation.

Transportation is provided to residents of five counties in Western Washington (Grays Harbor, Pacific, Lewis, Mason, Thurston). There are three different transportation programs that serve seniors, low-income residents, the disabled, and elderly who do not drive.

Our specialized transportation is available to all, including senior citizens, people with limited mobility, people using wheelchairs and parents with children with special needs.

Our mission is to provide safe, timely, courteous and personalized transportation services that get you comfortably to and from your destination.

Medicaid Medical Transportation through Paratransit Services is for residents on Medicaid/Provider One.

Methods of transportation include transit fare, fuel or mileage reimbursement, volunteer drivers, shared ride and cabulance (a wheelchair lift-equipped vehicle).

### **Cancer Treatment Transportation**

Cancer Treatment Transportation for anyone unable to reach radiation treatment in Olympia.

Please contact (360) 533-5100 x 124 for more information on this service.

### **Private Medical/Basic Needs Transportation**

Private Medical/Basic Needs Transportation for seniors over age 60 residing in Grays Harbor County who no longer drive due to health or aging issues. All Private Medical/Basic Needs Transportation is provided by volunteers who use their own vehicles. All drivers are trained and qualified before accepting rides.

Please contact (360) 533-5100 x 124 for more information on this service.

**Grays Harbor Transit**

Harbor Place Building  
 343 W Wishkah St  
 Aberdeen, WA 98520  
 (360) 532-2770  
[Ghtransit.com](http://Ghtransit.com)

At Grays Harbor Transit (GHT), people come FIRST. GHT does its best to provide quality services to Grays Harbor and its neighboring County residents.

Grays Harbor Transportation Authority Handicapped Dial A Ride (800) 562-9730 or (360) 532-2770  
 M-F 5-9pm \*Provides county wide public transport for the disabled. Schedule before 4 pm on day before

**Specialized Van Service (SVS)**

Specialized Van Service (SVS) is a public transportation service designed especially for people who are unable to use the regular fixed route bus service due to a disability or condition. SVS is a shared-ride service that provides trips on a reservation basis to areas where Grays Harbor Transit operates regularly scheduled local bus service in Grays Harbor County only. SVS service provides door-to-door service, or, in some instances, transportation to transit centers or bus stops to connect with fixed route bus service.

**Park and Ride lots are available at the following locations:**

- Ocean Shores Station (Chance A la Mer) - No facilities
- Hoquiam Station (7th & J Streets in Hoquiam) - Facilities
- Aberdeen Station (Wishkah & G Streets in Aberdeen) - Facilities, bike lockers
- Westport Park & Ride (Westport "Y") - No facilities
- Elma Station - No facilities
- McCleary Station – Facilities

**General Public Dial-A-Ride**

Grays Harbor Transit has four General Public Dial-A-Rides in small rural areas where bus stops are unavailable for same day service. This service is available to the general public and the Dial-A-Ride vans stay in the city they are designated for. Riders can use this service to get transportation to various locations in their town or bus stops/stations to transfer to a main line bus for transportation outside the service area. The General Public Dial-A-Rides service the following cities:

- *Elma (Route 146) - Monday through Friday 7:45 am to 4:45 pm*
- *Montesano (Route 141) - Monday through Friday 8 am to 4 pm*
- *Ocean Shores (Route 161) - Monday through Friday 8:15 am to 5:15 pm (select the link above for scheduled loops)*
- *Westport (Route 171) now servicing Tokeland - Monday through Friday 7:45 am to 4:45 pm (select the link above for scheduled loops)*

To schedule a ride on one of these services, contact Grays Harbor Transit Dispatch (360) 532-2770 option 3 at least one hour before your desired trip.

**Vanpool**

If the hardest part of your job is getting there and back again, Grays Harbor Transit can help! We offer vanpool services designed to make your commute easier and less expensive. Whether you're interested in joining a vanpool or want to start one yourself, we can help you.

**Connecting Transit Systems**

- Jefferson Transit
- Pacific Transit
- Intercity Transit
- Mason Transit

**Sky Harbor Shuttle**

117 S Maple St  
Aberdeen, WA 98520  
(360) 482-3996 Office 24/7

**Washuttle.com**

**Paratransit**

If you or a loved one is elderly or needs mobility aids, such as a wheelchair and needs a reliable form of transportation, Sky Harbor Shuttle is here to assist you. No matter if you need a ride to a store in the harbor or to visit family in Tacoma, we can get you there.

**Non-emergency Transport**

Do you have a doctor's appointment in Olympia or need to see a specialist in Seattle but do not have a ride? We can pick you up in one of our Non-Emergency Medical Transports and get to your destination safely and on time. No matter if you need to get to a regular doctor's checkup, physical therapy, or get back home from a hospital stay, we're here to assist you.

# Tribal Resources

## Clinics and Treatment Centers

### **Northwest Indian Treatment Center**

P.O. Box 477  
308 E. Young  
Elma, WA 98541  
(360) 482-2674

Using approaches grounded in evidence, experience and a deep understanding of culture, we treat trauma first—this unique approach of addressing historical, systematic, and individual trauma is the center of NWITC’s strength and success. Using culturally adapted best practices, the NWITC provides clinical, cultural, and support services to clients during the 45-day treatment program, intensive recovery support with alumni after treatment, and recovery coach programming in tribal communities. Welcomed, envisioned and collaboratively implemented by tribal leaders who felt the urgent need for such a facility, the NWITC was developed to serve tribal people who have addictions and unresolved grief and trauma in a calming location and supportive environment that is centered on tribal people and culture. At the heart of the NWITC development was immersive, culturally based treatment and intensive content to address the roots of client trauma to help clients reconnect to their identities as Native people and move toward stability and wellness.

### **Roger Saux Health Clinic**

PO Box 219  
1505 Kla-Ook-Wa  
Taholah, WA 98587  
(360) 276-4405 or  
(360) 533-8724

The Roger Saux Health Center opened in September 2006. It was moved approximately 0.5 miles from its previous location within the village of Taholah, Washington, and expanded its physical capacity. Features include 8 operatories, an instrument processing center, a small lab, administrative offices and a reception desk. The service area includes Grays Harbor and Jefferson counties of Washington, although it is not uncommon for individuals to travel greater distances for services. Attending the clinic is a dedicated staff and a cooperative atmosphere.

Health programs include: medical, dental laboratory, pharmacy, sanitation, maternal child health, health benefits, contract health services, WIC, community health representatives, public health nursing, emergency medical service, and nutrition. Other programs in the department are family services, mental health, senior citizens, utilities, and emergency medical services.

## Housing Authority

### **Quinalt Tribal Housing Authority**

209 Spruce St  
Taholah, WA 98587  
(360) 276-4320

## Tribal Services & Contact Information

### **Bureau of Indian Affairs**

1214 Alias Drive  
#C  
Taholah WA 98587  
(360) 276-4850

**Chinook Tribal Center**

3 E Park St  
Bay Center, WA 98527  
(360) 875-6670  
<https://chinooknation.org/>

**Confederated Tribes of the Chehalis**

Chehalis Tribe Administration  
188th Ave. SW  
Rochester, WA  
(360) 273-5911  
[chehalistribe.org](http://chehalistribe.org)

**Chehalis Tribal Head Start Office**

420 Howanut Rd.  
Oakville, WA 98568  
(360) 273-5514

**Nisqually Indian Tribe**

4820 She-Nah-Num Dr  
Olympia, WA 98513  
(360) 456-5221  
[www.nisqually-nsn.gov](http://www.nisqually-nsn.gov)

**NW Indian Treatment Center**

308 E Young St  
PO Box 477  
Elma, WA 98541  
(360) 482-2674 Emergency 24-hr

**Quinault Indian Nation**

1214 Aalis Dr  
PO Box 189  
Taholah, WA 98987  
(360) 276-8215  
888-616-8211  
[www.quinaultindiannation.com](http://www.quinaultindiannation.com)

**The Quinault Indian Nation Emergency Manager**

807 Fifth Ave  
Taholah, WA 985687  
(360)276-8215

**Quinault Indian Nation Police Department**

205 Cuitan St  
Taholah, WA 98587  
(360) 276-8211

**Shoalwater Bay Tribal Center**

2373 Old Tokeland Rd  
Tokeland, WA 98590  
(360) 267-6766  
[www.shoalwaterbay-nsn.gov](http://www.shoalwaterbay-nsn.gov)



**Skokomish Tribal Council**

N 80 Tribal Center Rd  
 Skokomish Nation, WA 98584  
 (360) 426-3990  
[www.skokomish.org](http://www.skokomish.org)

**Squaxin Indian Tribe**

10 SE Squaxin Ln  
 Shelton, WA 98584  
 (360) 426-9781  
[www.squaxinland.org](http://www.squaxinland.org)

**South Puget Intertribal Planning Agency**

3104 SE old Olympic Hwy  
 Shelton, WA 98584  
 (360) 426-3990  
 (800)924-3984  
[www.spipa.org](http://www.spipa.org)

**Library****Quinault Indian Nation Tribal Library**

(Taholah School/ non-public)  
 PO Box 249  
 600 Chitwhin  
 Taholah, WA 98587  
 (360)276-4729  
[www.taholah.k12.wa.us](http://www.taholah.k12.wa.us)

**Food Banks**

Quinault Food Bank  
 31 Burn Road  
 Neilton, WA 98566

Taholah – Mobile Food Bank  
 409 Cummex St (Senior Center)  
 Taholah, WA 98587  
 (360) 532-6315

**WIC Offices**

Chehalis Tribal Health Clinic 21 Niederman Rd Oakville, WA 98568 (360) 462-3224	Quinault Indian Nation 400 8 <sup>th</sup> St Suite A Hoquiam WA 98550 (360) 276-4405
Roger Saux Health Center 1505 Kla-ook-wa Dr Taholah, WA 98587 (360) 276-4405	

**Emergency evacuation and assembly**

Natural Hazards within the Quinault Indian Reservation include many rapidly developing events such as wildfire, earthquake, tsunami, severe weather storms, flooding, and landslides.

The most probable natural hazards include tsunami, wildfire, floods, earthquakes, and severe winter storms bringing high winds and heavy rains. Being prepared for these natural hazards by securing the area around your home and community will help to prevent unnecessary loss of life and structures.

Knowing when to keep roads clear, and when to evacuate the community requires an understanding of Emergency Services Response actions and knowing how you can help.

Tribal emergency management has tried to designate safe assembly areas within a reasonable distance for foot traffic.

If you are at risk from a catastrophe, but do not have an “official” assembly area close by, you are urged to develop a neighborhood evacuation site. The site should be outside hazard areas, easy to get to, and capable of accommodating the number of people expected.

After the immediate danger is past and if there is damage to the degree that you cannot return home, you should attempt to reach a designated assembly area.

All efforts will be made by the Quinault Indian Nation to coordinate with people arriving at these Assembly Areas and to provide assistance as needed.

**Tsa' Alal Village (North Shore entrance to Lake Quinault)**



**The identified Assembly Area for Tsa'alal**  
 The Washington State Department of Transportation  
 ~Amanda Park Maintenance Facility parking lot

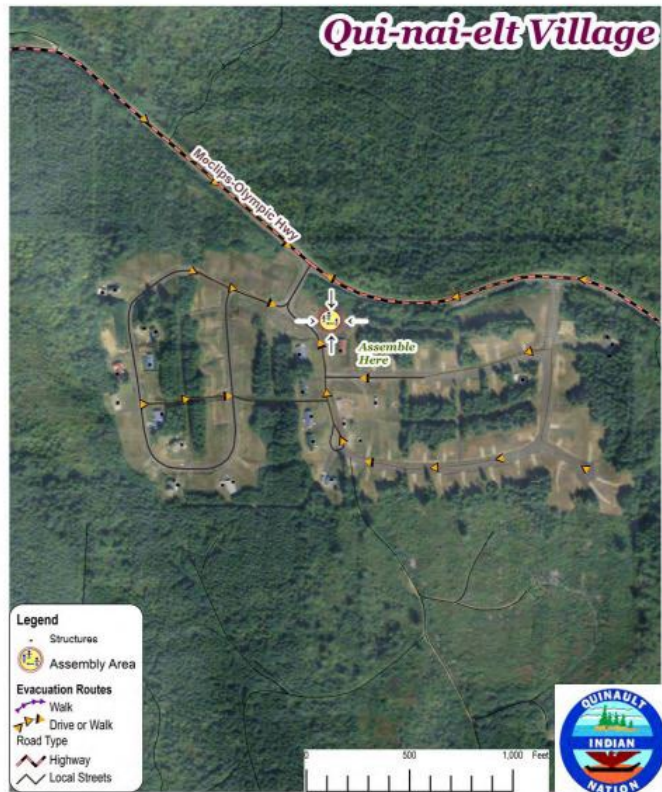
**Amanda Park Village (on Lake Quinault)**

**The identified Assembly Area for Amanda Park**  
 School building parking lot (6130 US-101)



**Qui-nai-elt Village (on the Moclips-Olympic Highway just East of Moclips)**

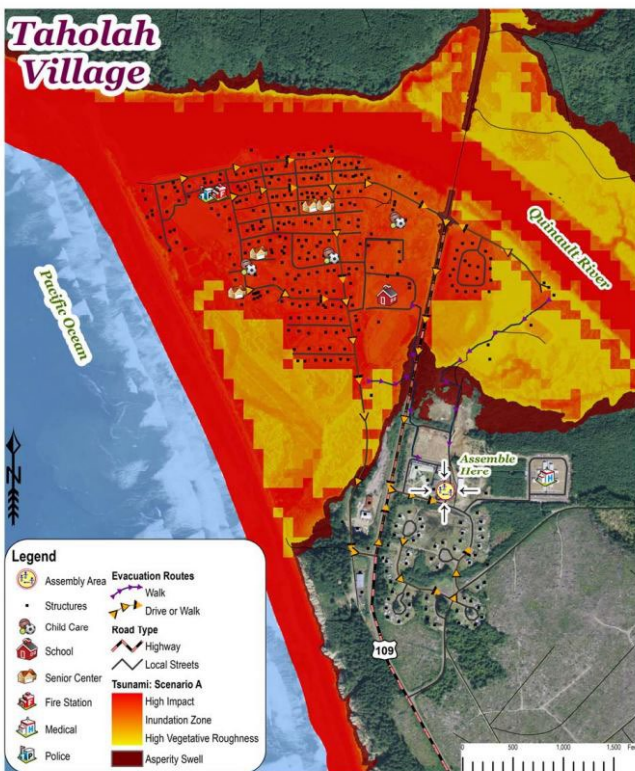
The identified Assembly Area for Qui-nai-elt  
The bus stop at the entrance to the Village



**Taholah**

If you are in Taholah, evacuate to the **Tribal Headquarters (follow the signs)** and locate the Disaster Recovery Center / Assembly Area where staff will coordinate further actions.

*If you are on the beach and unable to get to high ground, go inland as far as you can.*



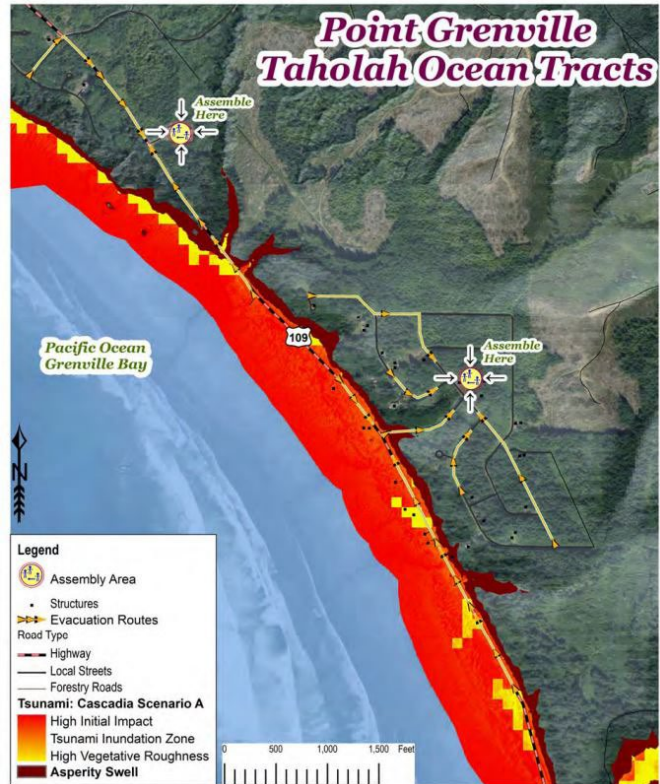
### Point Grenville/ Taholah Ocean Tracts

If you are in the northern areas of Point Grenville, evacuate to the **QDNR facility along SR109 (follow signs)** and locate the Disaster Recovery Center / Assembly Area where staff will coordinate further actions.

If you are in the Taholah Ocean Tracts Community, **go water tower** and coordinate with your neighbors.

*Do not try to access SR109 as much of this route is the tsunami inundation zone and not safe during the*

*If you are on the beach and unable to get to high ground, go inland as far as you can.*



the

to the

within  
event.

# Veterans Services

## **Veterans Advisory Board**

100 West Broadway  
Suite 1  
Montesano, WA 98563

The Grays Harbor County Veterans' Advisory Board was established by Grays Harbor County Resolution 2005-65. The board provides advice to the Grays Harbor County Board of County Commissioners on the needs of local indigent veterans.

## **Veterans of Foreign Wars (VFW)**

The Veterans of Foreign Wars of the United States is a nonprofit veterans service organization comprised of eligible veterans and military service members from the active, guard and reserve forces.

We trace our roots back to 1899 when veterans of the Spanish-American War (1898) and the Philippine Insurrection (1899-1902) founded local organizations to secure rights and benefits for their service. Many arrived home wounded or sick. There was no medical care or veterans' pension for them, and they were left to care for themselves.

In their misery, some of these veterans banded together and formed organizations that would eventually band together and become known as the Veterans of Foreign Wars of the United States. After chapters were formed in Ohio, Colorado and Pennsylvania, the movement quickly gained momentum. Today, membership stands at more than 1.5 million members of the VFW and its Auxiliary.

Our voice was instrumental in establishing the Veterans Administration, development of the national cemetery system, in the fight for compensation for Vietnam vets exposed to Agent Orange and for veterans diagnosed with Gulf War Syndrome. In 2008, we won a long-fought victory with the passing of a GI Bill for the 21st Century, giving expanded educational benefits to America's active duty service members, and members of the guard and reserves, fighting in Iraq and Afghanistan. We were the driving force behind the Veterans Access and Accountability Act of 2014, and continually fight for improved VA medical centers services for women veterans.

Besides helping fund the creation of the Vietnam, Korean War, World War II and Women in Military Service memorials, in 2005 the VFW became the first veterans' organization to contribute to building the new Disabled Veterans for Life Memorial, which opened in November 2010. And in 2015, we became the first supporter of the National Desert Storm War Memorial which is planned for construction at our nation's capital.

We have many programs and services that work to support veterans, service members and their families, as well as communities worldwide.

**VFW Posts**

<b>Post 224 Aberdeen Post</b> 105 E Heron St Aberdeen, WA 98520 United States (360) 533-9863 <i>(NOTE: THIS BUILDING SOLD, INFORMATION NEEDS          UPDATED)</i>	<b>Post 1135</b> PO Box 604 Hoquiam, WA 98550 United States (360) 532-0510
<b>Post 1948</b> PO Box 553 Elma, WA 98541 United States (360) 482-6161	<b>Post 2455</b> 315 S Main St Montesano, WA 98563-4501 United States (360) 249-3631
<b>Post 3057</b> PO Box 1077 Westport, WA 98595-1077 United States (360) 268-9543	<b>Post 5564</b> PO Box 1544 McCleary, WA 98557-1544 United States (360) 470-2387
<b>Post 8956</b> PO BOX 54 OCEAN SHORES, WA 98569 United States (360) 591-7595	

**Veterans' Relief Fund**

The Veterans' Relief Fund may be able to help with rent, utilities, food, and other needs.

This is a fund of last resort and in no way can it be construed as a veteran's benefit.

All applications must be filed with local service officers at veteran support organizations. Please contact your local service officer to discuss making an application.

To apply for assistance from Grays Harbor County Veterans' Relief Fund, you must have been honorably discharged, have been a resident of Grays Harbor County for at least 6 months, and have income below 150% of the Federal Poverty Level.

When contacting service officers, it may be helpful to bring:

- a copy of your DD-214
- proof of residency
- proof of income
- any shut-off or eviction notices requiring payment

### **Veteran Resources**

Thousands of military personnel leave the service each year and select Washington state as their home, bringing with them a wealth of experience and a wide range of skills. Grays Harbor College is honored to have veterans as part of our community.

Washington's two-year colleges are a perfect fit for returning veterans who are transitioning to civilian life and private-sector jobs. Here, at GHC, we offer small class sizes, flexible hours, veterans services, and real-world education and training so veterans can hit the ground running. We offer credit for prior learning, which may be based on transfer credit, test results, portfolios or training certificates. For additional information, please read Getting Veterans Back to Work.

### **Tuition Waivers**

Veterans and dependents of 100% disabled veterans may qualify for tuition waivers. Contact the Veterans Office at (360) 538-4084 for additional information.

### **Overcoming Challenges**

Each veteran brings unique experiences and needs to campus, but some patterns that are common to many have been identified. These are normal challenges for veteran and active-military students. There are steps you can take to help yourself as well as a variety of resources to help you.

### **On-Campus Resources**

#### **Veterans Club**

The Veterans Club meets weekly during fall, winter and spring quarters at 2 p.m. in the Veterans Lounge in the 800 Building. This student run organization is here to provide support and camaraderie for veteran students. It also conducts fundraising activities in order to provide assistance to veteran students and families. The GHC Veterans Club is a chapter of the Student Veterans of America.

**GI Bill®/VA Funding**, Rhonda Riggs, School Certifying Official for the VA. (360) 538-4099.

### **Local Off-Campus Resources**

#### **Dutro Counseling**

Aberdeen, WA

VA contracted service to provide Reintegration Counseling

PTSD/War Trauma Counseling to veterans

Services are free for veterans

**(360) 537-9103**

#### **WA Department of Veterans Affairs**

Olympia Service Center

1(800)562-2308

**[benefits@dva.wa.gov](mailto:benefits@dva.wa.gov)**

Assists veterans with claims processing and referrals. Provides services to veterans including a Basic Health plan, Veterans Conservation Corps, Homeless Veterans Services, and Estate management services.

#### **WorkSource Grays Harbor**

511 W. Heron St.

Aberdeen, WA 98520

**(360) 538-2369 /1(800)783-0657**

Services include Employment Services for Veterans and VA Benefits services.

**(360) 533-9318**



---

**Telephone Numbers Specific to Military Veterans**

**Suicide/Crisis Line for Veterans**1(800)273-8255

**Health Eligibility Center / CHAMPVA**1(800)733-8387

**Income Verification and Means Testing**1(800)929-8387

**Military One Source: Services for active military members**1(800)342-9647

**National Center for Post-traumatic Stress Disorder** 1(844) 698-2311

**Military Retired and Annuity Pay Contact Center**1(800)321-1080

**Veterans Group Life Insurance** 1(800)419-1473

**Gulf War/Agent Orange/Radiation Exposure Helpline**1(800)749-8387

**Vietnam Veterans of America****Vva.org**

James Daly  
415 W Wishkah St  
Aberdeen, WA 98520  
(360) 538-2369

Michael Vance  
953 Trent Ct  
Ocean Shores, WA 98569  
(360) 593-9175

VVA's goals are to promote and support the full range of issues important to Vietnam veterans, to create a new identity for this generation of veterans, and to change public perception of Vietnam veterans. VVA strives to achieve the following:

- Aggressively advocate on issues important to veterans
- Seek full access to quality health care for veterans
- Identify the full range of disabling injuries and illnesses incurred during military service
- Hold government agencies accountable for following laws mandating veterans' health care
- Create a positive public perception of Vietnam veterans
- Seek the fullest possible accounting of America's POWs and MIAs
- Support the next generation of America's war veterans
- Serve our communities

# Youth & Family Recreation Opportunities

## Arts

Aberdeen Art Center

Cosmopolis Art center

## Camps

Camp Bethel  
Camp Juliette  
Shiloh Bible Camp

Camp Bishop  
Ryan Villopoto (RV) Summer Camp

## Clubs

Camp Fire USA  
Sea Scouts

Boy Scouts of America  
Girl Scouts of America

## Museums

Tour the Tall Ship/ Historical Seaport  
Westport Maritime Museum  
International Mermaid Museum  
Cranberry Museum  
Quinalt Cultural Museum

Westport Seabirds Pelagic Tours  
Polson Museum  
Museum of the North beach  
Coastal Interpretive Center

## Sports/ Outdoors

YMCA of Grays Harbor  
Nan-Sea Stables  
Rain Forest Resort Village  
Aberdeen Skate Park  
Bishop Athletic Complex  
North Aberdeen Playfield  
Oakville Baseball Field

Bigfoot Surf School  
Honey Pearl Ranch  
Greater Grays Harbor Youth Works  
Hoquiam Skate Park  
West End Playfield  
Lake Quinalt Trails

## Theater/Acting

Bishop Center for Performing Arts  
Plank City Theater

Driftwood Players  
7<sup>th</sup> street theater

## Parks and Recreation

### Aberdeen

Pioneer Park  
Morrison Riverfront Park  
Stewart Field Ballpark  
Lions Park  
Zelasko Park  
Finch Playfield and Waterpark  
Alder Creek Park  
Garley Park (off leash dog park)  
Hood Park  
McKinley Park  
Skate Park  
International Mermaid Museum

Makarenko Park  
Stewart Memorial Park  
Sam Benn Memorial Park  
Bottle Beach State Park  
Bishop Sports Park  
West End playfield  
Cobain Landing  
Harbig Park  
Lake Aberdeen Recreational area  
North Aberdeen Playfield  
Totem Pole Park  
Johns River Wildlife area (boat launch and trailhead)

### Amanda Park/ Lake Quinault

Lake Quinault  
Quinault Rainforest Trailhead  
Falls Creek South Trailhead  
Big Spruce Trailhead  
Wrights Canyon Trailhead  
Merriman Falls  
North Fork Trailhead  
Kestner Homestead Trail

Willaby Falls Trailhead  
Lake Lane Trailhead  
Quinault Loop Trailhead  
World's Largest Sitka Spruce  
Colonel Bob Trailhead  
Fletcher Canyon Trailhead  
Maple Grove Rain Forest Trail

### Central Park

#### Cosmopolis

Markarenko Park  
Lions Park

Mill Creek Park

#### Copalis

Griffiths-Friday State Park  
Copalis Rock  
Roosevelt Beach (Mocrocks) Access

Ghost Forest  
Copalis Head

### Copalis Crossing

Carlisle Lakes

### Elma

Vance Creek County Park  
Lloyd Murrey Park  
Grays Harbor County Fairgrounds  
Elma Disc Golf  
Shafer State Park

Gladys Smith Park  
Elma Veteran's Memorial Park  
Elma Paintball  
Grays Harbor Raceway

### Grayland

Grayland Beach Oba Sate Park  
Cranberry Museum

Grayland Beach State Park  
Seashore Conservation Area State Park

**Hoquiam**

John Gable Community Park  
 Sonshine Park  
 Hoquiam Skate Park  
 Grays Harbor National Wildlife Refuge  
 Beacon Hill Park  
 Last Spur Park  
 Elton Bennet Park  
 Lincoln Park

Levee Street Boat Launch & Park  
 Olympic Stadium  
 Polson Museum  
 28<sup>th</sup> street Boat launch & Viewing Tower  
 Riverside Dike Park  
 Central Playground  
 Sunset Memorial Park (Cemetery)

**Humptulips**

Failor Lake  
 Hwy 101 Boat Launch

King Salmon Bar  
 Promised Land Recreation Area

**McCleary**

Beerbower Park

Grays Harbor ORV Park

**Moclips**

Moclips State Park  
 Copalis National Wildlife Refuge  
 Haynisisnos Park

Mocrocks Beach  
 Point Greenville

**Montesano**

Friends Landing  
 Sterling Landing  
 Twin Bridges County Park

Kelsey Park  
 Lake Sylvia State Park

**North River Communities**

Shiloh Bible Camp

**Oakville**

Oakville Regional Event Center  
 Capitol Forest

Oakville Baseball Field  
 Chehalis Wildlife Area

**Ocean City**

Washington Parks Ocean City Beach Access

**Ocean Shores**

Ocean Shores Gold Course  
 Ken Peterson Park  
 Damon Park  
 Oyhut Wildlife Recreation Area  
 Spinnaker Park  
 South End Grand Canal Park  
 Bill Ellis Park  
 Skookumchuck Park  
 Emerson Park  
 Oyhut State Park

Ocean Shores Beaches  
 Weatherwax Nature Preserve and Trailhead  
 Perkins Pond and Trailhead  
 North Jetty  
 Quinault Marina  
 Coastal Interpretive Center  
 Chinook city Park  
 Bills Spit  
 North Bay Park  
 Ocean City State Park

**Pacific Beach**

Pacific Beach State Park  
 Museum of the North Beach

Sheahan Trail

**Satsop**

Satsop River Public Boat Launch  
 West Fork Satsop Boat Launch

Cool Trail Boat Dock Creek

**Seabrook**

Crescent Park  
 Orchard Walk Park  
 Mill District Park  
 Lily Walk Park  
 Seabrook Tennis & Pickleball Courts  
 Horseshoe Park  
 Overlook Park

Seabrook playground  
 South Alder Park & Bocce Ball Court  
 Barn Hill Park  
 North Alder Park  
 Beach Camp Park  
 Sunset Amphitheater  
 Seabrook Beach

**Taholah**

Quinault Cultural Museum  
 Park Place Park (located on Park Place but did not see a name)

Veterans Memorial Park

**Westport**

Westport Light State Park  
 Westhaven State Park  
 Westport Viewing Tower  
 Gar Park Baseball Field  
 Shifting Sands Natural Trails  
 Harriet Dorland Municipal Park/ Westport City Park

Westport Seashore Conservation Area  
 Fisherman's Memorial  
 Grays Harbor Lighthouse  
 Twin Harbors State Park  
 Westport Dunes